

# M-750 BATTERY SELECTOR/MASTER DISCONNECT SWITCH



**M-750**



**M-753 with keys**

## Features and Benefits

- 500A intermittent, 310A continuous, 6-36V DC.
- Available with enhanced features such as alternator field disconnect circuit.
- Provides a sure and reliable battery disconnection, protecting against electrical fire, tampering or theft, and battery drain.
- For any vehicle using two batteries, such as boats, emergency and rescue vehicles, trucks, RVs, buses, and utility trucks.



## Specifications

- Vaporproof, water-resistant, dustproof and corrosion resistant.
- Ignition protected: conforms to USCG safety standard Section 183.410.
- UL and CE certified.
- Body diameter 5.00" (127.00mm), mounting flange diameter 6.00" (152.40mm), overall height 2.64" (67.31mm). Three 3/8" - 24 copper studs.
- Functions either with alternators or generators.
- Make before break design permits operation through the On positions with the engine running.

## Web Resources

Download technical resources at:  
[littelfuse.com/M-750](http://littelfuse.com/M-750)

## Ordering Information

MODEL	LOCK	ALTERNATOR FIELD DISCONNECT	PILOT CIRCUIT
M-750			
M-752*		•	
M-753*	•	•	
M-754			•

\*special order

Large knob for easy grip... even when wearing gloves.

Flange for easy flush mounting. Can also mount through a panel.

Heavy spring ensures rock-solid electrical contact and provides strong detent action to the switch.

3/8" - 24 copper studs are solidly machined to the contact plates and cannot come apart.

All-weather hardware: heavy copper studs and brass nuts for maximum current capacity.

**Max Starting Power**  
Delivers maximum starting power: allows either or both batteries to be used. Can be switched between batteries even when the engine is running.

**Impact-Resistant**  
Rugged polyester thermo-plastic case and knob. Stands up to impact, maintains its water-resistant integrity.

**Water-Resistant**  
High-performance synthetic rubber o-ring keeps out water, contaminants and vapors. Many battery switches have no o-ring!

**500 Amp Capacity**  
Solid copper contact plates. Easily handles amperages as high as 500A intermittent. Largest amp capacity for the dollar of any battery switch.

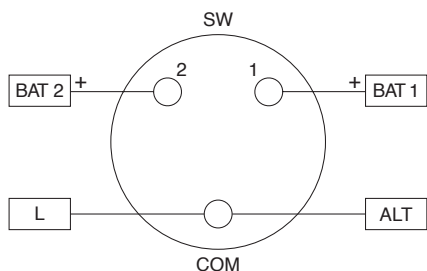
**Corrosion-Proof**  
Stainless steel screws securely hold the plate against the o-ring, and keep the switch watertight.

Datasheet Replaces Hotfeed Number D-598

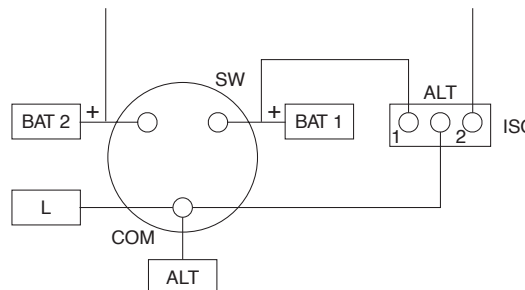
# HM-750 BATTERY SELECTOR/MASTER DISCONNECT SWITCH

## Typical Wiring Diagrams for M-750 & M-751

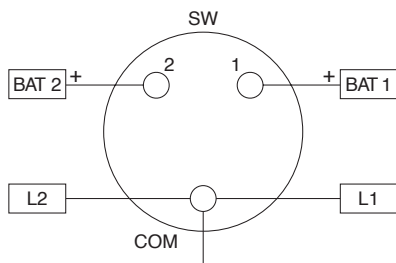
2 Batteries, 1 Switch, 1 Engine, 1 Alternator



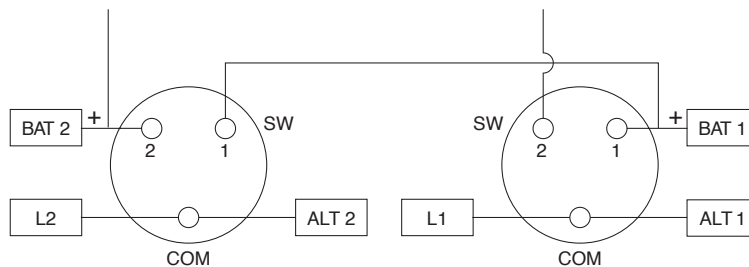
2 Batteries, 1 Switch, 1 Engine, 1 Alternator, with Battery Isolator



2 Batteries, 1 Switch, 1 Engine, 1 Alternator



2 Batteries, 1 Switch, 1 Engine, 1 Alternator



**Key to the diagrams:**

- |                             |                    |                          |
|-----------------------------|--------------------|--------------------------|
| BAT1 = Battery 1 and common | COM = Common       | L1 = Starter No.1 & load |
| BAT2 = Battery 2 and common | SW = Switch        | L2 = Starter No.2 & load |
| ISO = Battery isolator      | L = Starter & load | ALT = Alternator         |

## Mounting

M-750 series switches can be mounted flush or from behind, through a circular hole. When mounted flush, the switch covers over any holes previously made. When mounted from behind, No. 563 self-adhesive plastic sticker is available, which is identical to the ring-shaped sticker already on the switch.

**Surface Mounting**

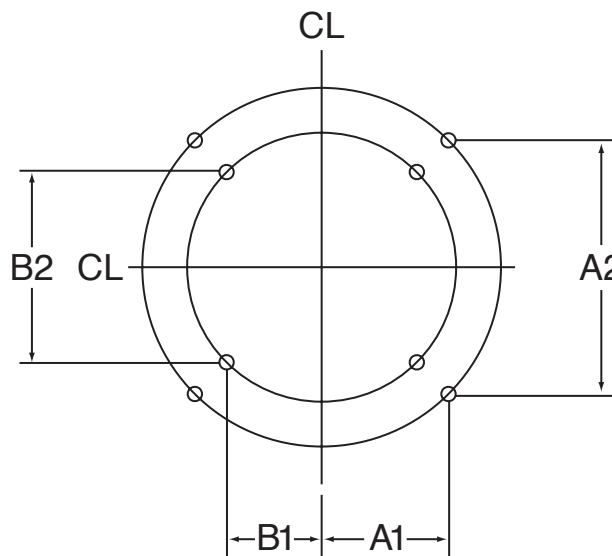
Drill four holes on a 5.500" diameter circle (139.7mm). Hole size 0.218" (5.53mm) diameter will accept No.10 screws.

- A1 = 1.944" (49.38mm)
- A2 = 3.888" (97.78mm)
- CL = Center line

**Through Panel Mounting**

Housing & knob clearance hole 3.312" diameter (84.12mm). Drill four holes on a 4.395" diameter circle (116.63mm). Hole size 0.201" (5.10mm) diameter, 0.5" (12.70mm) deep for 1/4" -20 bolts.

- B1 = 1.553" (39.46mm)
- B2 = 3.107" (78.92mm)
- CL = Center line



Visit [Littelfuse.com](http://Littelfuse.com) for the most up-to-date product information. Littelfuse products are designed for specific applications and should not be used for any purpose (including, without limitation, automotive applications) not expressly set forth in applicable Littelfuse product documentation. Warranties granted by Littelfuse shall be deemed void for products used for any purpose not expressly set forth in applicable Littelfuse product documentation. Littelfuse shall not be liable for any claims or damages arising out of products used in applications not expressly intended by Littelfuse as set forth in applicable Littelfuse product documentation.