

# ComNav<sup>®</sup>



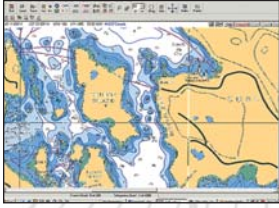
## Mariner X2 Class B AIS Transceiver Automatic Identification System

### Enhanced Safety and Security at Sea

- Safety — See and be seen using your on-board chart plotter
- Display graphically AIS target overlay on standard radars and multifunction chart displays
- Wireless exchange — Navigation status between vessels and shore traffic monitoring centers
- Vessel monitoring of Class A and Class B Transmissions over standard VHF frequencies
- Allows fleet of vessels to be efficiently monitored and port traffic better managed
- Type approvals: FCC, USCG standard in USA, R&TTE Europe, and IC in Canada
- IP67 waterproof enclosure design with marine grade connectors
- Small and rugged, shock and vibration resistant
- Standard NMEA 0183, NMEA 2000<sup>®</sup> and USB interface
- Silent mode — User selectable
- Built-in 50 channel GPS receiver complemented by an integrated GPS antenna
- Four LED status indicators
- Includes Pro AIS2 software for configuration and diagnostics
- Easily upgradeable through PC software via USB
- Meets CE requirements
- 2 year warranty

# MARINER X2

## SYSTEM CONFIGURATION & OPTIONS



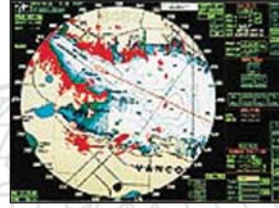
### Safety

AIS improves safety on water through enhanced navigation awareness and reduces search and rescue times.



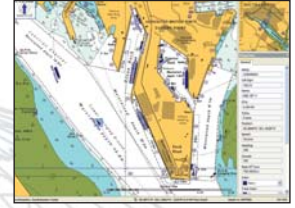
### Security

AIS helps to identify and track vessels and improve border security. Improve coast guard response time by transmitting precise navigation data.



### Vessel Monitoring

AIS enables automatic control and intruder or vessel movement alerts within designated areas.



### Port Vessel Traffic Management

AIS enables port traffic management by using precise tracking and identification data.

### SPECIFICATIONS:

**Power:** 12 to 24 VDC

**Power Consumption:** 150mA @12VDC, <2W average

### CONNECTIONS

**GPS Receiver:** AIS internal  
50 channels

**IEC 61108-1 compliant**

### DATA INTERFACES

**USB**

**NMEA2000®**

**IEC61162-1:** NMEA0183 output, 38400baud

**IEC61162-1:** NMEA0183 input, 4800baud

**Silent mode switch input**

### VHF TRANSCEIVER

**Transmitter x 1 / Receiver x 2**

**Frequency:** 156.025 to 162.025 MHz in 25KHz steps

**Output power:** 2W

**Receiver sensitivity:** <-110dBm @ 20% PER

### USER INTERFACE

**Four LED indicators for power, transmit timeout, error and silent mode**

### ENVIRONMENTAL

**IPx7 rated for water ingress**

**IEC 60945 'Protected' category**

**Operating temperature:** -15°C to +55°C

**COMPLIANCE:** FCC, USCG, R&TTE, IC, RoHs

### Standards and Approvals

IEC62287-1 Edition 2

ITU-R M.1371-4

IEC60945 Edition 4

IEC61162-1/2 Edition 2

IEC61108-1

NMEA2000® Edition 2.20

### Supplied with

2m power and NMEA0183 data cable

1m USB cable

proAIS2 configuration software

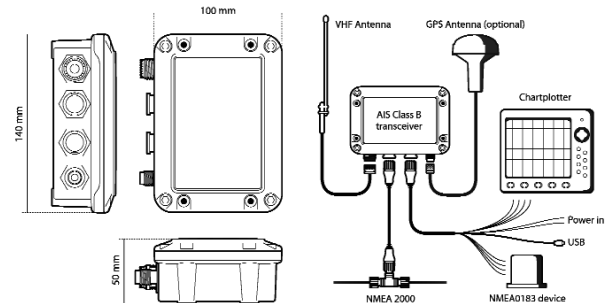
User manual and quick start guide

Fixing screws



**DIMENSIONS:** 140mm x 100mm x 50mm / 5.51" x 3.94" x 1.97"

**WEIGHT:** 280g



### ADDITIONAL FEATURES:

- Supplied with configuration and set up software
- Data display for MMSI, vessel name, call sign, vessel type, etc.
- GPS display of position, COG and SOG
- GPS diagnostics and satellite signal bar chart
- Key status indicators
- Shows Transponder software and firmware version
- Displays receiver and transmitter statistics
- Displays Class A, Class B, base station and A to N target data
- Real time display for serial data output
- Ability to log data to file

# ComNav®



**ComNav Marine Ltd.**

#15-13511 Crestwood Place,  
Richmond, British Columbia • Canada • V6V 2G1

Phone: 604-207-1600 • Fax: 604-207-8008

E-mail: sales@comnav.com

**www.comnav.com**

**Worldwide Service**

Printed in Canada

Represented by:

Specifications subject to change without notice