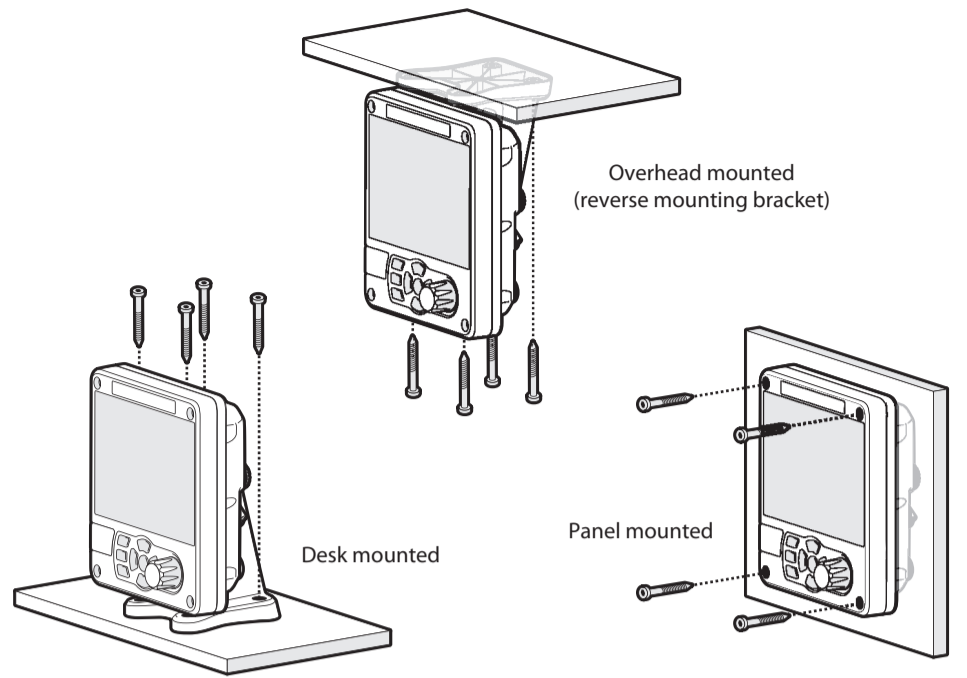


X5 Class A AIS QUICK START GUIDE

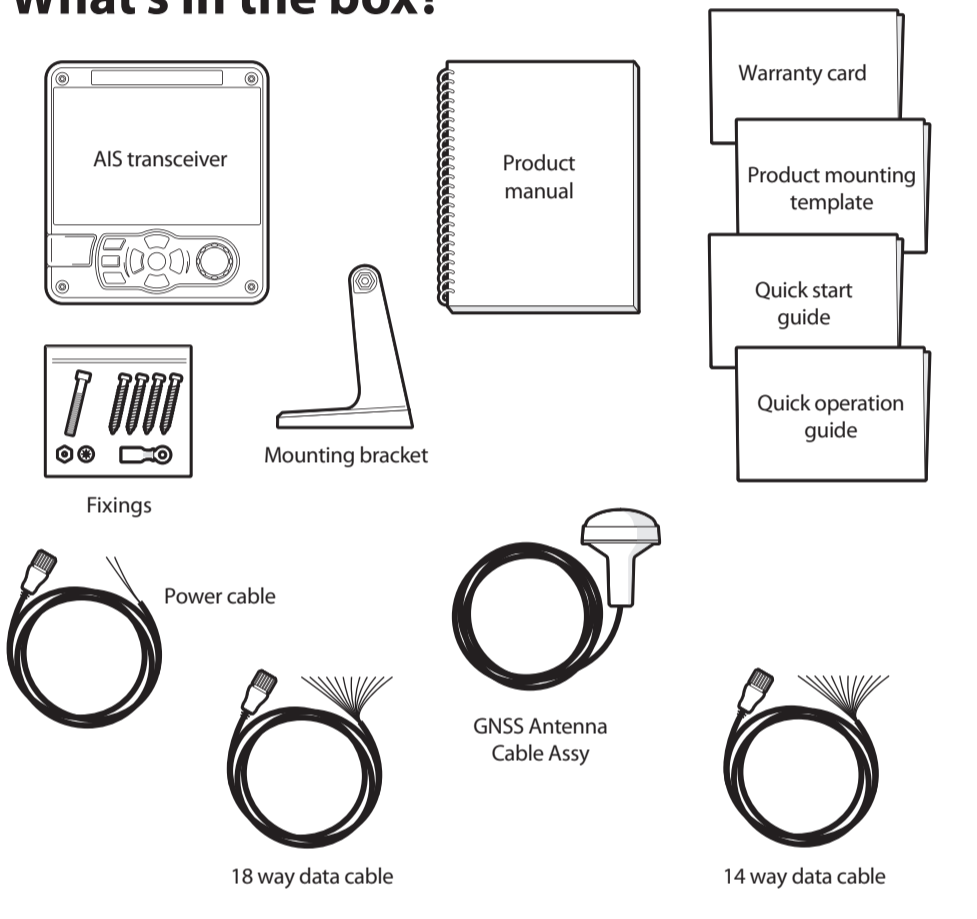


For full instructions on how to install and use your AIS Transceiver please refer to the product manual.

Step 1 – Install the transceiver



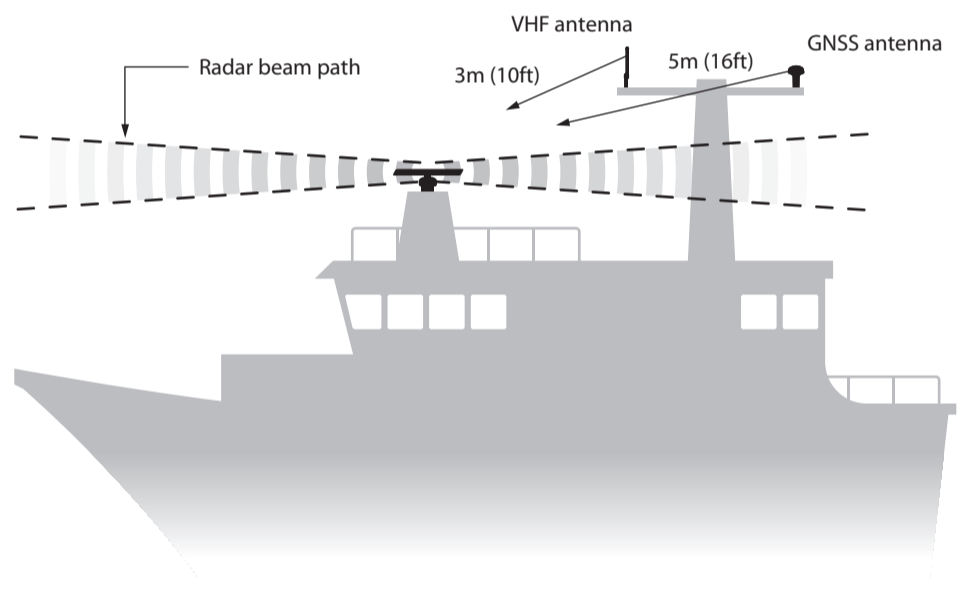
What's in the box?



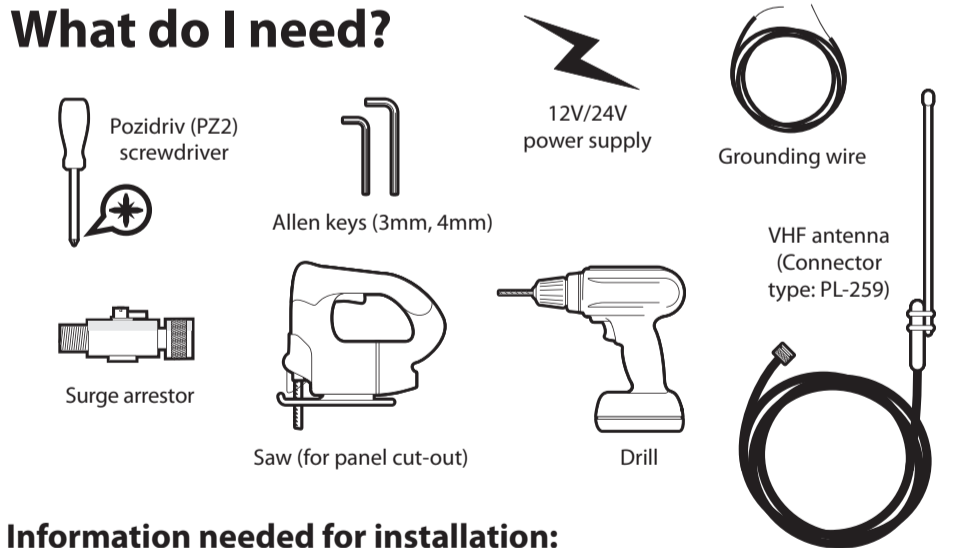
Step 2 – Install the antennas

GNSS antenna should be at least 5m (16ft) from radar or satellite communication antennas. It should also be away from the radar beam path and mounted on a rigid surface.

VHF antenna should be at least 3m (10ft) from other transmitting radio, satellite and radar antennas.



What do I need?



Information needed for installation:

Vessel type: Class A / SOLAS or Inland

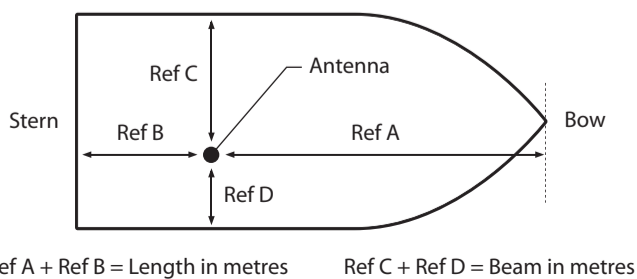
MMSI number (9 digits): _____

Vessel name: _____

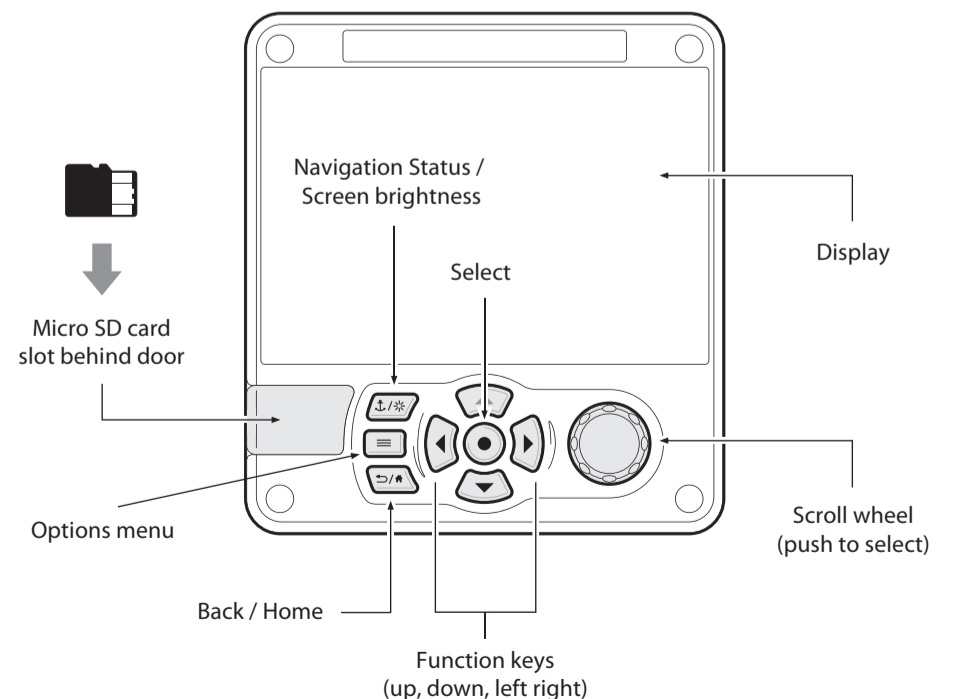
Vessel callsign: _____

IMO number (if available): _____

Vessel dimensions and GNSS antenna position:



Front panel controls



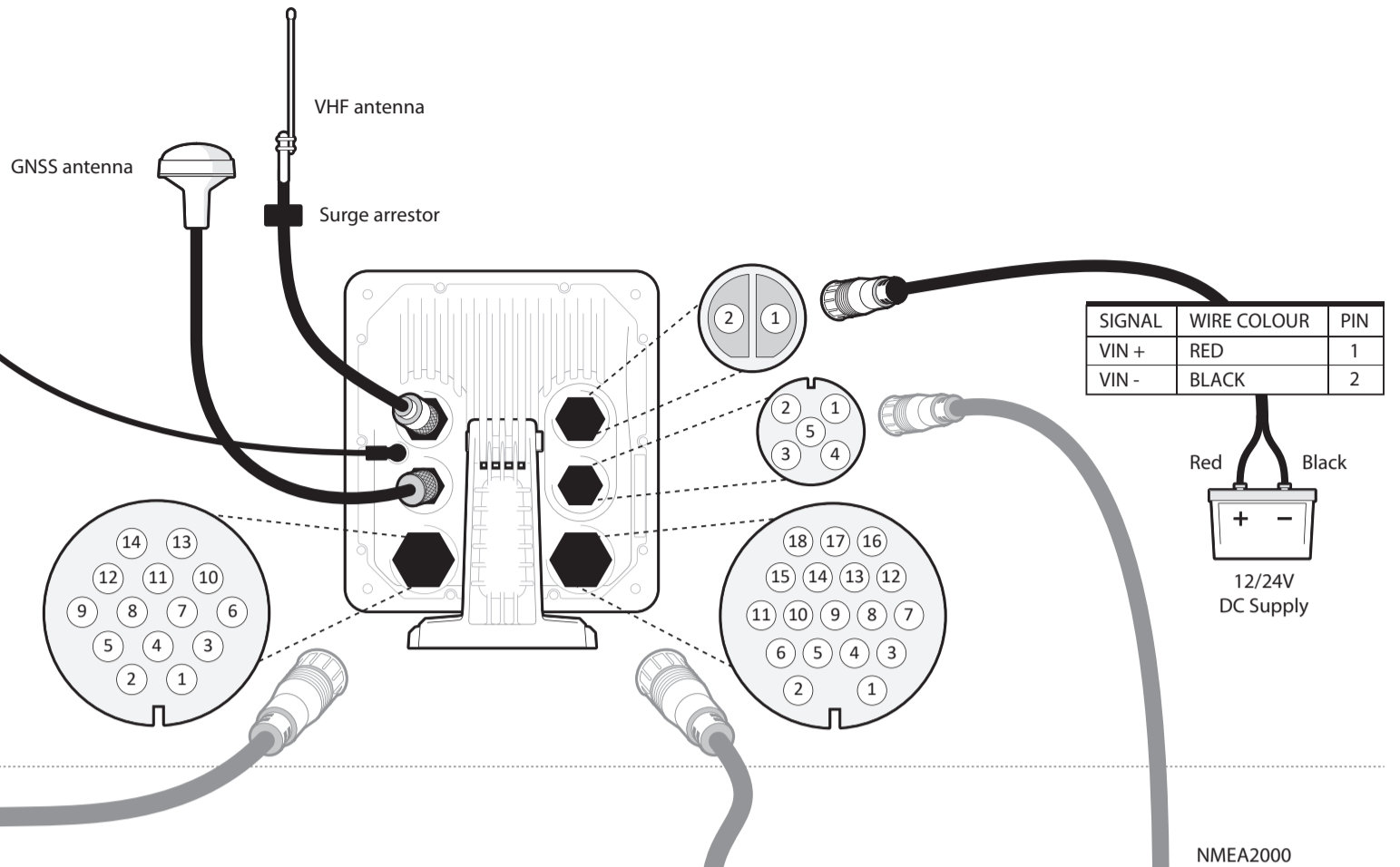
Step 3 – Connecting the transceiver

NOTE: Numbers and tables refer to connector pins on unit



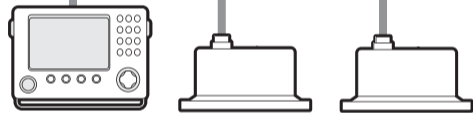
Chassis/GND

This product must be connected to protective earth via the earth connection point. It is essential that the earth connection point is used in all installations, regardless of what other equipment is connected. The earth connection point must be bonded to protective earth using as short a connection as possible.



Optional connections

SIGNAL	WIRE COLOUR	PIN
BLUE SIGN N	BLACK	1
BLUE SIGN P	BROWN	3
SILENT N	BLUE	6
SILENT P	RED	7
SENSOR 1 RX B	ORANGE	2
SENSOR 1 RX A	PURPLE	5
SENSOR 1 COM	GREEN	8
SENSOR 2 RX B	WHITE	9
SENSOR 2 RX A	WHITE/BLACK	12
SENSOR 2 COM	GREY	11
SENSOR 3 RX B	YELLOW	14
SENSOR 3 RX A	RED/BLACK	13
SENSOR 3 COM	PINK	10
CHASSIS	DRAIN WIRE	4



Ship's sensor data (DGPS, GYRO, Heading)

SIGNAL	WIRE COLOUR	PIN
LR DGPS TX B	ORANGE	3
LR DGPS TX A	BROWN	4
LR DGPS RX B	PURPLE	7
LR DGPS RX A	BLUE	8
LR DGPS COM	BLACK	1
PILOT TX B	RED	2
PILOT TX A	RED/WHITE	5
PILOT RX B	PINK	6
PILOT RX A	YELLOW	10
PILOT COM	GREEN	11
ALARM NC	GREY	16
ALARM COM	WHITE	12
EXT DISPLAY TX B	ORANGE/WHITE	13
EXT DISPLAY TX A	BLACK/WHITE	17
EXT DISPLAY RX B	BROWN/WHITE	14
EXT DISPLAY RX A	YELLOW/WHITE	18
EXT DISPLAY COM	GREEN/WHITE	15
CHASSIS	DRAIN WIRE	9

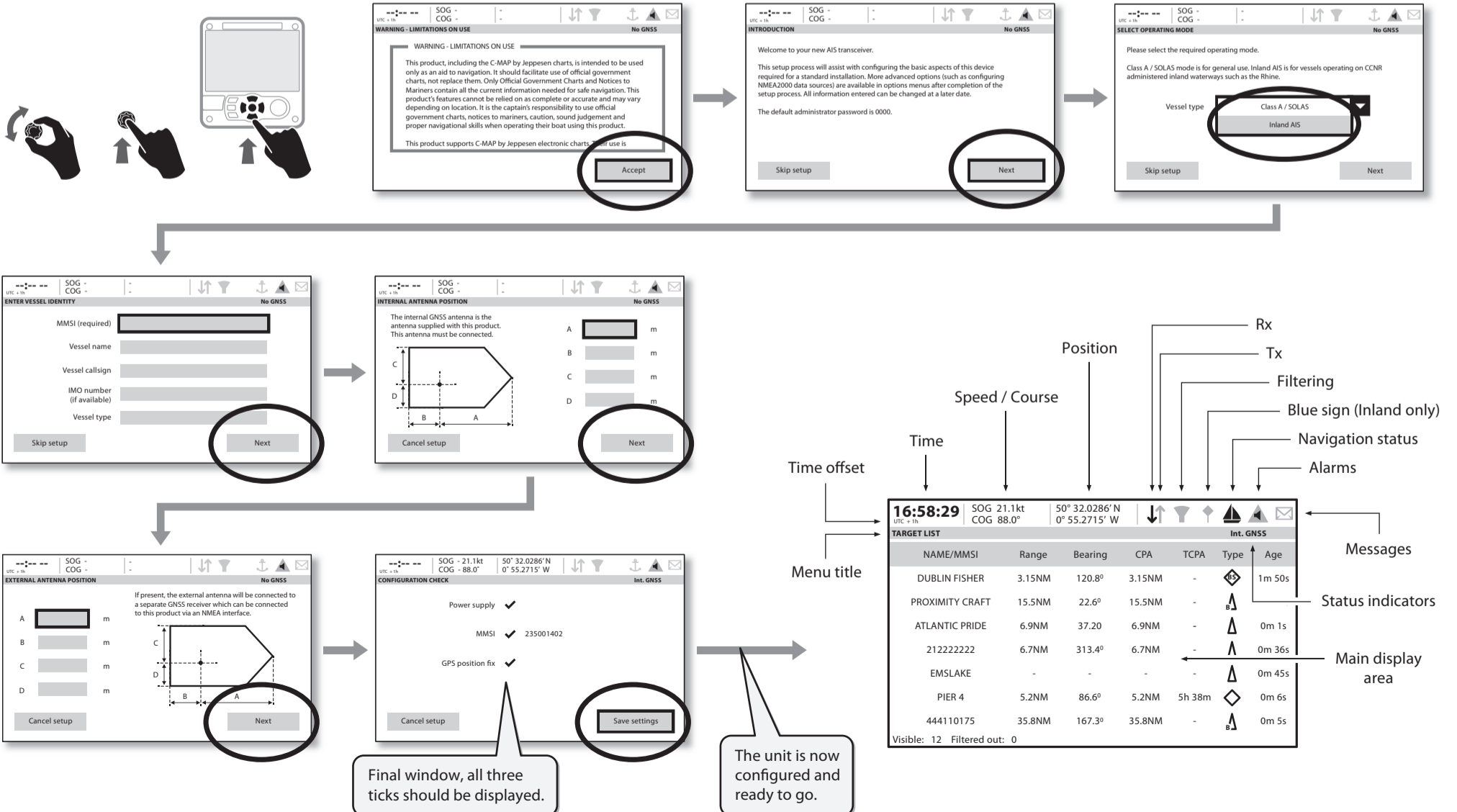


Displays (ECDIS, Radar)

SIGNAL	PIN
N2K_NET_SHIELD	1
N2K_NET_S	2
N2K_NET_C	3
N2K_NET_H	4
N2K_NET_L	5

An optional junction box is available to assist with wiring to sensors and displays

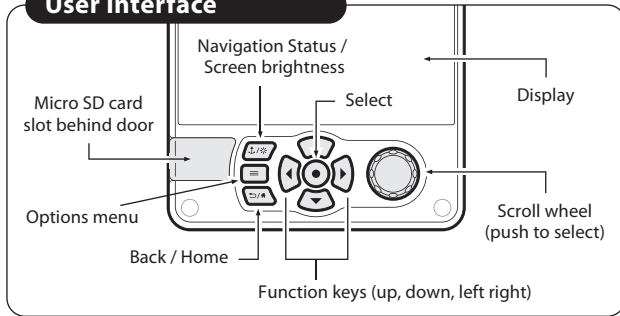
Step 4 – Quick start sequence



Final window, all three ticks should be displayed.

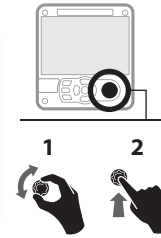
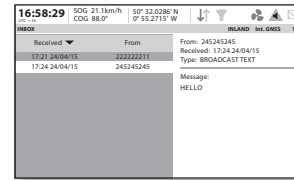
The unit is now configured and ready to go.

User interface



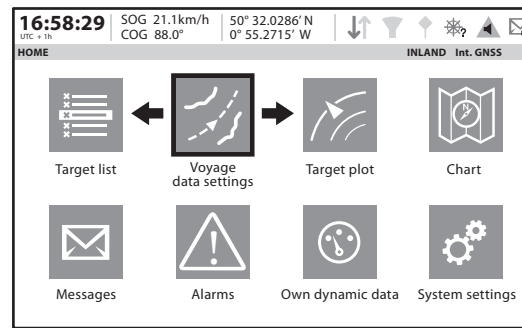
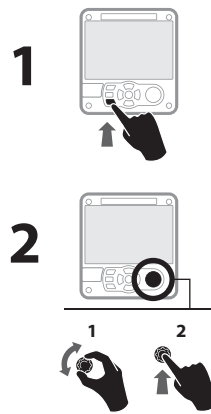
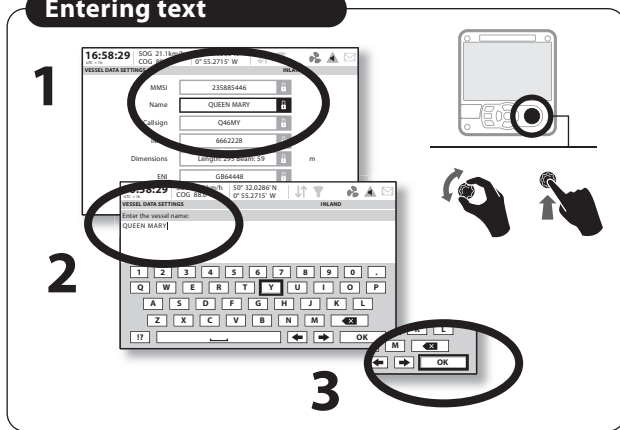
Messages

Receipt of AIS text and safety related messages is indicated by the presence of the message icon in the status bar showing the number of unread messages.



Messages can be viewed by opening the 'Inbox' under the 'Messages' menu option.

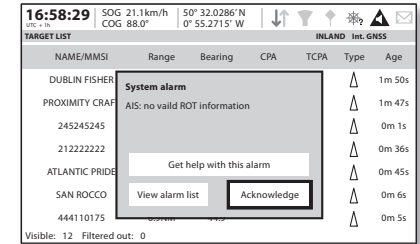
Entering text



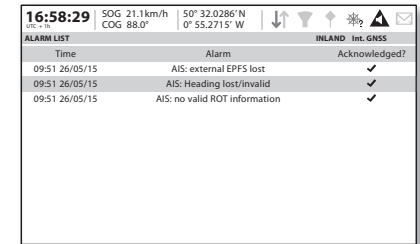
System alarms

Active system alarms are indicated by the presence of the red alarm icon in the status bar.

New alarms are highlighted by the display of an alarm popup.



The list of current active alarms can be viewed on the 'Alarms' screen.



Voyage data

The 'Voyage data settings' screen provides quick access to the most frequently changed inland AIS parameters.

On this screen you can set the following parameters:

- Navigation status.
- Destination of voyage.
- ETA – Estimate the date and time of arrival at the destination in UTC time.
- Static Draught – Enter the maximum draught for your vessel in metres (e.g. 4.96m).
- The cargo status of the vessel as 'Loaded' or 'Unloaded'.
- The number of blue cones and blue flag status for the cargo.
- The number of crew members on board (255 = unknown).
- The number of passengers on board (8191 = unknown).
- The number of other personnel on board (255 = unknown).

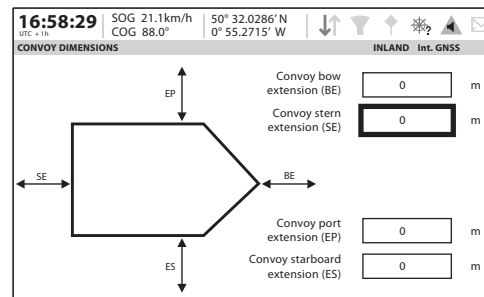
Vessel and convoy type

Entering the ERI ship type:

In the 'Home' -> 'System settings' -> 'Vessel data settings' screen select the ERI setting that best describes the vessel and convoy.

In the 'Home' -> 'Voyage data settings' screen select 'Convoy dimensions' -

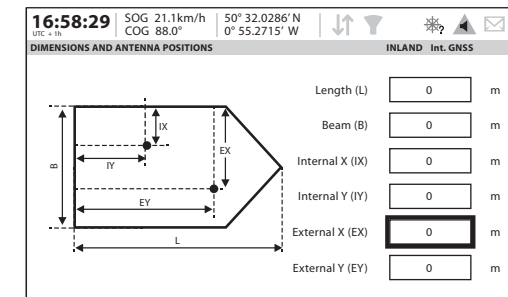
Select each data field in turn and enter the extension beyond the normal vessel size of any convoy attached.



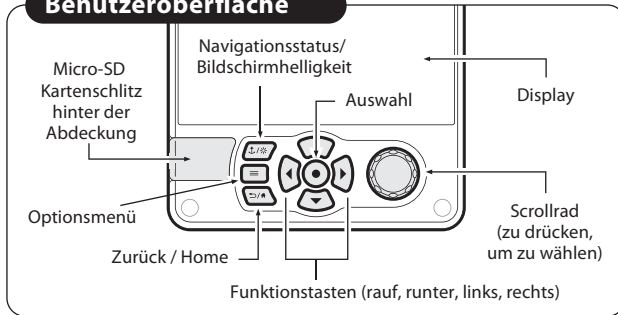
Vessel data

Dimensions for the vessel (not including any attached convoy) must be entered as well as the position of any GNSS antennas:

- Navigate to 'System settings' then 'Vessel data settings'
- Select 'Dimensions'
- Enter the password
- Select each data field in turn and enter the required dimension to the nearest 0.1m



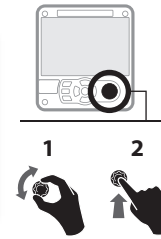
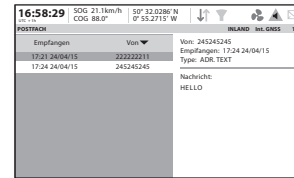
Benutzeroberfläche



Nachrichten

Der Eingang von AIS-Texten und sicherheitsrelevanten Nachrichten wird durch ein Nachrichtensymbol in der Statusleiste gemeldet und zeigt die Anzahl der ungelesenen Nachrichten an.

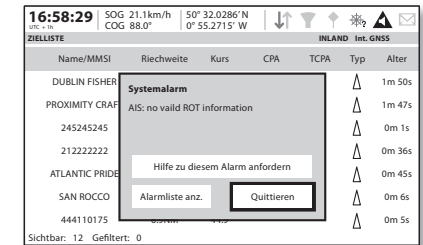
Nachrichten können gelesen werden, indem der 'Meldungseingang' unter der Menüoption 'Nachrichten' geöffnet wird.



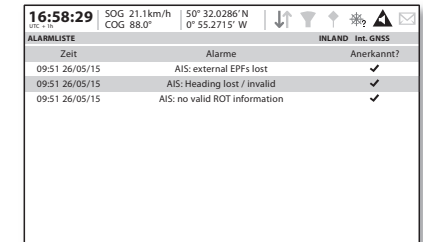
Systemalarme

Aktive Systemalarme werden durch ein rotes Alarmsymbol in der Statusleiste angezeigt.

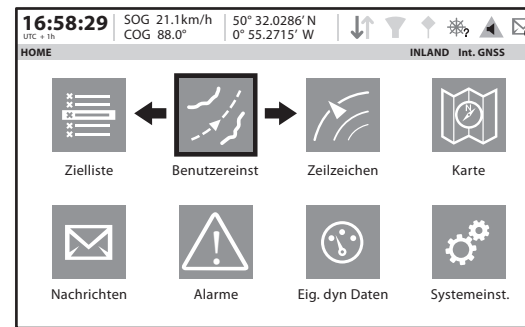
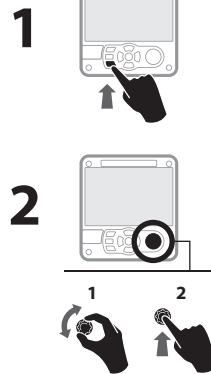
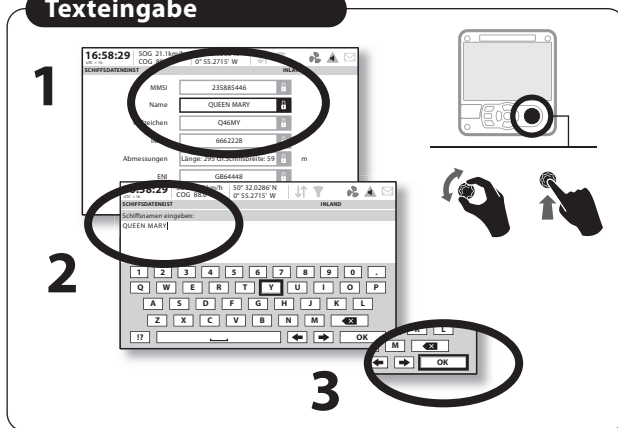
Neue Alarme werden im Display durch ein erscheinendes Alarm-Popup hervorgehoben.



Die Liste der aktuell aktiven Alarme kann im 'Alarme' Bildschirm eingesehen werden.



Texteingabe



Reisendaten

Der Bildschirm 'Reisendaten-Einstellungen' erlaubt einen schnellen Zugriff auf die am häufigsten geänderten Inland-AIS Parameter.

In diesem Bildschirm können Sie die folgenden Parameter einstellen:

- Navigationsstatus
- Ziel der Reise.
- ETA – Schätzung von Datum und Zeit der Ankunft am Ziel in UTC-Zeit.
- Statischer Tiefgang – Eingabe des maximalen Tiefgangs für Ihr Schiff in Metern (z.B. 4,96m).
- Der Frachtstatus des Schiffs als 'Beladen' oder 'Unbeladen'.
- Die Anzahl an Blauen Kegeln und der Blaue-Flagge-Status für die Fracht.
- Die Anzahl an Besatzungsmitgliedern an Bord (255 = unbekannt).
- Die Anzahl an Passagieren an Bord (8191 = unbekannt).
- Die Anzahl an anderem Personal an Bord (255 = unbekannt).

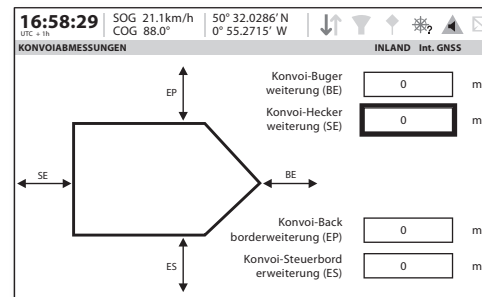
Schiffs- und Verbandstyp

Eingabe des schiffs- oder Verbandstypes (ERI Schiffstyp):

Der AIS Schiffs- oder Verbandstyp soll auf den zutreffenden Schiffs- oder Verbandstyp gesetzt werden. Dies trifft im Wesentlichen bei Änderungen eines Verbandes zu.

Im Fenster Menu -> 'Schiffsdaten-Einstellungen' den aktuellen Schiffs- oder Verbandstyp auswählen.

In den 'Reisendaten-inst.' Bildschirm wählen Konvoi Dimensionen - geben Sie die Verlängerung über das normale Gefäßgröße jeder Konvoi angebracht.



Schiffsdaten

Die Abmessungen des Schiffs (exklusive eines angefügten Konvois) sowie die Position von allen GNSS-Antennen müssen eingegeben werden:

- Gehen Sie unter 'Systemeinstellungen' auf 'Schiffsdaten-Einstellungen'
- Wählen Sie 'Abmessungen'
- Geben Sie das Passwort ein
- Wählen Sie nach und nach jedes Datenfeld aus und geben Sie die erforderlichen Abmessungen auf 0,1m genau ein

