

# GARMIN NAVIONICS+™ AND GARMIN NAVIONICS VISION+™ CARTOGRAPHY

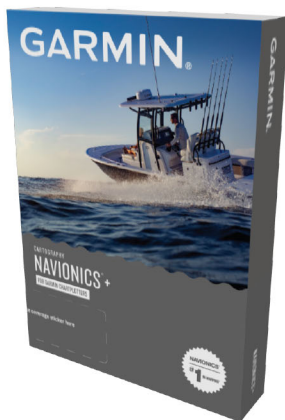


## PRODUCT OVERVIEW:

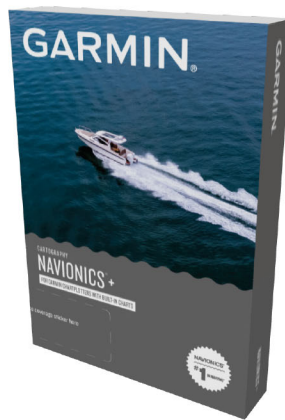
You've never seen Garmin cartography like this before. Introducing the next generation of cartography for Garmin marine devices. Our standard Garmin Navionics+ and premium Garmin Navionics Vision+ products offer the following:

- Integrated coastal and inland chart content
- One-year subscription to daily updates
- New color palette for a Navionics® style appearance
- Advanced Auto Guidance+™ technology<sup>1</sup>, which offers faster route calculation times and improved routing detail over Auto Guidance technology
- Simplified coverage areas and pricing and more

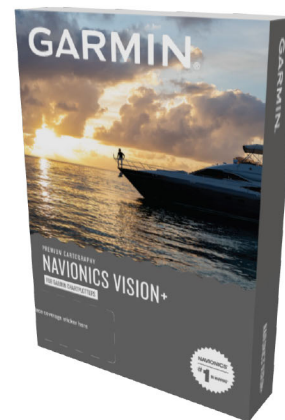
Navigate with greater peace of mind and increased awareness with the No. 1 source of mapping<sup>2</sup> for your marine device. With Navionics cartography from Garmin, you can count on the name you know — even in the places you don't. Choose the standard product, or go premium for more features. They all include a one-year subscription with daily updates, so you can be sure to have our latest cartography when you're fishing or cruising.



Garmin Navionics+



Garmin Navionics+  
Built-in Chart Update



Garmin Navionics Vision+

<sup>1</sup>Auto Guidance+ technology is for planning purposes only and does not replace safe navigation operations

<sup>2</sup>Based on 2020 reported sales

# GARMIN NAVIONICS+™ AND GARMIN NAVIONICS VISION+™ CARTOGRAPHY

## GARMIN NAVIONICS+

Plot your paradise — with the best, most up-to-date Garmin Navionics+ marine cartography on your compatible Garmin chartplotter. For offshore or inland waters, this all-in-one solution offers detail-rich integrated mapping of coastal features, lakes, rivers and more. It features shaded depth contours, advanced Auto Guidance+™ technology<sup>1</sup> and access to daily updates via the ActiveCaptain® app for the freshest chart data every time out. Combining the best features of Garmin and Navionics® automatic routing solutions, Auto Guidance+ gives the boater a suggested dock-to-dock path to follow through channels, inlets, marina entrances and more. Multiple shading options aid in shallow water navigation and make it easy to select depth ranges for the best fishing spots. Downloadable NOAA raster imagery is also available for those who want the familiar look of paper charts.

## GARMIN NAVIONICS+ KEY FEATURES:

<b>NEW</b>	<b>INTEGRATED CONTENT</b>	Integrated Garmin and Navionics content for coastal and inland waters — with an updated color palette and Navionics style appearance — provides exceptional coverage, clarity and detail.
<b>NEW</b>	<b>DAILY UPDATES</b>	A one-year subscription that includes easy access to daily chart updates is available via the ActiveCaptain smart-device app.
<b>NEW</b>	<b>AUTO GUIDANCE+</b>	Built-in Auto Guidance+ technology <sup>1</sup> uses your desired depth and overhead clearance, along with chart data and frequently traveled routes, to calculate a suggested path to follow from dock to dock.
	<b>RASTER CARTOGRAPHY</b>	NoAA raster cartography is available as a free downloadable feature via the ActiveCaptain app.
<b>IMPROVED</b>	<b>DEPTH RANGE SHADING</b>	Depth range shading lets you select up to 10 color-shaded options and view your target depths at a glance.
	<b>UP TO 1' CONTOURS</b>	For improved fishing and navigation, up to 1' contours provide a more detailed depiction of bottom structure.
	<b>SHALLOW WATER SHADING</b>	To aid in navigation, the shallow water shading feature highlights depths up to a user-defined level.
	<b>ACTIVECAPTAIN COMMUNITY</b>	ActiveCaptain community content provides valuable POIs, recommendations and advice from boaters with firsthand experience of the local environment.

Customers who own compatible chartplotters with built-in BlueChart® g3 or LakeVü™ g3 cartography can purchase a card to upgrade to Garmin Navionics+ cartography.

<sup>1</sup>Auto Guidance+ is for planning purposes only and does not replace safe navigation operations

# GARMIN NAVIONICS+™ AND GARMIN NAVIONICS VISION+™ CARTOGRAPHY

## GARMIN NAVIONICS VISION+

Plot your paradise — with the best, most up-to-date Garmin Navionics Vision+ premium marine cartography. For offshore or inland waters, this all-in-one solution offers premier-grade chart features, including detail-rich integrated mapping of coastal features, lakes, rivers and more. It features high-resolution relief shading, 3D views, satellite imagery, advanced Auto Guidance+™ technology<sup>1</sup> and access to daily updates via the ActiveCaptain® app for the freshest chart data every time out. Combining the best features of Garmin and Navionics® automatic routing solutions, Auto Guidance+ gives the boater a suggested dock-to-dock path to follow through channels, inlets, marina entrances and more. Multiple shading options aid in shallow water navigation and make it easy to select depth ranges for the best fishing spots.

## GARMIN NAVIONICS VISION+ KEY FEATURES:

<b>NEW</b>	<b>INTEGRATED CONTENT</b>	Integrated Garmin and Navionics content — with an updated color palette and Navionics style appearance — provides — exceptional coverage, clarity and detail.
<b>NEW</b>	<b>DAILY UPDATES</b>	A one-year subscription that includes easy access to daily chart updates is available via the ActiveCaptain smart-device app.
<b>NEW</b>	<b>AUTO GUIDANCE+</b>	Built-in Auto Guidance+ technology <sup>1</sup> uses your desired depth and overhead clearance, along with chart data and frequently traveled routes, to calculate a suggested path to follow from dock to dock.
	<b>UP TO 1' CONTOURS</b>	For improved fishing and navigation, up to 1' contours provide a more detailed depiction of bottom structure.
	<b>HIGH RESOLUTION RELIEF SHADING</b>	The high-resolution relief shading feature combines color and shadow to give you an easy-to-interpret, clearer view of bottom structure than contour lines alone.
<b>IMPROVED</b>	<b>HIGH-RESOLUTION SATELLITE IMAGERY</b>	High-resolution satellite imagery overlaid with navigational charts gives you a realistic view of your surroundings — ideal for entering unfamiliar harbors or ports.
<b>IMPROVED</b>	<b>AERIAL PHOTOGRAPHY</b>	Aerial photography of ports, bridges, docks, navigational landmarks and more provides a better sense of your surroundings above the waterline.
	<b>SIDE SCAN IMAGES</b>	Side scan images capture submerged features, such as fallen timber, fish attractors, wrecks, potential hazards and more, on select U.S. lakes.
	<b>SONAR IMAGERY</b>	Sonar imagery reveals bottom hardness clearly and in contrasting color, highlighting both subtle and dramatic transition areas on select U.S. lakes.
<b>IMPROVED</b>	<b>3D VIEWS</b>	Unique 3D views, such as MarinerEye and FishEye, provide additional perspective both above and below the waterline.
	<b>RASTER CARTOGRAPHY</b>	NOAA raster cartography is available as a free downloadable feature via the ActiveCaptain app.
<b>IMPROVED</b>	<b>DEPTH RANGE SHADING</b>	Depth range shading lets you select up to 10 color-shaded options and view your target depths at a glance.
	<b>SHALLOW WATER SHADING</b>	To aid in navigation, the shallow water shading feature highlights depths up to a user-defined level.
	<b>ACTIVECAPTAIN COMMUNITY</b>	ActiveCaptain community content provides valuable POIs, recommendations and advice from boaters with firsthand experience of the local environment.

<sup>1</sup>Auto Guidance+ is for planning purposes only and does not replace safe navigation operations

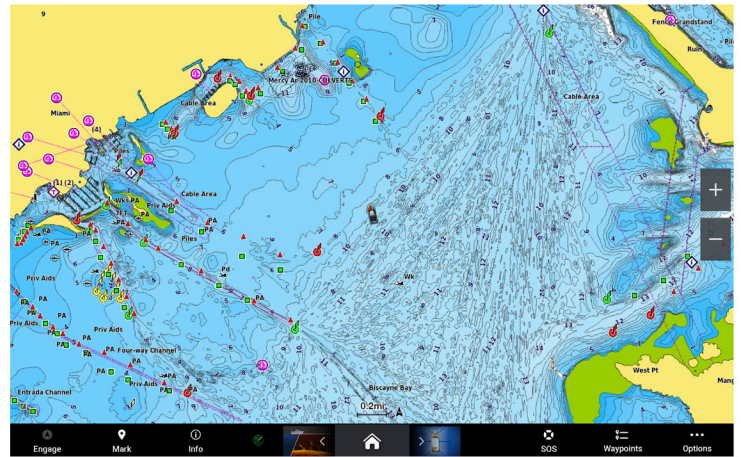
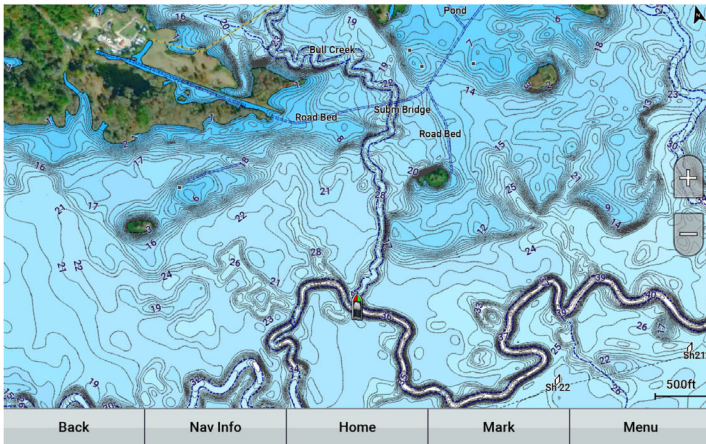
# GARMIN NAVIONICS+™ AND GARMIN NAVIONICS VISION+™ CARTOGRAPHY

## DAILY UPDATES

Charts are constantly being enhanced with new and amended content — as many as 5,000 updates are made every day. Your one-year subscription includes access to daily chart updates via the ActiveCaptain® app.

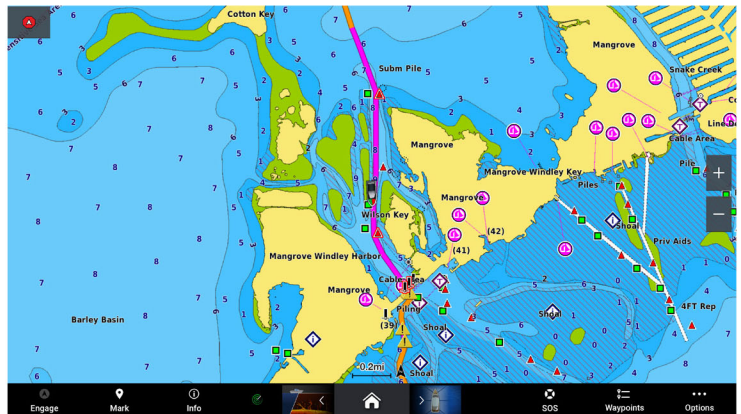
## ALL-IN-ONE MAP SOLUTION FOR GARMIN CHARTPLOTTERS

Access detail-rich mapping of coastal features, lakes, rivers and more. Integrated Garmin and Navionics® content offers coverage for boaters worldwide.



## AUTO GUIDANCE+™ TECHNOLOGY

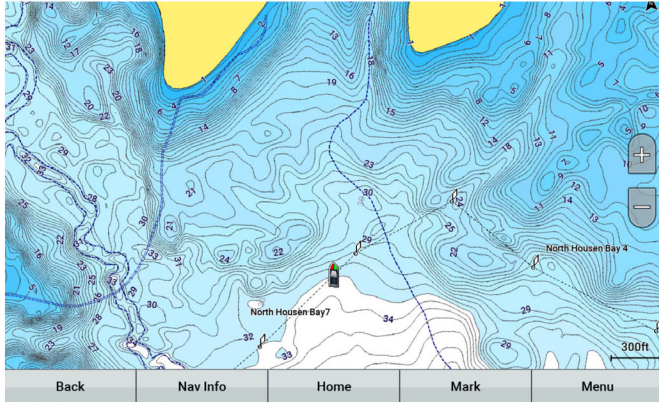
Combining the best of Garmin and Navionics automatic routing features, built-in Auto Guidance+ technology<sup>1</sup> gives you a suggested dock-to-dock path to follow through channels, inlets, marina entrances and more.



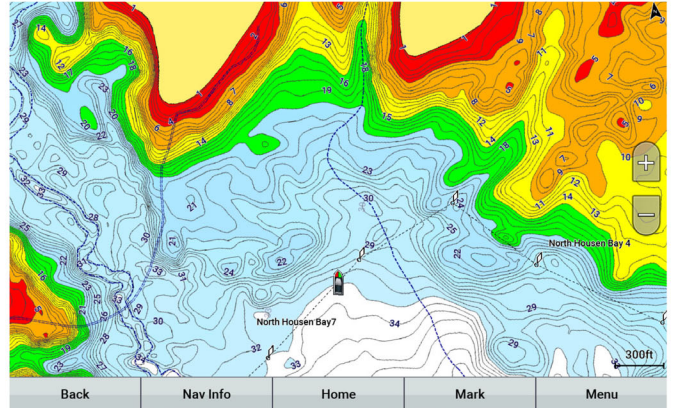
<sup>1</sup>Auto Guidance+ is for planning purposes only and does not replace safe navigation operations

# GARMIN NAVIONICS+™ AND GARMIN NAVIONICS VISION+™ CARTOGRAPHY

## UP TO 1' CONTOURS



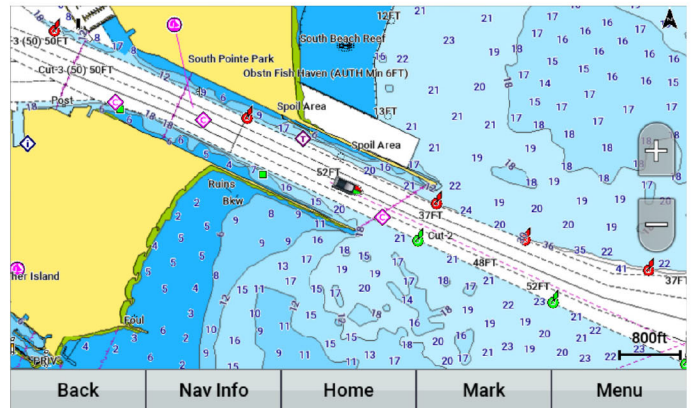
## DEPTH RANGE SHADING



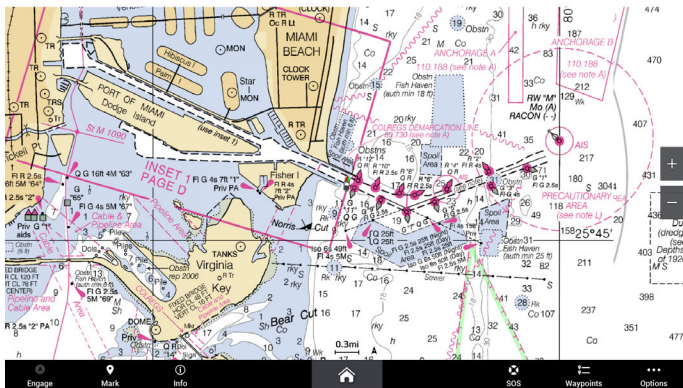
## ACTIVECAPTAIN® COMMUNITY



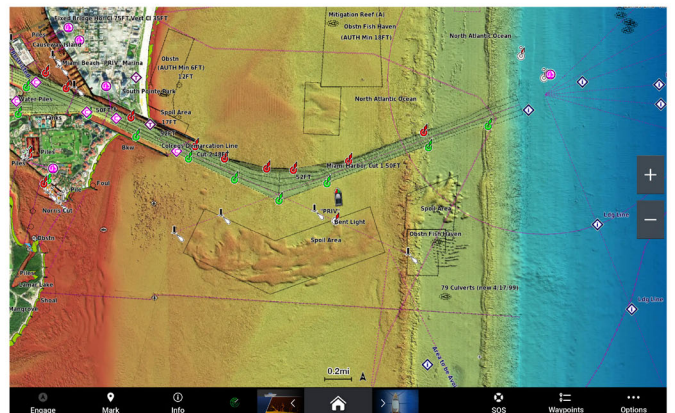
## SHALLOW WATER SHADING



## RASTER CARTOGRAPHY

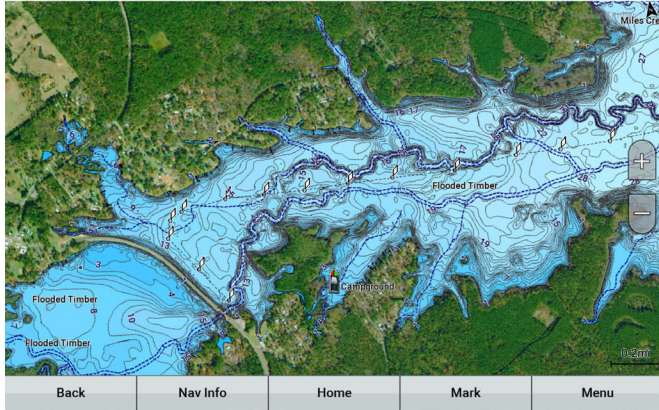


## HIGH-RESOLUTION RELIEF SHADING

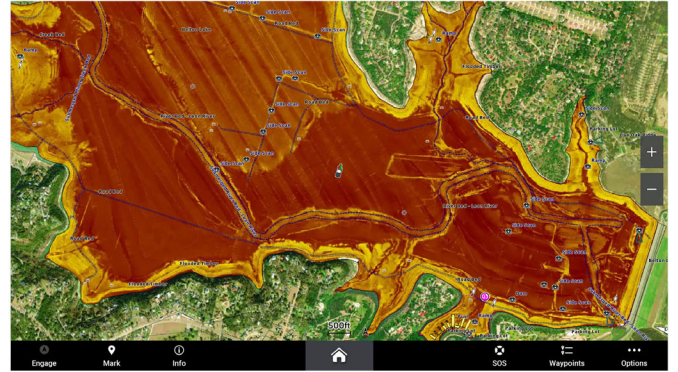


# GARMIN NAVIONICS+™ AND GARMIN NAVIONICS VISION+™ CARTOGRAPHY

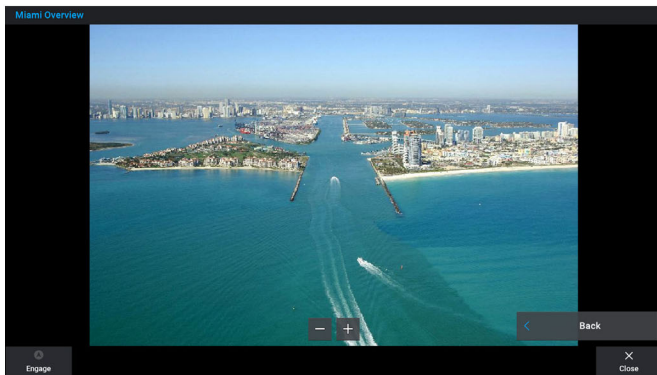
## HIGH-RESOLUTION SATELLITE IMAGERY



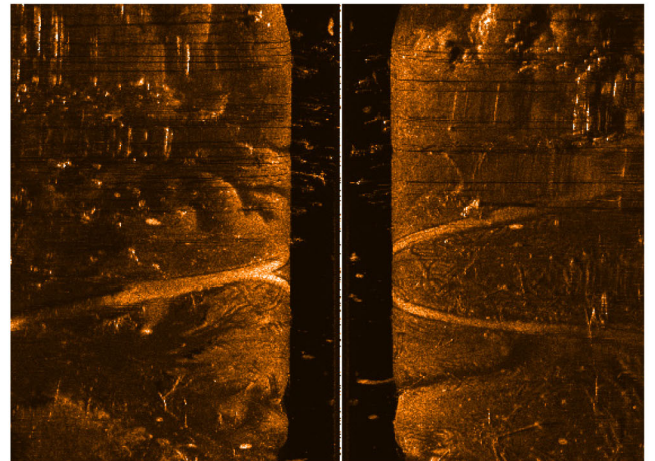
## SONAR IMAGERY



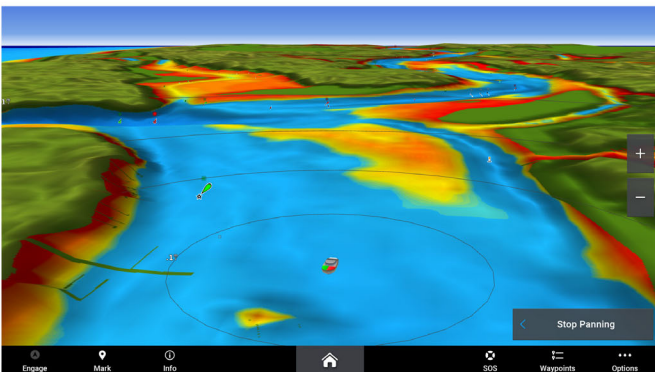
## AERIAL PHOTOGRAPHY



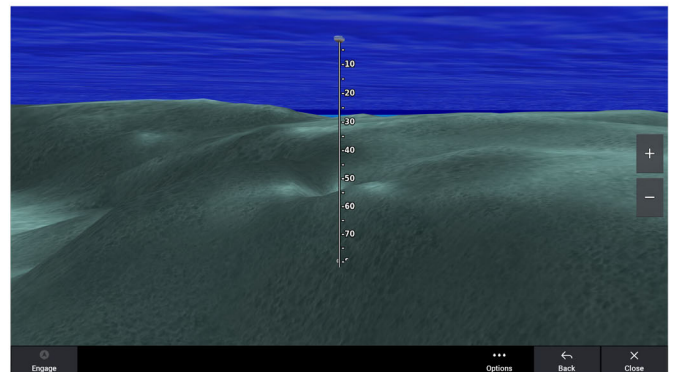
## SIDE SCAN IMAGES



## 3D MARINEREYE



## 3D FISHEYE



# GARMIN NAVIONICS+™ AND GARMIN NAVIONICS VISION+™ CARTOGRAPHY

## PRODUCT COMPARISON:

	GARMIN NAVIONICS+	GARMIN NAVIONICS VISION+
Coastal content	•	•
Inland content	42,000 lakes	42,000 lakes
Detailed nautical charts	•	•
Up to 1' contours	•	•
Daily updates*	Via ActiveCaptain app	Via ActiveCaptain app
Auto Guidance+™ technology <sup>1</sup>	•	•
ActiveCaptain® app support	•	•
ActiveCaptain Community	•	•
Depth range shading	•	•
Shallow water shading	•	•
Dynamic lake level		•
Raster cartography	Via ActiveCaptain app	Via ActiveCaptain app
High-resolution relief shading*		Via ActiveCaptain app
High-resolution satellite imagery*		Via ActiveCaptain app
Sonar imagery*		Via ActiveCaptain app
Aerial photography		•
Side scan images		•
3D FishEye view		•
3D MarinerEye view		•

Note: When you purchase a new Garmin Navionics+ or Garmin Navionics Vision+ cartography product, a one-year subscription is included. The subscription includes access to daily chart updates and download of additional content such as raster cartography and premium features (high-resolution relief shading, high-resolution satellite imagery and sonar imagery) where available. Charts and features that are downloaded during the subscription period remain on the card, but no additional content can be downloaded after the subscription expires.

For preprogrammed charts bought in-store or online, the subscription needs to be activated. When the year is over, you can renew to continue accessing daily updates and premium features.

Garmin Navionics+ or Garmin Navionics Vision+ cartography requires that your compatible chartplotter software is updated to the January 2022 software release, which is conveniently preprogrammed on the cartography cards. The software is also available for download from the ActiveCaptain app or via Garmin Express™ software.

\*Subscription feature

<sup>1</sup>Auto Guidance+ is for planning purposes only and does not replace safe navigation operations

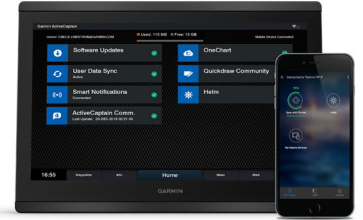
# GARMIN NAVIONICS+™ AND GARMIN NAVIONICS VISION+™ CARTOGRAPHY

## ACTIVECAPTAIN® APP:



### All-in-one App for the Ultimate Connected Boating Experience

Make sure your customers download and use the ActiveCaptain mobile app to access daily chart updates, download additional content or premium features included with their Garmin Navionics+ or Garmin Navionics Vision+ cartography, and maximize their marine hardware experienced. Designed specifically for Garmin users, the ActiveCaptain app provides features and benefits ranging from chart access and updates across Garmin devices to wireless software updates and user data transfers. The dynamic ActiveCaptain Community data provides up-to-date feedback on marinas, boat ramps, and other points of interest. The app is available for both Apple® and Android™ devices. [Click here for more information.](#)



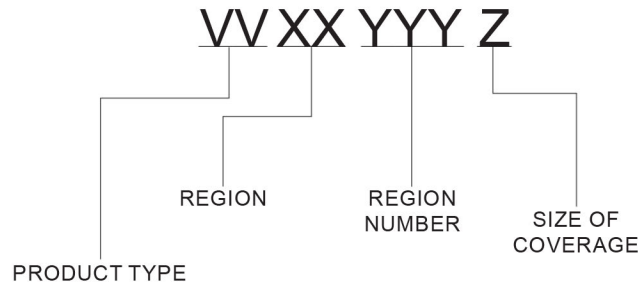
Apple is a trademark of Apple Inc., registered in the U.S. and other countries. App Store is a service mark of Apple Inc. Android is a trademark of Google LLC. Google Play and the Google Play logo are trademarks of Google LLC.

## COMPATIBILITY:

The following devices are compatible with Garmin Navionics+ and Garmin Navionics Vision+ cartography. See [Garmin.com/en-US/chartplotter-compatibility/](http://Garmin.com/en-US/chartplotter-compatibility/) for more compatibility information.

ECHOMAP™ UHD (7/9)	•	GPSMAP 7X3/9X3/12X3	•
ECHOMAP ULTRA (10/12)	•	GPSMAP 8400/8600	•
GPSMAP® 10x2/12x2	•	GPSMAP 8700 BB	•
GPSMAP 12X2 TOUCH	•	GPSMAP A7 - VOLVO	•
GPSMAP A12	•	GPSMAP A12 - VOLVO	•
GPSMAP A7	•	GPSMAP B7/B9/B12 - VOLVO	•
GPSMAP 7X2/9X2/12X2 PLUS	•	GPSMAP 8400/8600 - VOLVO	•

## HOW TO READ YOUR PRODUCT CODE:



### VVXXYYYZ

Product type (VV)  
 NS = Garmin Navionics+  
 NV = Garmin Navionics Vision+  
 BU = Built-in Chart Updates

Region (XX)  
 AE = Asia, East (Japan, China, Indonesia, etc.)  
 AF = Africa  
 AW = Asia, West  
 EU = Europe (including all Mediterranean Sea)  
 PC = Pacific Ocean (Australia, New Zealand, etc.)  
 SA = South America  
 US = U.S., Canada and the Caribbean

Region number (YYY)

Size of coverage (Z)  
 R = Regular  
 L = Large