

**VX** TECHNOLOGY  
BUILT IN

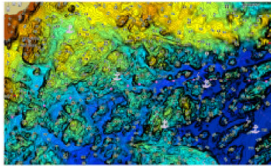


# COASTMASTER™

## U.S. COASTAL

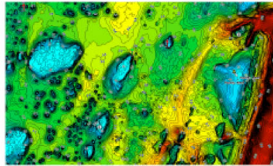
WEST COAST, GULF COAST AND EAST COAST

v1.0



### VX TECHNOLOGY

Vector-accelerated technology provides exceptional map performance and customizable color palettes.



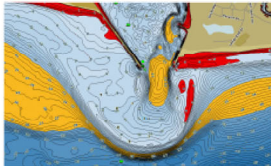
### CHART VIEWS

Simple and easy to change from fishing charts to nautical charts, or create your own custom view settings.



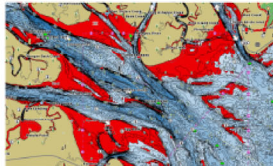
### TIDES AND CURRENTS

Provides the speed and direction of currents, and the height and direction of tides.



### DEPTH HIGHLIGHT

Highlight a selected depth range so you can target productive water and stay where the fish are.



### SHALLOW WATER HIGHLIGHT

Easy-to-see red shading highlights shallow water areas on an adjustable range from 0 to 30 feet.



### WATER LEVEL OFFSET

Adjust the depth contours and shorelines of your CoastMaster charts to the tide conditions.



i-Pilot Link connects with your Humminbird CoastMaster chart and Minn Kota trolling motor, allowing your boat to automatically follow a depth contour line.



## FIND COVERAGE

Visit: <https://www.humminbird.com/support/chart-lists>

**WARNING:** This product can expose you to chemicals including 1,3-Butadiene, which are known to the State of California to cause cancer and birth defects or other reproductive harm. For more information go to [www.P65Warnings.ca.gov](http://www.P65Warnings.ca.gov).

**AVERTISSEMENT :** Ce produit peut vous exposer à des agents chimiques, y compris 1,3-Butadiene, identifiés par l'État de Californie comme pouvant causer le cancer et des malformations congénitales ou autres troubles de l'appareil reproducteur. Pour de plus amples informations, prière de consulter [www.P65Warnings.ca.gov](http://www.P65Warnings.ca.gov).

532705-1\_A

U.S. COASTAL  
DIGITAL GPS CHARTS  
601015-1



0 82324 05411 2



Johnson Outdoors Marine Electronics, Inc.  
Humminbird  
678 Humminbird Lane | Eufaula, AL 36027  
1-800-633-1468 | [humminbird.com](http://humminbird.com)  
©2020 Humminbird®