



# CommBox™ Edge Communications Gateway

## Seamless Starlink and KVH ONE® OpenNet Integration

Rely on CommBox Edge Communications Gateway to boost your connectivity capabilities, whether you want to add Starlink with new tools and controls, expand the capabilities of a KVH TracNet™ or TracPhone® terminal, or make a KVH OpenNet terminal part of a versatile hybrid solution.

We'll work with you to easily add and manage these new channels, making them an integral part of your onboard network to keep you always connected.

## Advanced, Scalable Network Management for Your Yacht

### Connectivity Evolved Through Integrated Services and Systems

Your yacht deserves a communications network that meets your demanding standards. The KVH CommBox Edge Communications Gateway, with its versatile belowdeck devices and features, seamlessly integrates each of your diverse communication systems – 5G, VSAT, Starlink, Wi-Fi, Ethernet, and more – to deliver unmatched control, visibility, security, and bandwidth management.

Enjoy the power and peace of mind that comes with real-time user reporting, advanced channel bonding for improved performance, intelligent hybrid channel switching, remote access and support, performance data, Starlink dashboards and controls, and more, all accessible from an intuitive and user-friendly interface designed for mobile and desktop use.

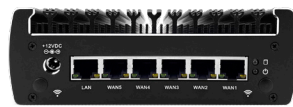
### Onboard Edge Computing Designed for Marine Use

The CommBox Edge 6 and Edge 2 devices offer a powerful on-vessel addition to your network infrastructure, integrating and managing all of your onboard connectivity.

#### CommBox Edge 6



Front View



Back View

#### Manage up to 12 WAN sources

6.1" x 5.0" x 2.1" / 15.5 x 12.7 x 5.3 cm  
+12 VDC (50W Max); 100-240 VAC, 50-60 Hz (AC/DC Power Supply Included)

#### CommBox Edge 2 *(available Q1 2024)*



Front View



Back View

#### Manage up to 5 WAN sources

4.4" x 3.4" x 1.4" / 111 x 85 x 35 mm  
+12 VDC (50W Max); 100-240 VAC, 50-60 Hz (AC/DC Power Supply Included)

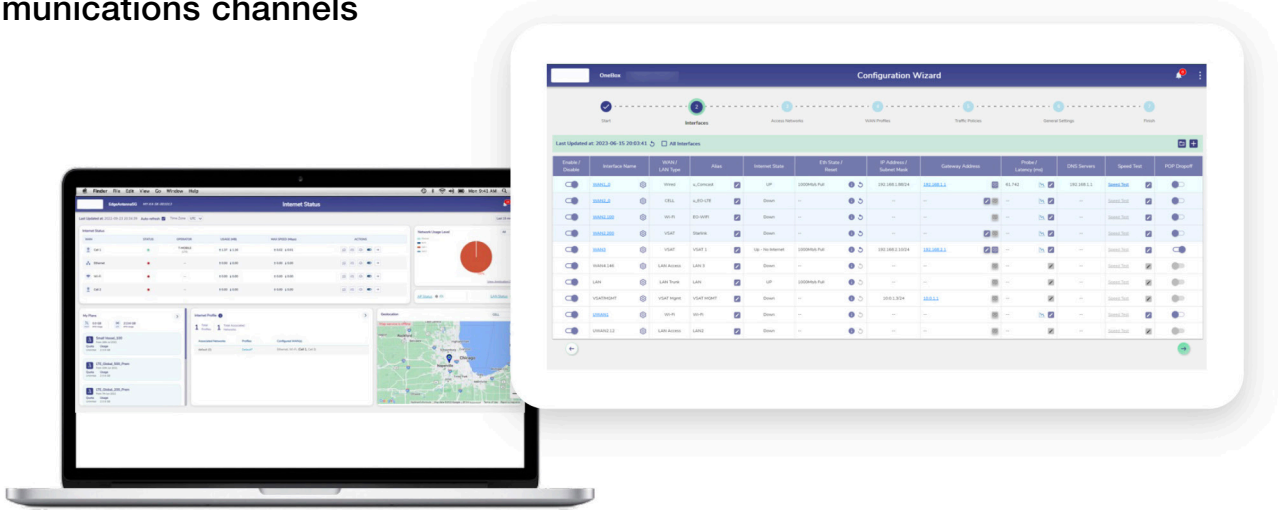
#### Both systems offer:

- Cloud-managed user interface with real-time metering and analysis
- WAN combination and control with advanced routing and channel bonding
- Network protection and security with Deep Packet Inspection, Traffic Policies, and VPN

Visit [kvh.com/edge](http://kvh.com/edge) or contact [sales@kvh.com](mailto:sales@kvh.com) for more details.

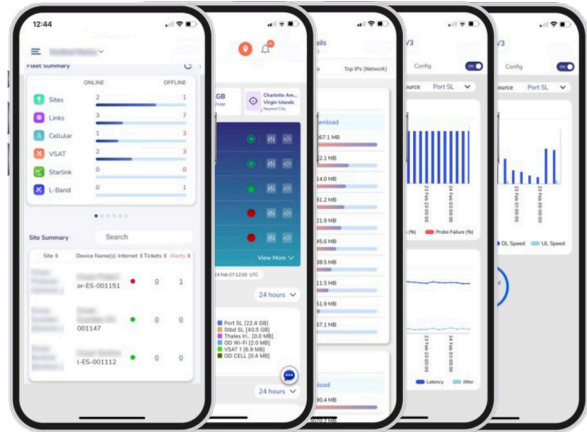
# CommBox Edge Communications Gateway, Exclusively from KVH

Delivering unmatched visibility, control, and optimization of all your communications channels



A simple interface and powerful toolset bring instant scalability to your network

- Device configuration
- WAN selection
- Bandwidth bonding
- Data usage management and reporting
- Starlink data, network, and management tools



Global access with unified control



[www.kvh.com](http://www.kvh.com)



**KVH Industries A/S**  
*EMEA Headquarters*  
Birkeroed, Denmark  
Tel: +45.45.160.180 Fax: +45.45.160.181  
Email: [info@emea.kvh.com](mailto:info@emea.kvh.com)

**KVH Industries, Inc.**  
*World Headquarters*  
Middletown, RI U.S.A.  
Tel: +1.401.847.3327 Fax: +1.401.849.0045  
Email: [info@kvh.com](mailto:info@kvh.com)

**KVH Industries Pte Ltd.**  
*Asia-Pacific Headquarters*  
Singapore  
Tel: +65.6513.0290 Fax: +65.6472.3469  
Email: [info@apac.kvh.com](mailto:info@apac.kvh.com)