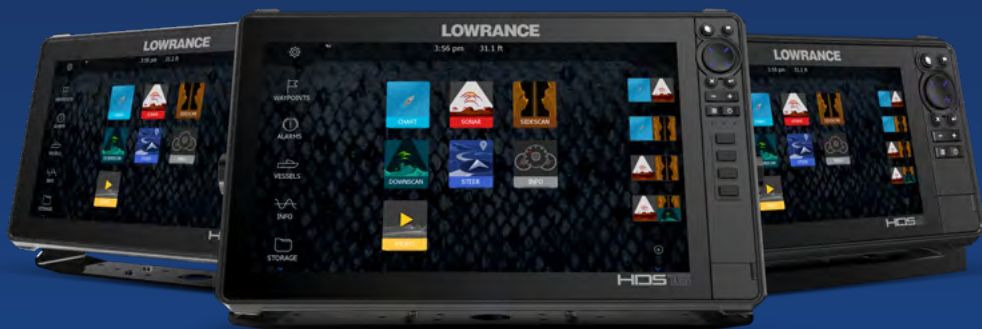


LOWRANCE®

HDS® PRO

Basic Operation Guide

ENGLISH



Scan here
to save a copy

www.lowrance.com

CONTENTS

- 4 About**
- 4 Interface**
- 4 Turn unit on/off**
- 5 Physical control keys**
 - 6 Card reader
- 6 System controls dialog**
- 7 Home screen**
- 7 Launch an application**
- 8 Adjust panel size**
- 8 Favorite pages**
 - 8 Add a favorite page
 - 9 Edit/delete a favorite page
- 9 Menus**
 - 9 Panel menu
 - 10 Settings
- 11 Chart**
 - 11 Waypoints
 - 12 Routes
 - 12 Navigation
- 13 Traditional/CHIRP Sonar**
- 14 Imaging sonar**
 - 14 SideScan
 - 14 DownScan
 - 15 FishReveal™
- 16 ActiveTarget sonar**
- 18 ActiveTarget 2 Wide sonar**
- 19 Ping synchronization**
- 19 Ghost 360**
- 20 Trolling motor**
 - 20 Trolling motor controller
 - 21 Trolling motor autopilot modes
 - 21 Engaging/disengage trolling motor
- 21 Anchor modes**
- 22 Radar**

Copyright

Copyright © 2023 Navico Holding AS.

Trademarks

©Reg. U.S. Pat. & Tm. Off, and ™ common law marks. Visit www.navico.com/intellectual-property to review the global trademark rights and accreditations for Navico Holding AS and other entities.

- Navico® is a trademark of Navico Holding AS.
- Lowrance® is a trademark of Navico Holding AS.
- HDS® is a trademark of Navico Holding AS.
- Active Imaging™ and Active Imaging™ HD is a trademark of Navico Holding AS.
- ActiveTarget® is a trademark of Navico Holding AS.
- FishReveal™ is a trademark of Navico Holding AS.
- Ghost® is a trademark of Navico Holding AS.
- Scout™ is a trademark of Navico Holding AS.
- SD® and microSD® are trademarks of SD-3C, LLC.

Safety, disclaimer and compliance

This product's safety, disclaimer and compliance statements are supplied as a separate document.

Warranty

This product's warranty is supplied as a separate document.

Product features

Features described and illustrated in this guide may vary from your display unit due to continuous development of the software.

More information

Document version: 001

For the latest version of this document in supported languages, visit: www.lowrance.com/downloads/hdspro.

ABOUT

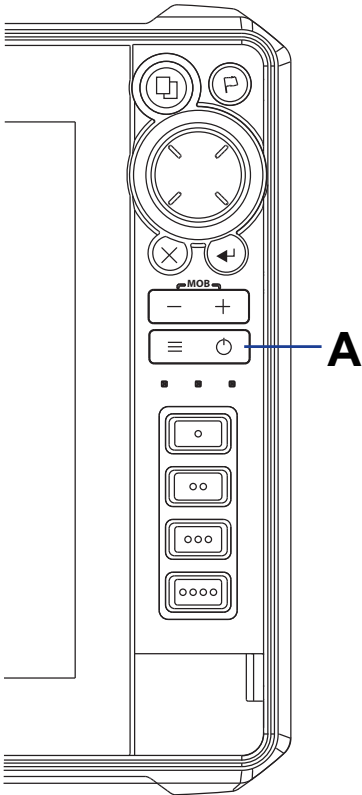
This document describes the basic operation of the HDS Pro multi-function display (MFD) unit. For the latest version of this document and other user guides, we recommend you download the Lowrance mobile app or visit: www.lowrance.com/downloads/hdspro.

INTERFACE

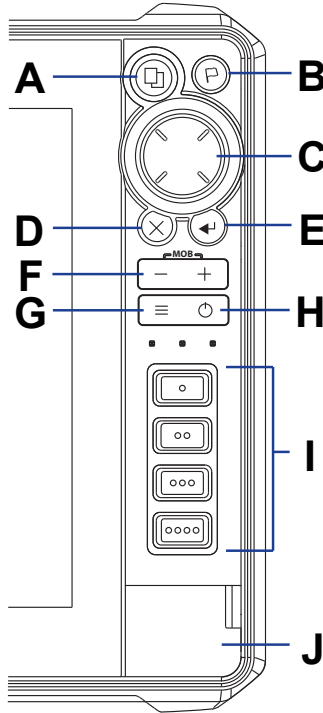
You can interact with your display unit via the touchscreen or by pressing the physical buttons on the bezel.

TURN UNIT ON/OFF

Press the power key (**A**) to turn on the unit. Press and hold the power key to turn off the unit.



PHYSICAL CONTROL KEYS

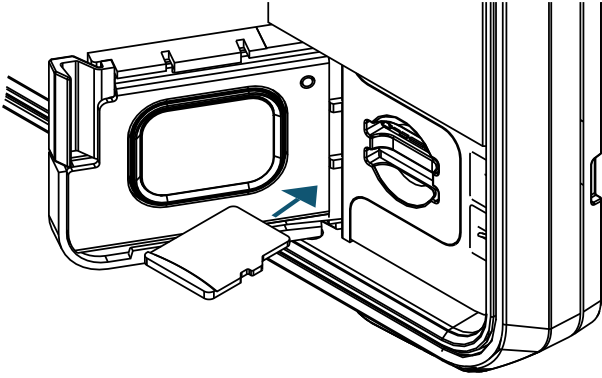


- A** Pages
 - Press to activate the home screen
 - Repeat short presses to cycle through your favorites
 - Long press to set a custom function.
- B** Waypoint
 - Press to open the new waypoint dialog
 - Press twice to save a waypoint
 - Press and hold to access the find dialog
- C** Arrows
 - Press to position the cursor on the image
 - Press to pan the image in any direction
 - Press to navigate menus
- D** Exit
 - Press to clear the cursor or restore the cursor on the chart panel
 - In menus and dialogs, press to return to previous menu level and to exit a dialog.
- E** Enter
 - In menus and dialogs, press to confirm a selection.
- F** Zoom in/out
 - Press to zoom the image
 - Press both buttons at once to save a Man Overboard (MOB) waypoint at the current vessel position
- G** Menu
 - Press to display the menu
 - Press twice to access the settings menu
 - Press and hold to hide the panel menu
- H** Power button
 - When ON, press once to display the system controls dialog
 - Repeat short presses to cycle the backlight brightness
- I** Quick access keys
 - 10" display unit has two quick access keys
 - 12" and 16" display units have four quick access keys
 - Use the configurable buttons option in the system settings dialog to configure the keys
- J** Card reader door



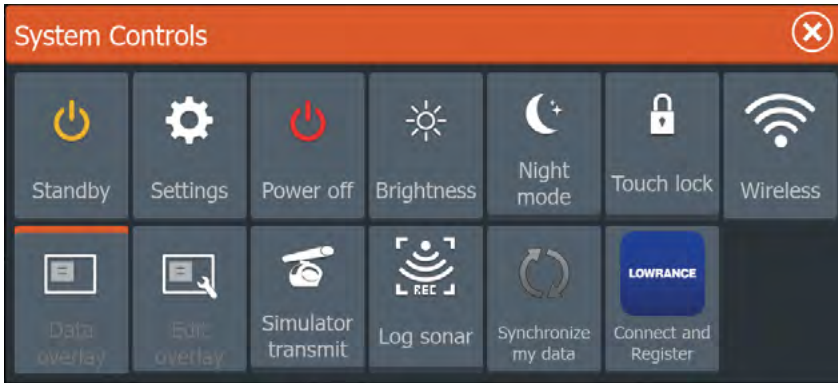
Card reader

Carefully slide a microSD® card into the card reader slot until it clicks into place. To remove the microSD® card, gently push in the card until it ejects out of the slot.



SYSTEM CONTROLS DIALOG

Press the power key once to view the **System Controls** dialog quickly.

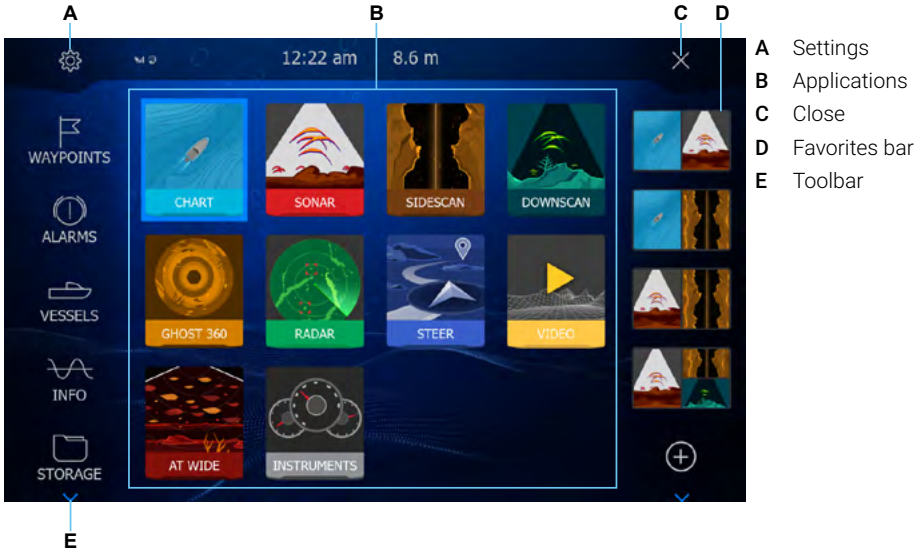


→ **Note:** The content of the system controls dialog depends on connected equipment and active panel.



HOME SCREEN

Press the pages key to view the home screen.

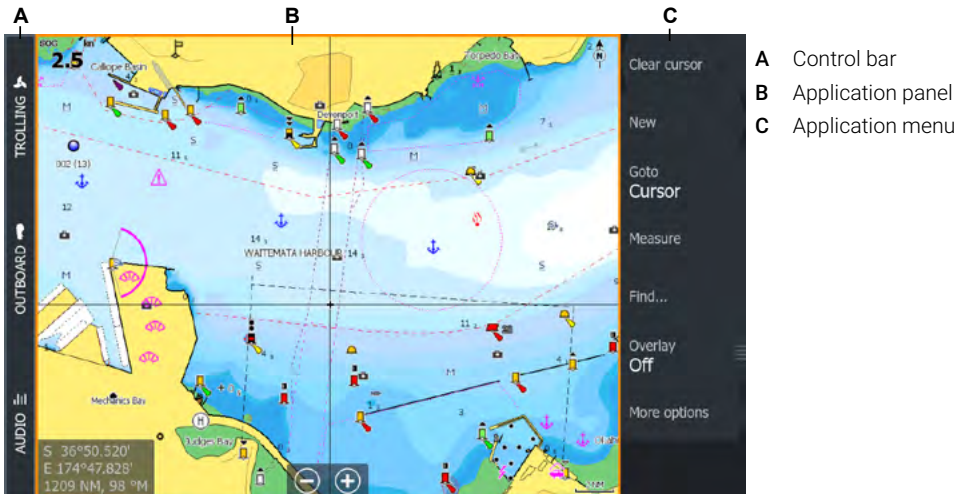


LAUNCH AN APPLICATION

There are three ways to launch an application:

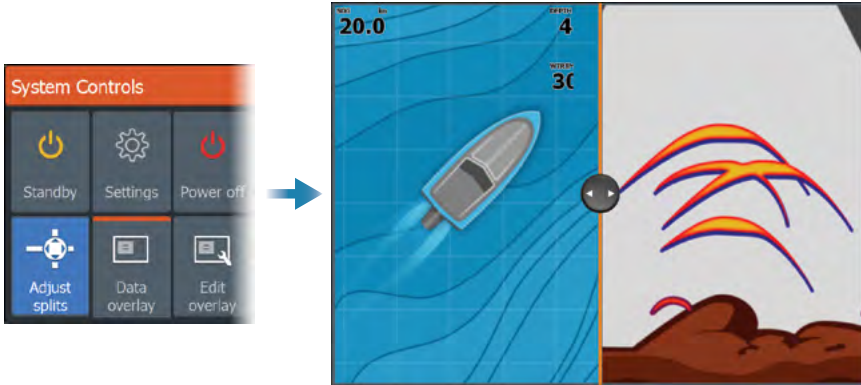
- 1 Select the application icon (full page panel)
- 2 Select and hold an application icon to select a predefined split page
- 3 Select the favorites icon

All applications have three distinct interface areas.



ADJUST PANEL SIZE

To adjust the panel sizes in a split page or favorite pages:

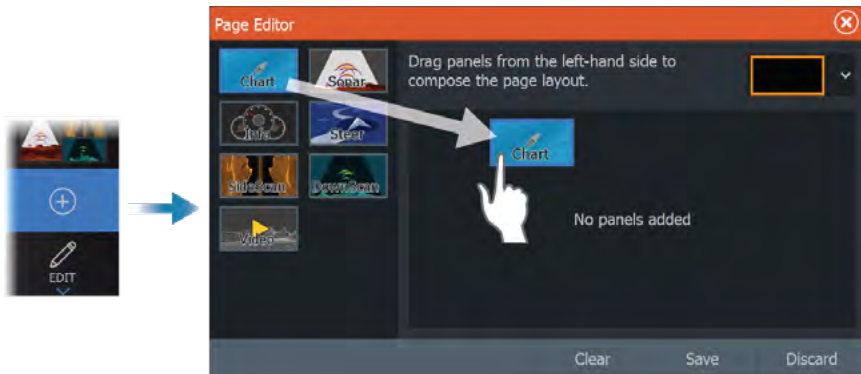


- 1 Select **Adjust splits** on the **System Controls** dialog to show the resize icon.
- 2 Drag the resize icon to set the preferred panel size.
- 3 Save the changes by pressing the enter key, or select **Save**.

FAVORITE PAGES

Add a favorite page



To add a favorite page, select and drag one or more application icons onto the center of the page editor. If you add more than one icon, a custom application page layout can be configured as your favorite.

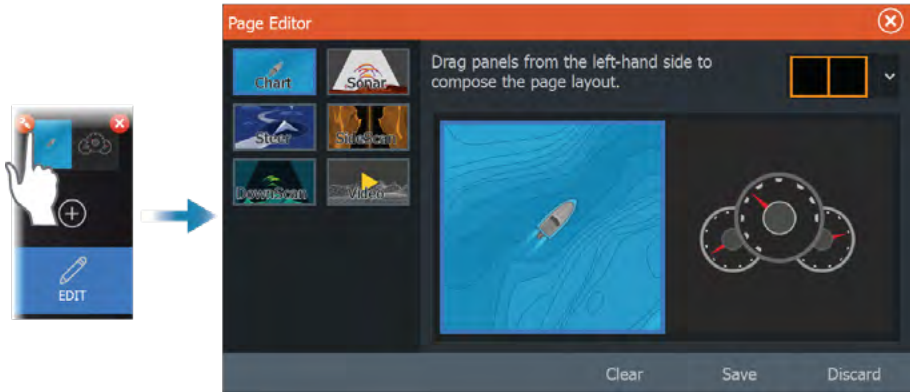


→ *Note:* A maximum of four applications can be added to a favorite page.



Edit/delete a favorite page

To edit a favorite page, select and hold the favorite page you want to edit, then select  or select **Edit** on the favorites bar, then select  on the favorites page.



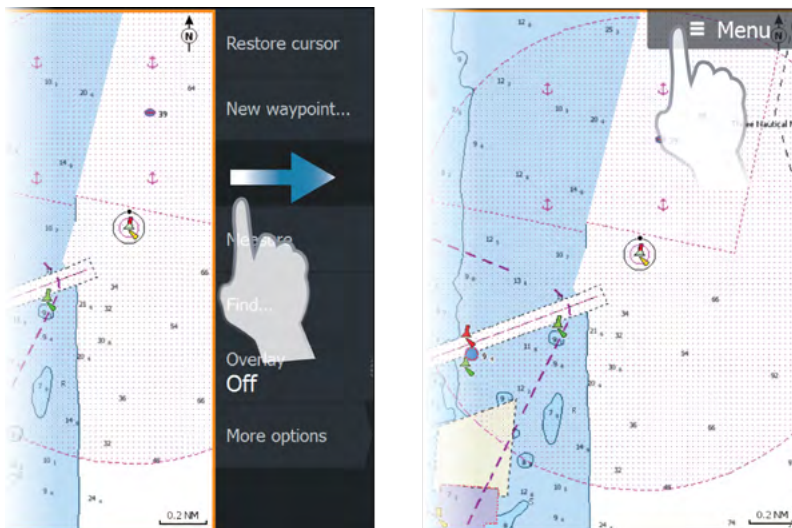
To delete a favorite page, select  next to the favorite page.

→ *Note: The delete action cannot be undone.*

MENUS

Panel menu

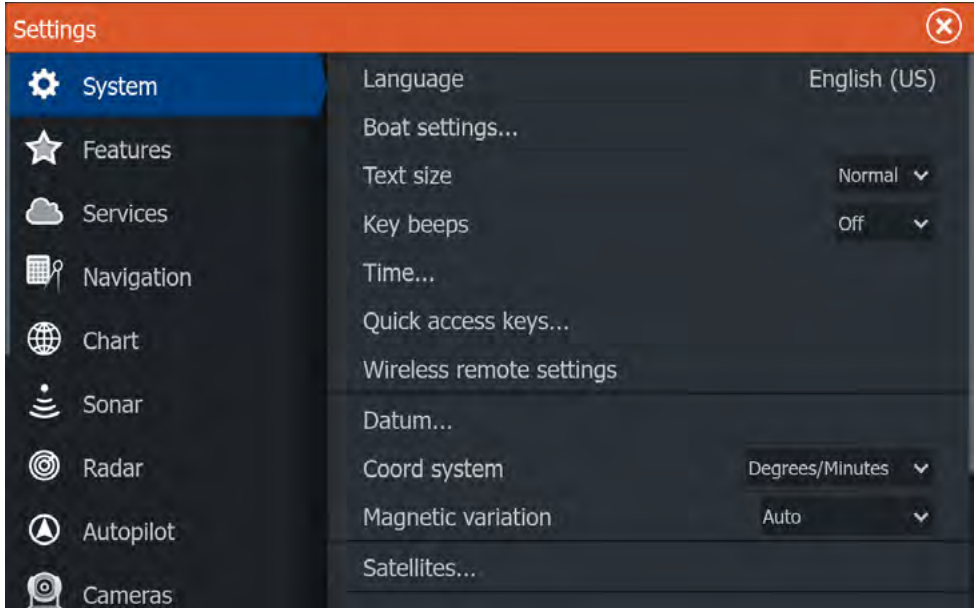
To hide the panel menu, swipe the menu to the right or press and hold the menu key. To restore the panel menu, select **Menu** or press the menu key.



Settings

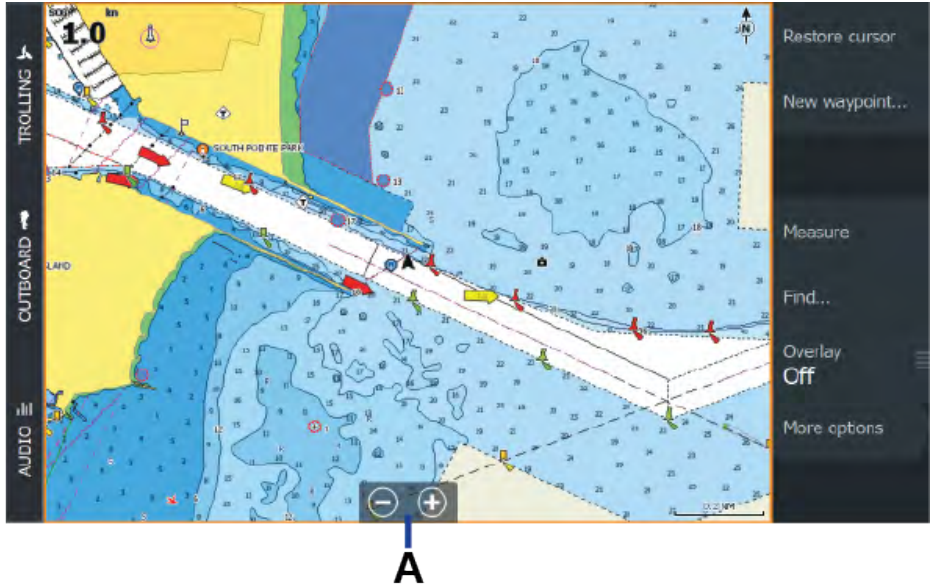
There are three ways to view the **Settings** screen:

- 1 Press the menu key twice.
- 2 Select **Settings** on the **System controls** dialog.
- 3 Select **Settings** on the home screen.



CHART

Use the Chart application to navigate to a waypoint, create a route or track your current course.



To navigate the chart:

- Use pinch/spread gestures to zoom the chart image. You can also zoom by using the zoom controls (A), or the + or - keys.
- Select and drag your finger on the screen to pan the chart.
- Select a position on the chart to show information about a location or chart icon.

Waypoints

Select **New waypoint** on the chart menu to create a new waypoint.



- **Note:** By default, the waypoint will be placed at the vessel's position. With an active cursor position, the waypoint will be placed at the selected cursor position.



Routes

To create a route:

- 1 Activate the cursor on the chart panel.
- 2 Select **New route** on the menu.
- 3 Select a position on the chart to mark your first route point.
- 4 Continue to select your next position(s) to add additional route points.
- 5 Selecting **Save** on the menu when done.

Navigation

Cursor position

Position the cursor at the selected destination on the panel, then select **Go to** on the menu.

Route navigation

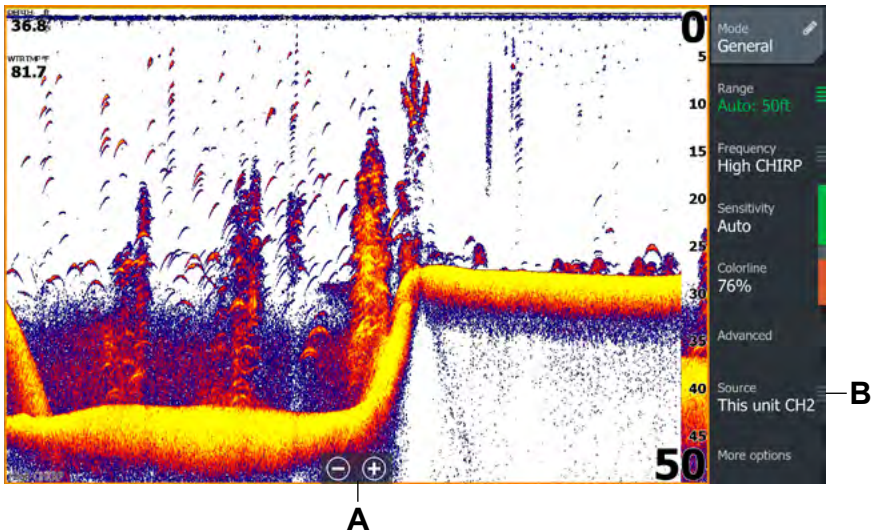
Select a route to make it active, then select **Start route** on the menu. Alternatively, select the route from the routes dialog, then select **Start** in the dialog.



TRADITIONAL/CHIRP SONAR

The Sonar application displays an image of the water and sea floor beneath your vessel, allowing you to detect fish and examine the structure of the sea floor.

It detects objects under water by sending and receiving sound pulses from a compatible transducer.

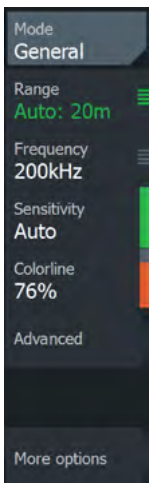


A Adjust the sonar image by selecting the zoom buttons (A), or the + or - keys.

B Use to select the desired transducer.

Sonar settings

Use the menu options to adjust the sonar image.



- **Mode** – Select a mode suitable to your water activity. The options below will change based on the selected mode.
- **Range** – The range settings determine the water depth visible on the screen.
- **Frequency** – The unit supports several transducer frequencies. Available options depend on the type of transducers connected to the system.
- **Sensitivity** – Increasing sensitivity shows more detail on the screen. Decreasing sensitivity reduces detail. Auto sensitivity automatically adjusts the sonar return to the optimal levels.
- **Colorline** – Use to adjust the colors of the display to help differentiate softer targets from harder ones.

→ **Note:** When the cursor is active, some options on the sonar menu are replaced with cursor mode features. Select **Clear cursor** to return to the sonar menu.



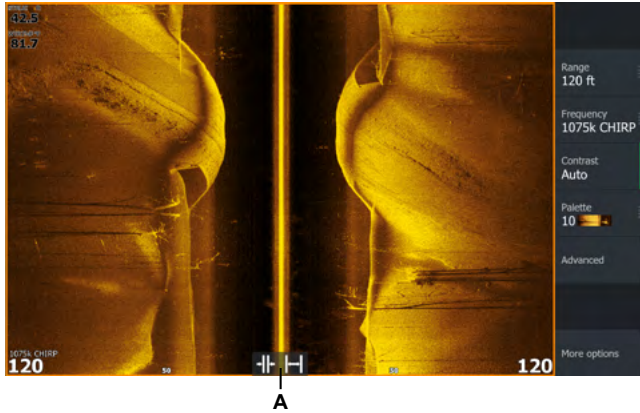
IMAGING SONAR

SideScan and DownScan are perfect for pinpointing fish-holding areas like rock piles, standing timber, weed beds, ditches, and drop-offs.

→ **Note:** Only one structure source can be displayed on the MFD at a time.

SideScan

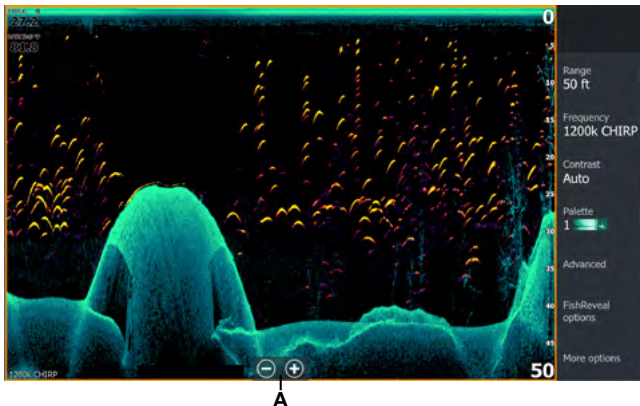
SideScan provides views to each side of the boat, allowing you to cover more water in a shorter period of time, and view areas too shallow for your boat – like next to the shore or bank. The SideScan panel is available when a SideScan capable transducer is connected to the unit.



Use the range zoom controls (A) to zoom in or out. The range represents the distance to the left and right of the screen's center.

DownScan

DownScan provides detailed images of structure and fish directly below your boat, providing photo-like images of rocks, trees, bottom composition and other underwater structure. The DownScan panel is available when a DownScan capable transducer is connected to the unit.

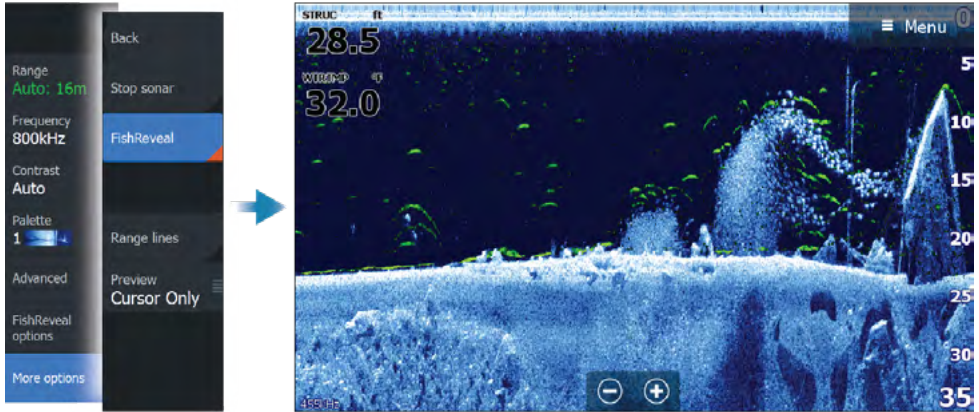


Use the zoom keys (A) to adjust the image, or drag your finger on the screen to see sonar history.



FishReveal™

Select FishReveal™ to display fish arches in the SideScan or DownScan image.



→ *Note: SideScan FishReveal™ requires an S3100 sonar hub and compatible ActiveImaging™ HD FishReveal™ transducers to be connected to the unit.*



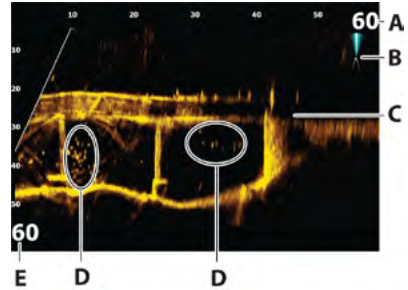
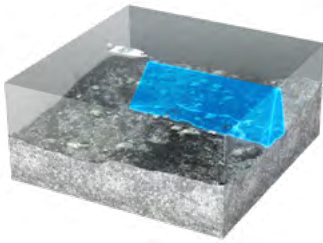
ACTIVETARGET SONAR

When an ActiveTarget transducer and its sonar module are connected to the Ethernet network, the ActiveTarget button shows on the home screen.

The ActiveTarget transducer can be used in the following modes:

Forward

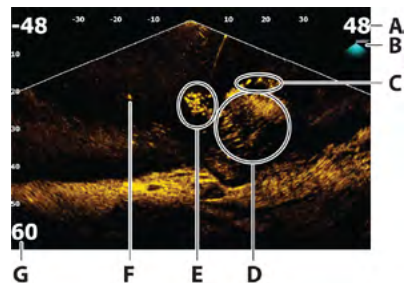
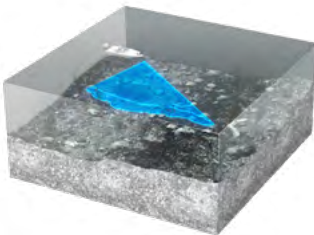
Use this mode to see fish and structure directly in front of the transducer. It provides a 18° side-to-side and 135° top-to-bottom view.



- A Distance range scale (distance from the transducer)
- B ActiveTarget icon, indicating beam direction
- C Structure (a bridge) on bottom
- D Fish
- E Down range scale (distance below the transducer)

Down

Use this mode to see fish and structure below the transducer for vertical fishing. It provides a 18° side-to-side and 135° front-to-back view to help you watch your lure and real-time fish movements.

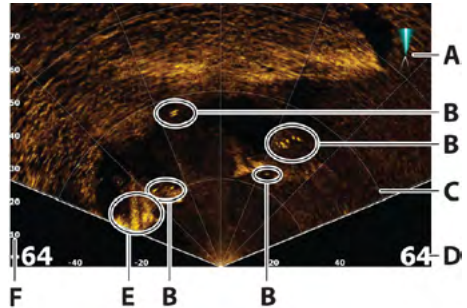
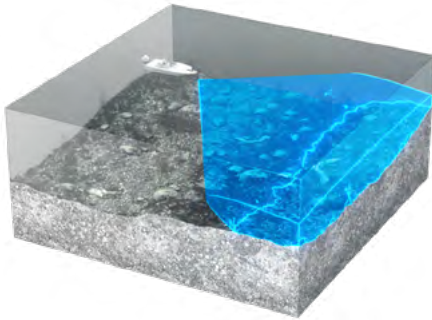


- A Distance range scale (distance from the transducer)
- B ActiveTarget icon, indicating beam direction
- C School of fish
- D Underwater brush with schooling fish in and around it
- E School of fish
- F Single larger fish
- G Down range scale (distance below the transducer)



Scout

Use this mode to scan large areas for fish and structure and to identify the direction of your next cast. This mode provides a 135° side-to-side and 18° top-to-bottom view of the water column.



- A ActiveTarget icon, indicating beam direction
- B Fish
- C Range grid lines can be turned off/on, and set to straight or arc from the More menu.
- D Distance range scale (distance to the left/right of the transducer)
- E Underwater structure (rock edge)
- F Range scale (distance in front of the transducer)

→ Note:

- The transducer mounting position determines the mode.
- Multiple ActiveTarget sources can operate independently of one another, and each source can be assigned to a multi-application panel on the display.
- Refer to your sonar system's installation manual for the process to set up the system for sonar data sharing.

Refer to the full operator manual for further details on ActiveTarget features.

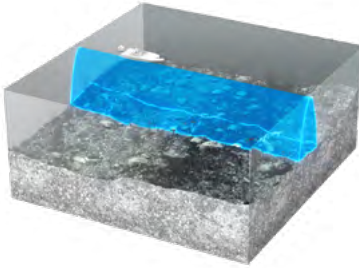


ACTIVETARGET 2 WIDE SONAR

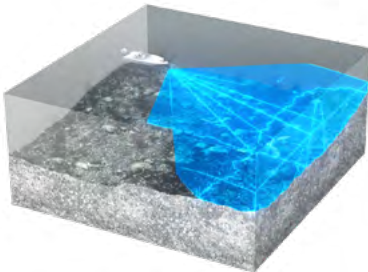
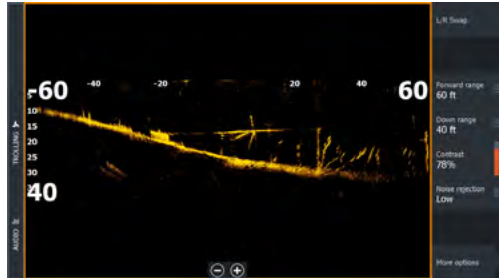
If you have two paired ActiveTarget 2 systems (two ActiveTarget 2 sonar modules and two ActiveTarget 2 transducers) on your vessel, you can view wide sonar images on your multi-function display. When the transducers are paired, you can launch the **AT WIDE** application from the home screen.

You can install the transducers on the same trolling motor to achieve the following dual views:

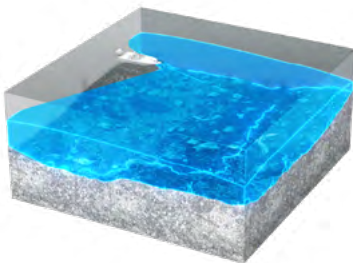
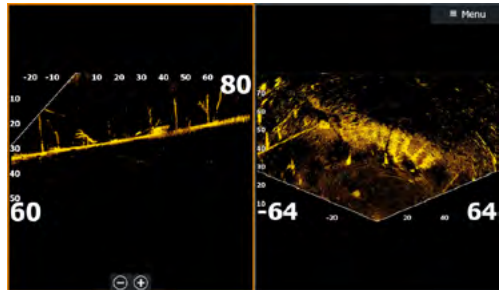
- 180° (forward and back view) – Provides a full 180° view to track fish and structure as you pass over it.
- Scout and forward – Scan large areas for fish and structure to identify schools of fish and the direction of your next cast.
- Scout wide – 270° bird's-eye view to locate fish and structure in relation to the vessel.



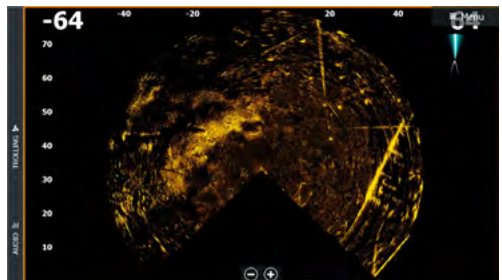
180° (forward and back view)



Scout and forward



Scout wide



→ **Note:** Refer to the full operator manual for further details on ActiveTarget 2 features.



PING SYNCHRONIZATION

Ping synchronization allows for transducers running similar frequencies to be used simultaneously without interference.

For this feature to work, the ping synchronization wires need to be connected between sonar modules and/or MFDs. For example, a connection must be made between HDS Pro and S3100 or HDS Pro and ActiveTarget 2 sonar module.

→ **Note:** Only connect the ping synchronization wire cable for sounder modules/hubs or MFDs that have transducers connected.

⚠ WARNING: Consult the sonar module installation manual for further information on compatibility and specific connections.

GHOST 360

Use the Ghost 360 feature to get a 360° view of the underwater environment in relation to your boat's position.

This feature is available when an Activelmaging 3-in-1 nose cone is attached to your Ghost trolling motor. It allows anglers to pinpoint key underwater elements such as fish, standing structures, and resting structures on the bottom.

→ **Note:** Ghost 360 is not a network capable feature. It can only be viewed on the multifunction display (MFD) that the 3-in-1 nose cone is connected to.



For further details on the Ghost 360 feature, refer to the full operator manual.

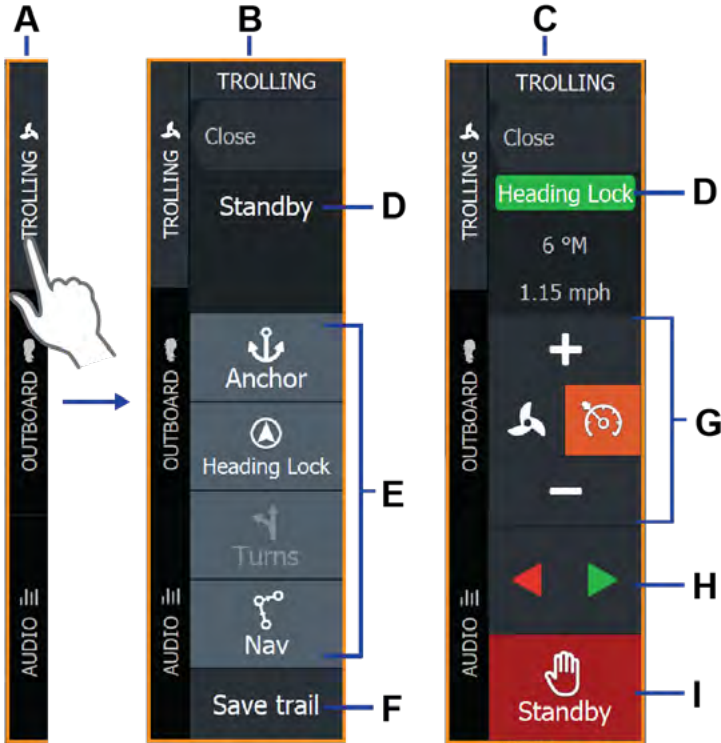


TROLLING MOTOR

⚠ WARNING: An autopilot is a useful navigational aid, but DOES NOT replace a human navigator. Ensure the autopilot has been installed correctly, commissioned and calibrated before use.

If both an autopilot computer and a trolling motor are configured for MFD control, only one of them can be active at a time. You may need to select **Switch autopilot** to proceed.

Trolling motor controller



- A Control bar
- B Trolling motor controller (disengaged)
- C Trolling motor controller (engaged)
- D Mode indication
- E List of available modes
- F Record/Save button
- G Mode dependent information
- H Mode dependent buttons
- I Engage/Standby button

When the trolling motor controller is the active panel, it is outlined with a border.

→ **Note:** The autopilot controller can also be activated from the system controls dialog.



Trolling motor autopilot modes

There are three trolling motor autopilot modes available:

- **Anchor:** The trolling motor maintains the vessel position at a selected location.
- **Heading lock:** The trolling motor steers the vessel on the set heading.
- **Note:** *When activated, the trolling motor autopilot selects the current compass heading as the set heading.*
- **Nav:** The trolling motor autopilot steers the vessel to a specific waypoint or route. Vessel position information is used to steer the vessel on the track line and to the destination.

Engaging/disengage trolling motor

To engage the trolling motor, select the preferred mode button. The trolling motor autopilot will engage in the selected mode and the controller will change to show active mode options.

Select **Standby** at any time to disengage the autopilot and steer the boat manually.

For further details on the trolling motor autopilot functionality, refer to the operator manual.

ANCHOR MODES

Using the built in GPS, the trolling motor maintains the vessel position at a selected location.

→ **Note:** *The following anchor mode features will be available via a future software update.*

Anchor mode at a distance

Use this feature to anchor at a set distance from your waypoint or cursor position. Anchoring at a distance allows you to position your boat such that is not directly over the top of the structure you are trying to fish. Ideally, set this distance to be casting distance away from the waypoint.

Orbit a waypoint using GPS

This feature helps you maneuver the vessel in a circular orbit around the waypoint or cursor position without having to actually drive the boat in a circle. Ideally, set this orbit to be casting distance away from the waypoint.

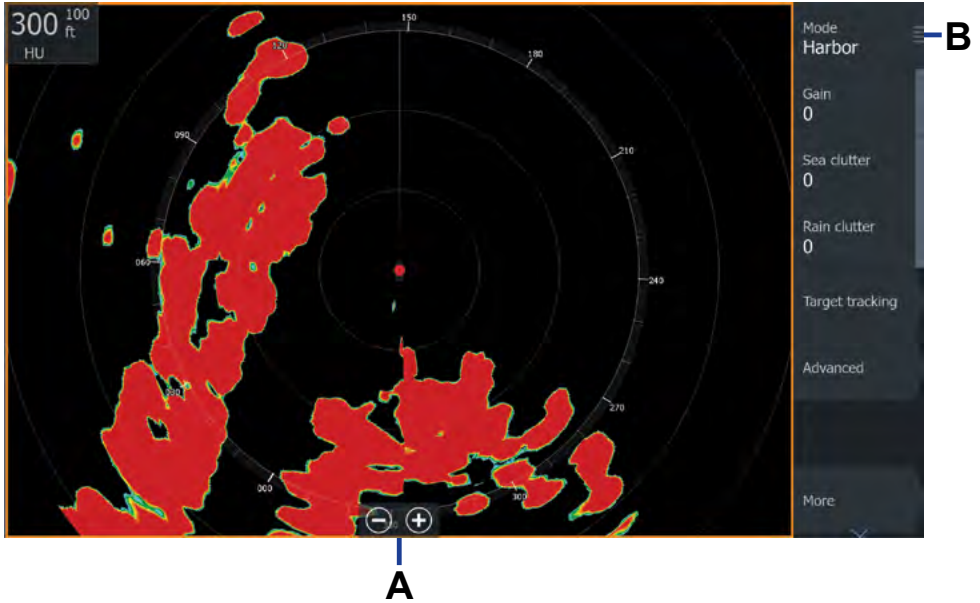
→ **Note:** *You can choose between a port or starboard orbit direction and control the speed via the course lock feature.*



RADAR

Use the radar to navigate safely, track targets, and detect flocks of birds from a distance.

→ **Note:** A compatible radar must be installed and commissioned for the Radar application to work.



- Turn the radar transmitting on/off from the menu or press the power key once to see the menu.
- Select + or - (**A**) on the screen or use the + or - keys on the unit to set the range.
- Choose from the following radar modes (**B**) **Custom, Harbor, Offshore, Weather, and Bird** modes.
- You can adjust gain, sea clutter and rain clutter settings from the adjust menu.





