

LED FLOOD

8W

1600 LUMEN



8 WATT 1,600 LUMEN LED FLOOD

LLB-61Wx-81-00 (10-40VDC)

LLB-61W1-0A-00 (12VDC ZERO EMI)

LLB-61W1-1A-00 (24VDC ZERO EMI)

Compact indoor/outdoor light utilizing the newest high performance LED technology. Excellent for lighting up small to medium size areas. Low profile design has an IP67 Rating and can be surface mounted or tilted on its Stainless Steel Bracket. When surface mounted the bracket seems to disappear for an attractive look. Hard Anodized aluminum housing with Baked Urethane finish for extreme durability. Beam angle of 120 degree. Tempered Glass will not yellow like plastic lenses. Breather Valve.

IP Rating: Outdoor IP67

Power: 8 Watt

Voltage -81 10-40VDC (12VDC 0.68A)

Voltage -0A 12VDC Only (No EMI)

Voltage -1A 24VDC Only (No EMI)

Output: 1,600 Lumen >80CRI

Dimensions: 74 (2.9") W x 130 (5.1") H x 15 (0.59") D

Enclosure: Aluminum / Baked White Urethane

Wiring: Two Wire - Jacketed

Wire Length: ~36 Inches

Mounting: Bracket



LLB-61W1-81-00 Warm White (3000K)

LLB-61WC-81-00 Cool White (5700K)

LLB-61WA-0A-00 Warm White (3000K)

LLB-61W1-1A-00 Warm White(3000K)

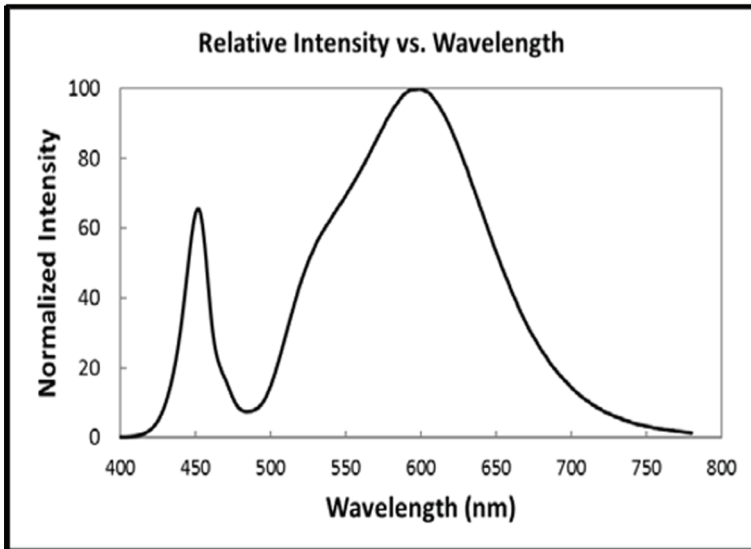


Typical Characteristics Graphs

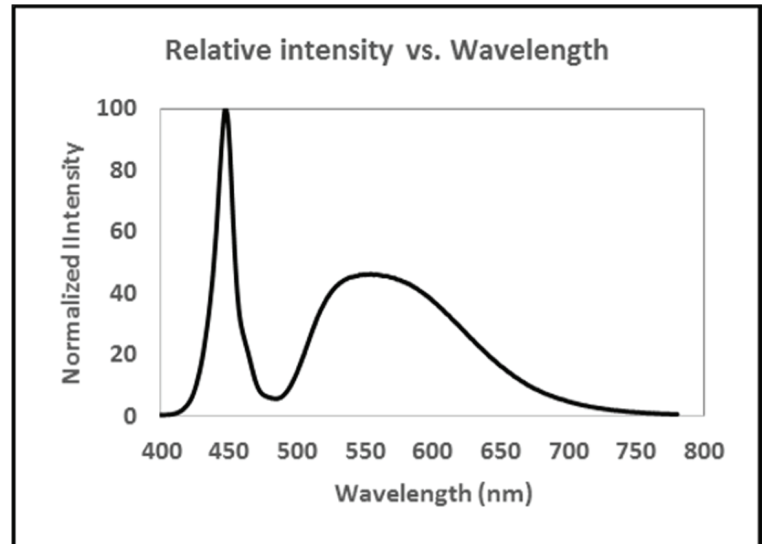


Spectrum Distribution

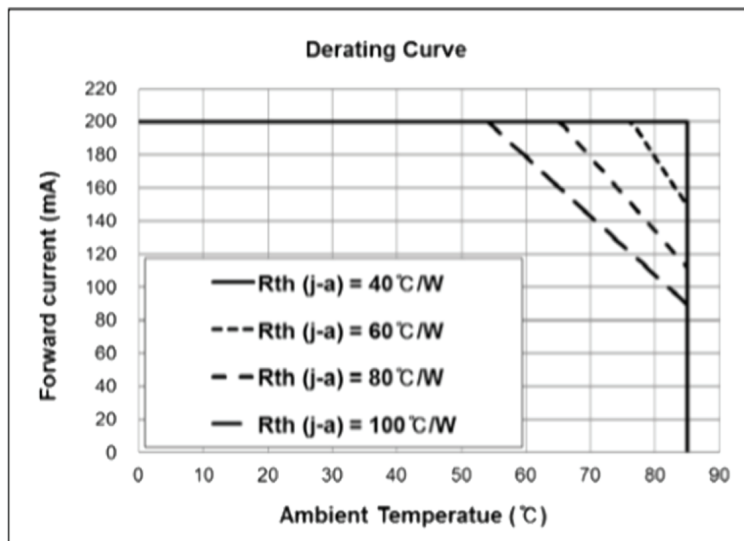
CCT: 3000K (80 CRI)



CCT: 5700K (80 CRI)

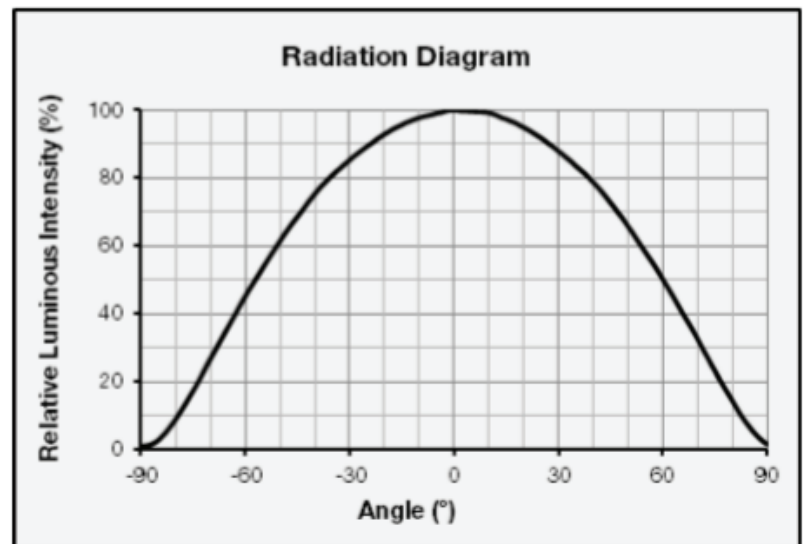


Derating Curve

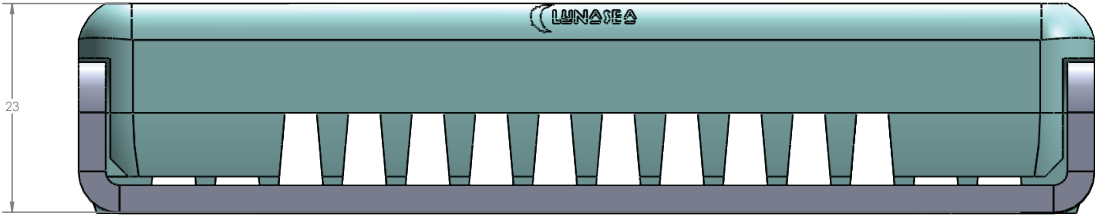
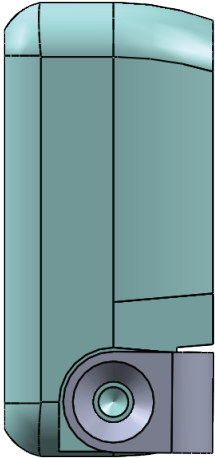
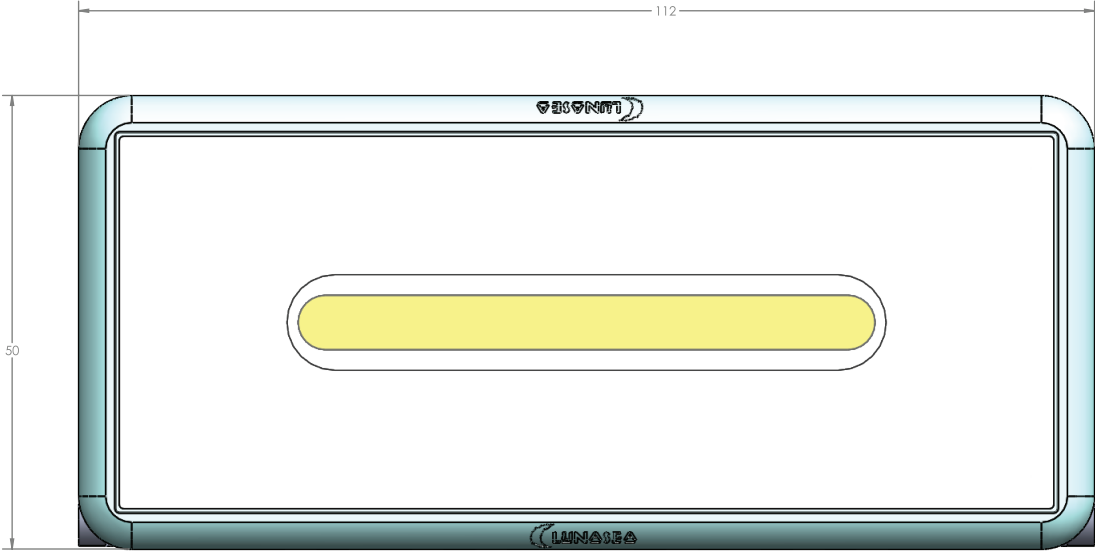


Beam Angle Characteristics

$T_s = 25\text{ }^\circ\text{C}$



Mechanical Dimensions



NEW ZERO EMI LIGHTING



INTRODUCING ZERO EMI LIGHTING

This means no AIS or VHF Interference

All light, no EMI! With Zero radio emissions these lights can't interfere with your communication and navigation equipment. Same powerful output & high color rendering.

**They are
not just quiet
They are SILENT!**

