

DIGITAL & CHIRP

# SONAR MODULES

CP370 CP470 CP570

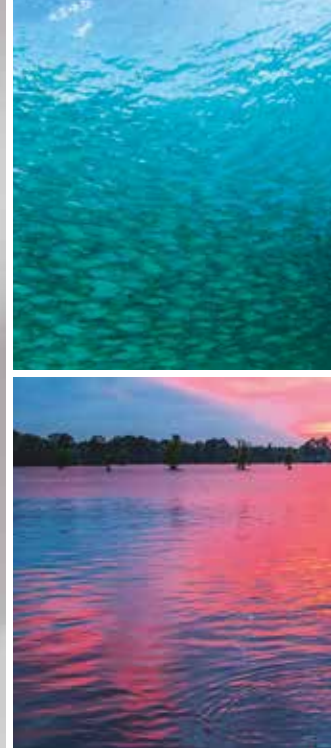
HIGH-PERFORMANCE MODULES FOR  
OFFSHORE AND COASTAL FISHING



**Raymarine**<sup>®</sup>  
BY **FLIR**

# CP370 DIGITAL SONAR MODULE

The CP370 delivers exceptional clarity, sharper fish targets, and automatic operation using Raymarine's next-generation ClearPulse™ digital sonar processing. The CP370 boasts up to 1,000 watts of power and operates at 200kHz for inshore and 50kHz for offshore fishing. ClearPulse™ signal processing intelligently manages the CP370 sonar parameters in all conditions so anglers can spend more time fishing and less time adjusting the sonar.



## SHARPER, CLUTTER FREE TARGETS

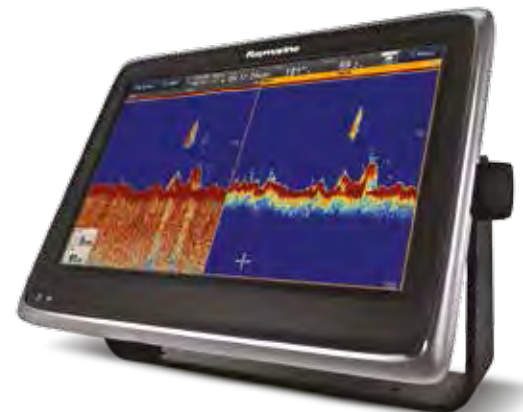
- Smarter target intensity controls reveal bait and game fish with exceptional clarity
- Enhanced digital filtering reveals fish targets through the entire water column
- Spend less time looking for fish, and more time fishing. CP370 takes the guesswork out of interpreting the sonar display.

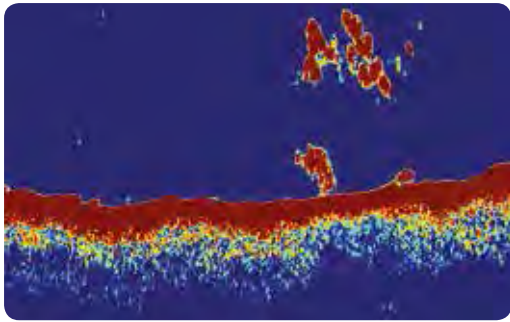
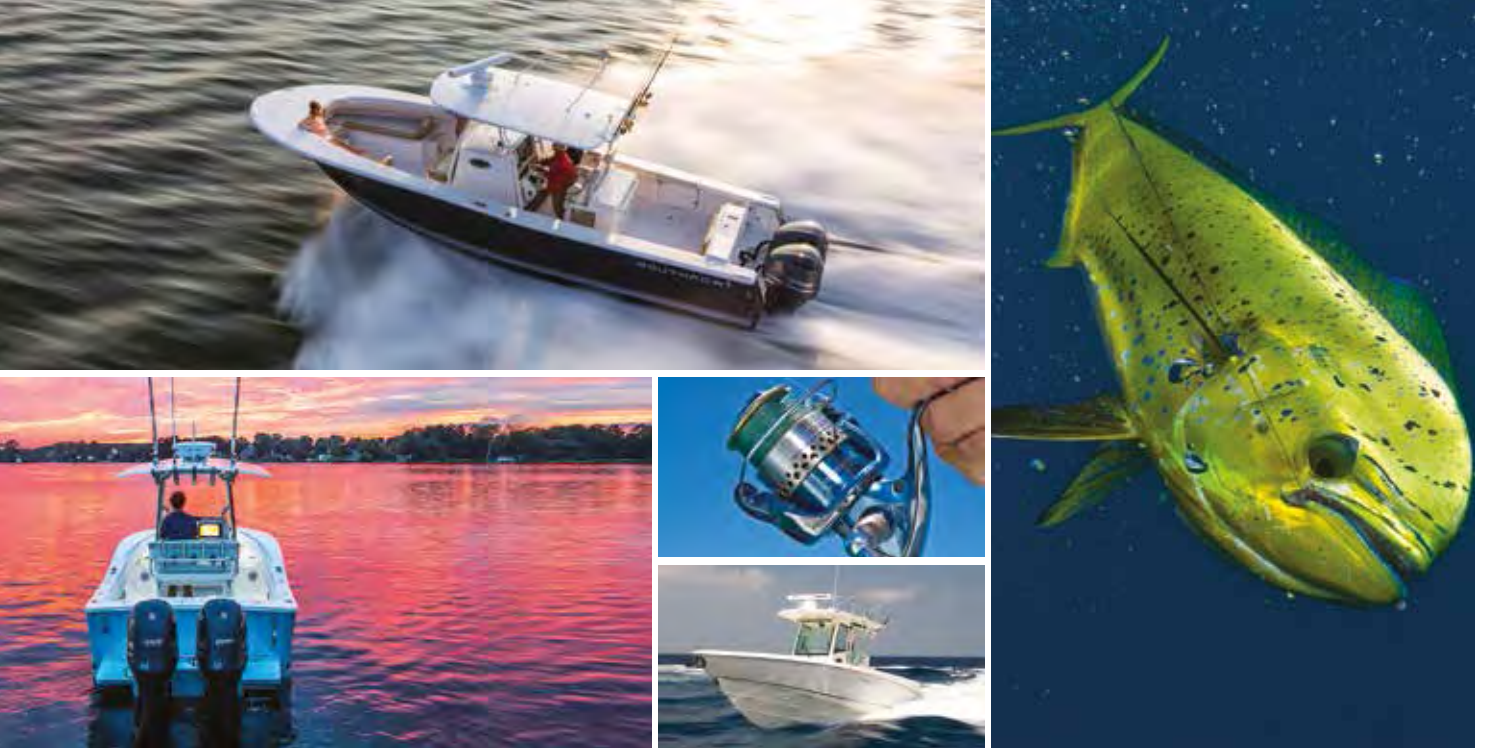
## GO DEEPER

- Up to 1,000 watts of power to track the sea floor down to 5,000 feet (1,500m).
- High performance dual-frequency (50/200 kHz) sonar for coastal and offshore fishing.

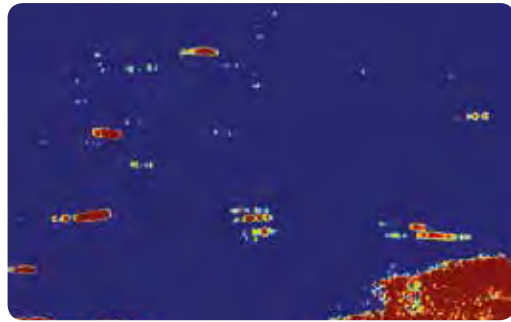
## ACCURATE BOTTOM TRACKING

- Track the bottom in extreme conditions with advanced ClearPulse™ signal processing.
- New and improved bottom tracking algorithms deliver reliable performance in challenging conditions like running at high speeds and transitioning across canyons.

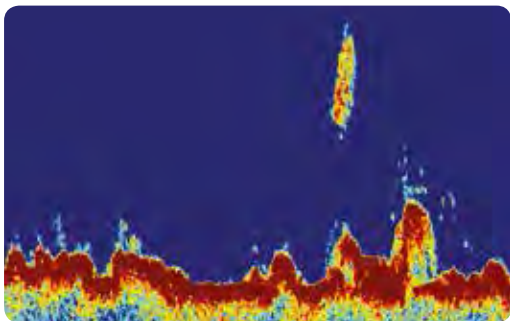




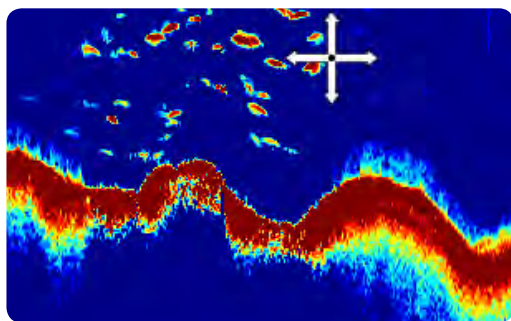
Sharper Fish Targets



Enhanced Automatic Sensitivity Control



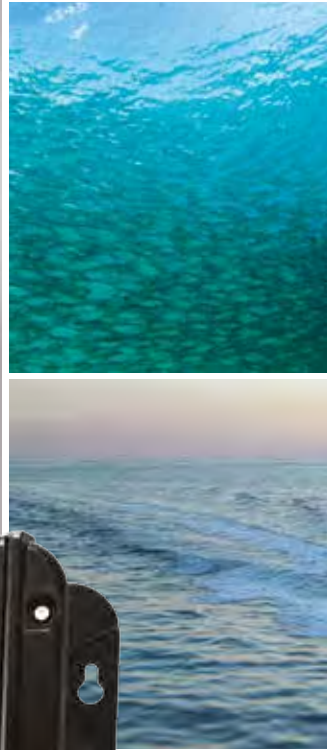
Better Noise Reduction



Enhanced Bottom Tracking

# CP470/CP570 CHIRP SONAR MODULES

Engineered for serious anglers, the CP470 and CP570 sonars bring best-in-class target separation and high resolution CHIRP sonar imagery to Raymarine multifunction displays. Using a wide spectrum of frequencies and greater sensitivity the CP470 and CP570's advanced CHIRP transceiver can see through dense schools of baitfish, identify thermoclines, and simultaneously target desired game fish. Rated for offshore use and rough conditions, the CP470 and CP570 intelligently filter out unwanted noise while producing high resolution fish targets and reliable bottom tracking. Both models offer dual CHIRP sonar capabilities. For the professional angler the CP570's two fully independent sonar channels deliver faster target identification and up to 4kW of combined output power.



CP470 (left) and CP570 (right)

## SERIOUS OFFSHORE SONAR

Superior target definition and enhanced sensitivity using Raymarine's exclusive wide spectrum CHIRP sonar technology.

- Target fish, identify bait, and track the sea floor down to 10,000ft. (3,000m) with two adjustable CHIRP sonar channels.
- Hunt for fish in different parts of the water column simultaneously with the CP570's two fully independent 2kW sonar channels.

## STUNNING DETAIL & CLARITY

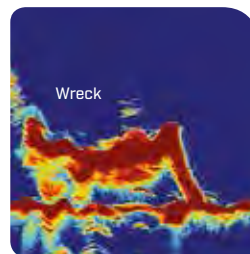
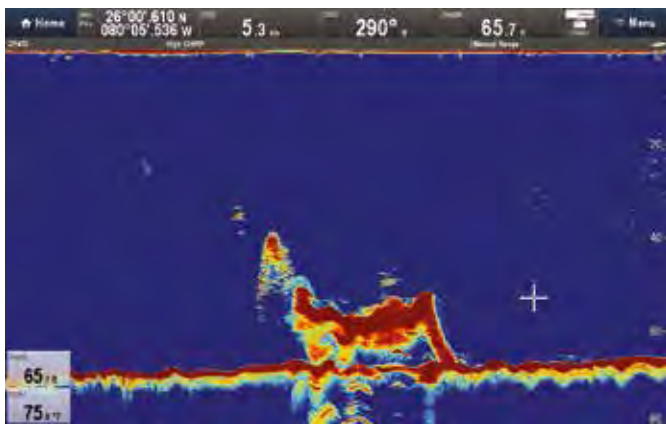
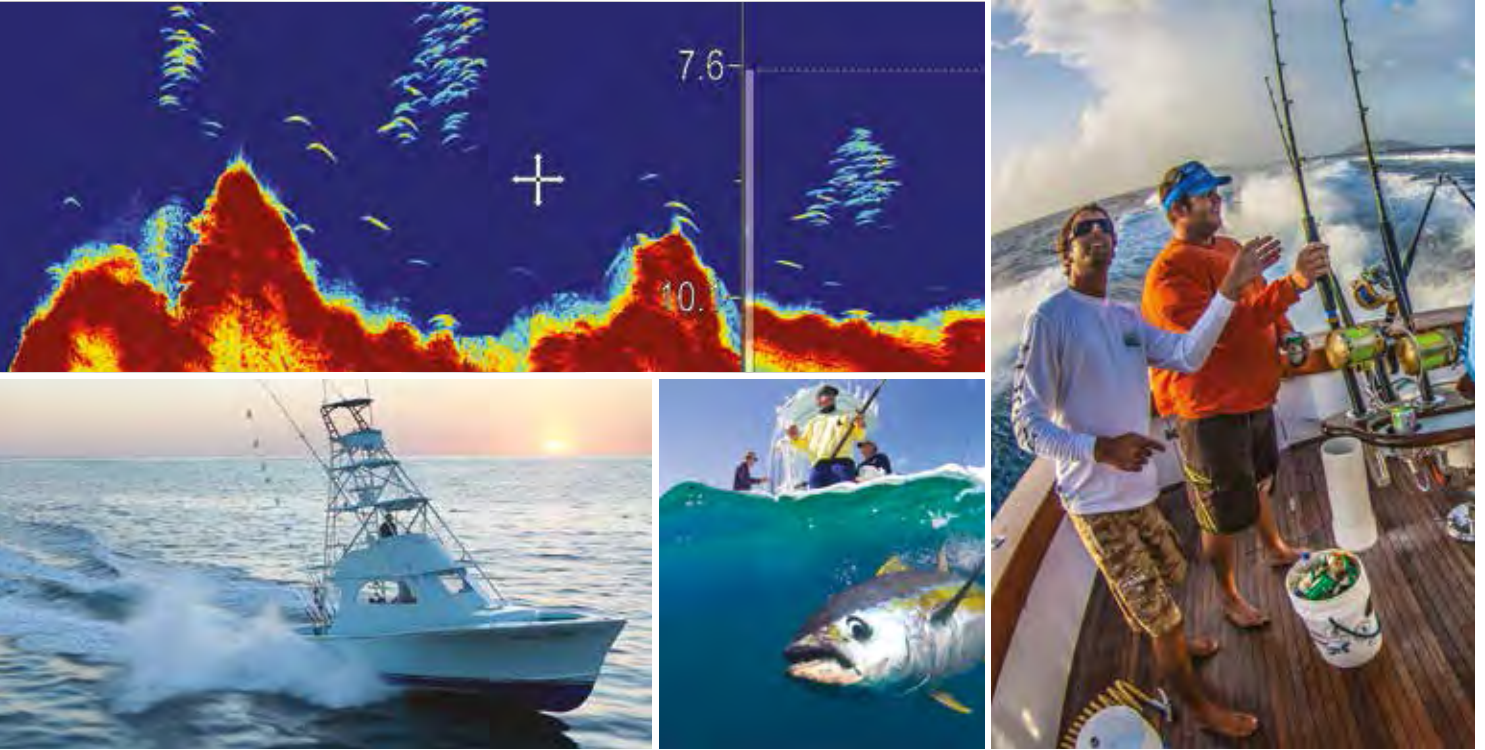
With 10 times the resolution of ordinary sonars the CP470 and CP570 deliver sharper, more defined fish targets and automatically filter out unwanted noise so you never miss the action below.

- TruZoom™ magnification mode reveals extra target detail without any loss of resolution
- The CP570's ultra-fast ping rate processing delivers accurate bottom tracking in extreme offshore conditions

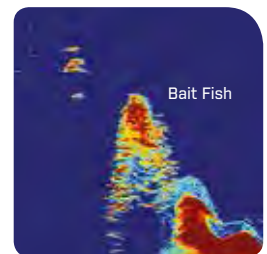
## EASY TO CUSTOMIZE

Choose optional low, medium, and high CHIRP frequency transducers in standard or wide-beam to match your fishing preferences.

- CP470 and CP570 automatically recognize connected transducers and adjust sonar parameters for optimized performance
- View and control each CHIRP channel independently and create your own combination of full or split screen sonar windows on Raymarine's LightHouse II powered multifunction displays

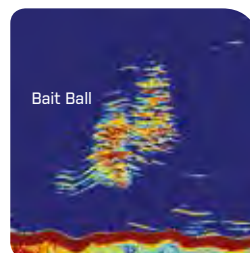
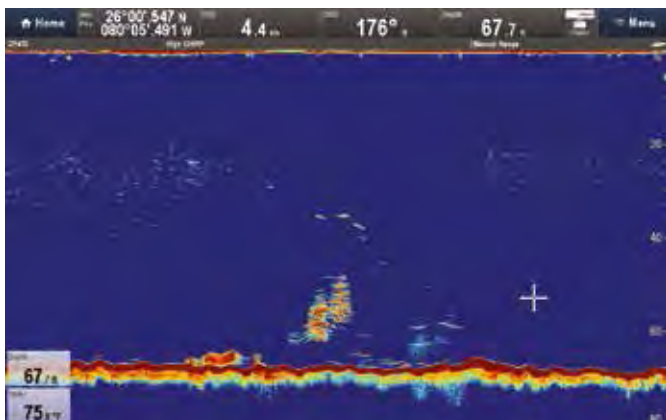


Wreck

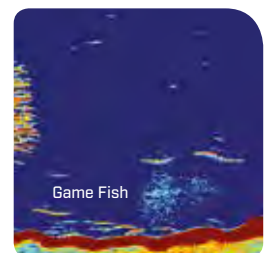


Bait Fish

CHIRP image showing a wreck surrounded by bait fish



Bait Ball



Game Fish

CHIRP image of a bait ball with game fish

# CP370/CP470/CP570 COMPARISON TABLES

Compare key features and applications so you can choose the right sonar module for your fishing requirements.



	<b>CP370</b>
Recommended for	Coastal Fishing
<b>SONAR PERFORMANCE</b>	
Sonar Type	Digital
Power	600W/1kW depending on transducer
Frequency and channels	Fixed frequency 50Khz and 200kHz channels
Depth Range	5000ft (1,500m)
<b>FEATURES</b>	
ClearPulse™ automatic noise filtering and auto sensitivity control	Yes
Standard Zoom	Yes
TruZoom™	No
Automatic transducer identification with Airmar Xducer ID	No
Airmar Wide Beam transducer compatible	No
Physical	IPX6 waterproof
Compatibility	E-Classic / C-Widescreen / E-Widescreen / aSeries cSeries / eSeries / gS Series
Nominal Supply Voltage	12/24 V dc
Power Consumption	30.6W (Maximum)
Connections	Power connection Network connection (RayNet connector) 10/100 Mb/s Transducer connection
Weight	3.16lbs (1.435kg)



<b>CP470</b>
Coastal and Offshore Fishing
Wide Spectrum CHIRP
1kW/2kW depending on transducer
Dual CHIRP from 25 to 250kHz
10,000ft (3,000m)
Yes
No
Yes. TruZoom provides magnified views of fish targets, bottom structure, and baitfish without loss of resolution as seen by traditional sonar
Yes
Yes
IPX6 waterproof
aSeries / cSeries / eSeries / gS Series
12/24 V dc
30.6W (Maximum)
Power connection Network connection (RayNet connector) 10/100 Mb/s Transducer connection
3.39lbs (1.539 kg)

<b>CP570</b>
Professional and tournament fishing
Wide Spectrum CHIRP
Max 4kW output using 2 independent CHIRP channels
Dual independent CHIRP channels from 25 to 250kHz
10,000ft (3,000m)
Yes
No
Yes. TruZoom provides magnified views of fish targets, bottom structure, and baitfish without loss of resolution as seen by traditional sonar
Yes
Yes
IPX6 waterproof rugged aluminum enclosure
aSeries / cSeries / eSeries / gS Series
12/24 V dc
30.6W (Maximum)
Power connection Network connection (RayNet connector) 10/100 Mb/s Transducer connection
13.9lbs (6.35kg)

# CP370/CP470/CP570 TRANSDUCERS

## DIGITAL AND CHIRP COMPATIBLE TRANSDUCERS

For details of compatible transom, in-hull and through-hull transducers, visit us on line at [raymarine.com](http://raymarine.com)



In-Hull

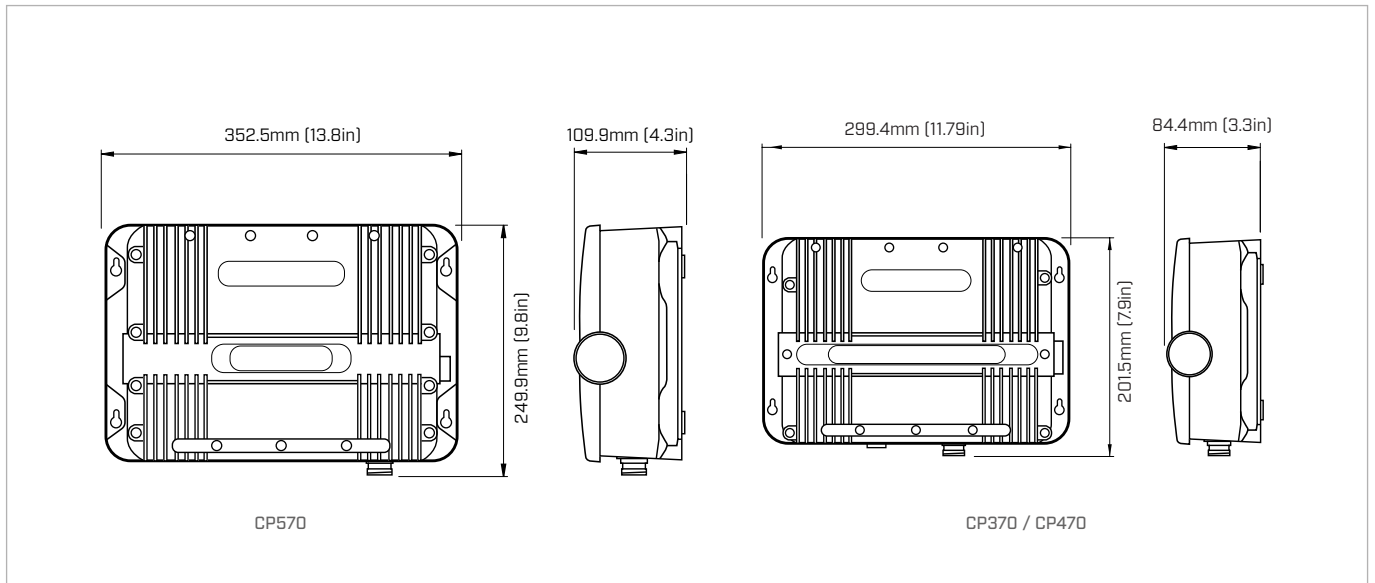
Transom Mount

Wide Beam CHIRP Compatible

Low Profile Through Hull

Through Hull

## DIMENSIONAL DRAWINGS



**RAYMARINE BELGIUM Bvba**  
 Luxemburgstraat 2  
 2321 Meer  
 Belgium  
 T: +32 (0) 3665 5162

**RAYMARINE UK LIMITED**  
 Marine House  
 Cartwright Drive  
 Fareham  
 PO15 5RJ  
 UK  
 T: (+44) (0)1329 246 700  
[www.raymarine.com](http://www.raymarine.com)

**CONTENT NOTE**  
 The technical and graphical information contained in this brochure, to the best of our knowledge, was correct as it went to press. However, the Raymarine policy of continuous improvement and updating may change product specifications without prior notice. Therefore, unavoidable differences between the product and this brochure may occur from time to time, for which liability cannot be accepted by Raymarine.

**PHOTOGRAPHY**  
 Lifestyle photography supplied courtesy of: Adrian Grey; Billy Black;  
 Boston Whaler; Onne Van der Wal; Regulator Boats;

Some images in this brochure are used for illustration purposes only.