

SR-L SERIES MARINE | SPREADER

The new RIGID SR-L Series Spreader light provides an easy way to add convenient area lighting and style to any vehicle. This spreader provides a broad 120° beam pattern to illuminate wide areas around any vehicle. The SR-L Series Spreader also offers stylish halo backlighting to provide accent lighting that adds a custom look to any vehicle. The halo backlighting is available in one of three colors: red, blue, or white. Use the flying leads wiring to wire the SR-L Series Spreader light directly into your vehicle's electrical system. The SR-L Series Spreader offers the same legendary RIGID build quality as the rest of RIGID's products, from the high-grade aluminum housing to the impact resistant polycarbonate lens. Packed with power and style, the SR-L Series makes it easier than ever to Own the Night.

FEATURES

Corrosion Protection

Marine grade polyester based powder coat with alodine pre-treat
 316 stainless steel mount hardware & brackets with plastic isolation bushings
 Universal fit - flush mount and surface mount

Performance Specifications

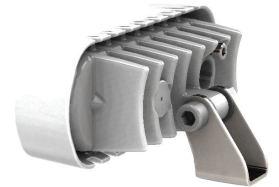
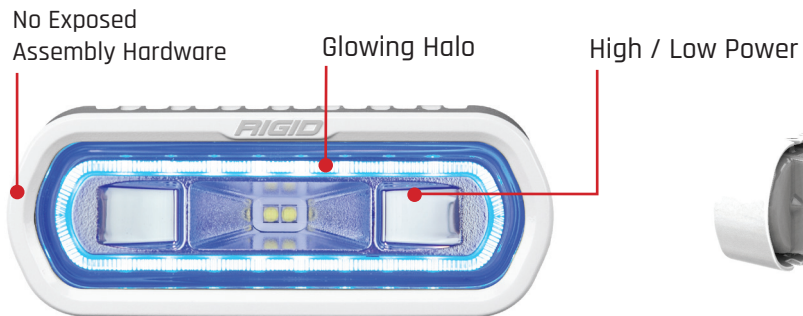
2-Wire Input with Switch Logic to toggle between modes
 High Power, Low Power and Accent Light modes
 Accent light can be used for low level ambient lighting
 Forward projecting light is great for area/deck lighting

POWER DRAW High = 14W Low = 3W Accent = 1W

RAW LUMENS High = 1,452 Low = 476 Accent = 31

AVAILABLE ACCENT COLORS RED, WHITE, AND BLUE

AVAILABLE IN
FLUSH AND SURFACE MOUNT



DIMENSIONS

