

**SIMRAD®**



# NSX™

Smart Chartplotter & Fishfinder

[simrad-yachting.com/nsx](http://simrad-yachting.com/nsx)





## REDEFINE ADVENTURE

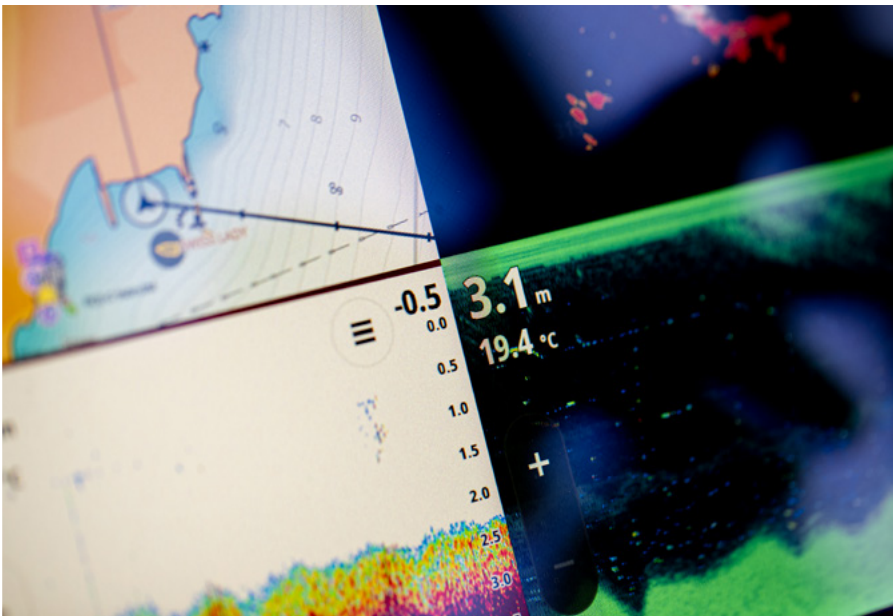
With an innovative, modern interface featuring powerful navigation capability with C-MAP® support, you'll see everything like never before.

The NSX features integrated Sonar, full Radar and Autopilot systems compatibility, and with our handy Setup Wizard tool you'll be up and running in no time.

All you need to do now is choose your next adventure.

[FIND OUT MORE](#)









### **A New, Intuitive TouchScreen Experience.**

Easily access all NSX™ features via a modern and simple interface, including drag-and-drop screen customization and enhanced day and night modes. Get crystal clear views of chart detail with the vibrant SolarMAX™ IPS touch screen - viewable from any angle, in direct sunlight and even through polarized lenses.



### **Bring Navigation to Life with NSX.**

See map details in a new way with next-generation C-MAP® DISCOVER™ X and REVEAL™ X marine-optimized charts for day and night. Experience our fastest-ever Autorouting and with the Simrad® Companion App plan trips, review Tracks, plot Waypoints and sync directly.



### **Full Suite of Simrad® Technology at Your Fingertips.**

Expand your system with advanced Simrad® technology. Experience high-resolution imagery from state-of-the-art sonar technology, like Active Imaging™, as well as compatibility with a wide range of 1 kW transducers. Identify hazards immediately and see near and far simultaneously with award-winning pulse compression HALO® radars, and stay on course with legendary Simrad® Autopilots.



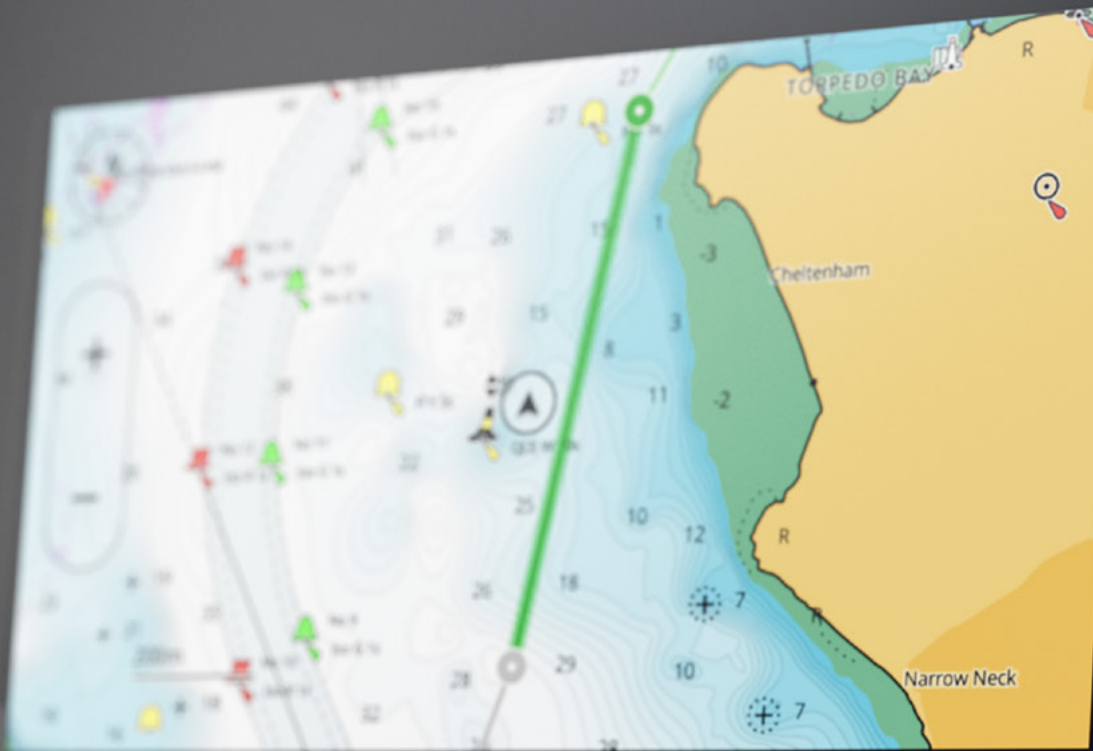
### **Simple to Set Up, Easy to Manage.**

Get up and running quicker than ever. Our new Setup Wizard features step-by-step instructions and guidance throughout your initial setup and with future adjustments. In addition, Sonar Device Setup provides easy-to-understand prompts for each step of the process, while the Simrad® App allows access to the best planning tools and hassle-free software updates and data transfer.

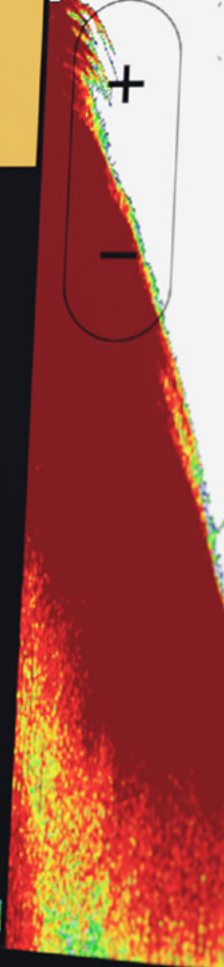
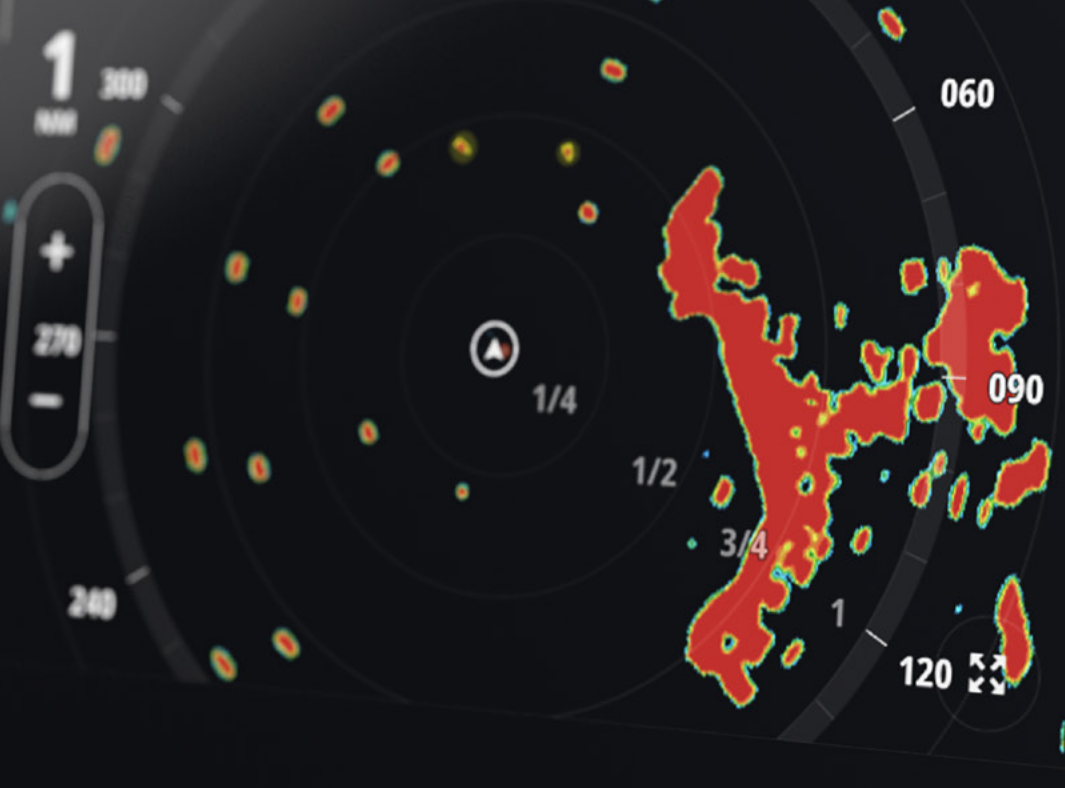
# SIMRAD



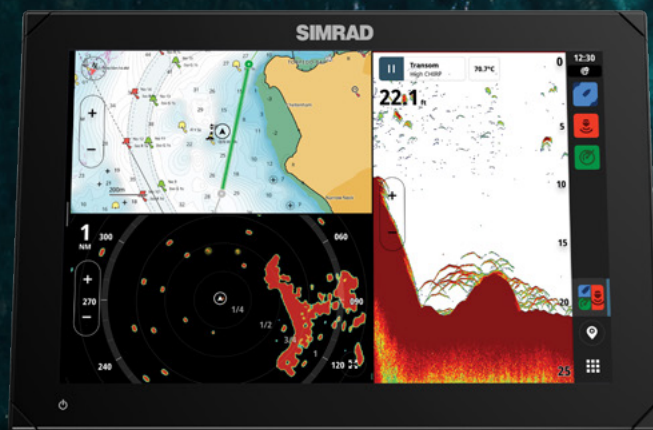
# SIMRAD



22.1





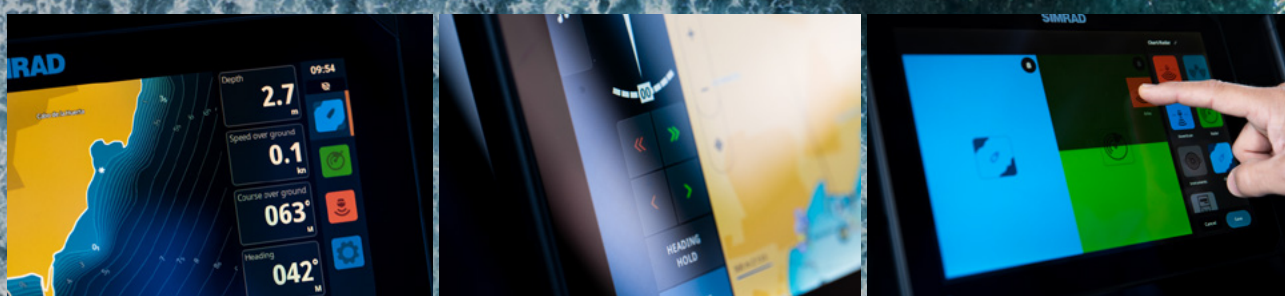


## A NEW, INTUITIVE TOUCH SCREEN EXPERIENCE

NSX™ pairs a clean and straightforward interface with high-definition visuals to deliver a whole new experience.

Easily access and use all NSX features, including smart drag-and-drop screen customization, fully editable instruments bar and enhanced day and night modes. Get crystal clear views of chart detail, structure and bottom contours with the vibrant SolarMAX™ IPS touchscreen.

The high definition display is viewable from any angle, in direct sunlight, and through polarised lenses with complete touchscreen operation.







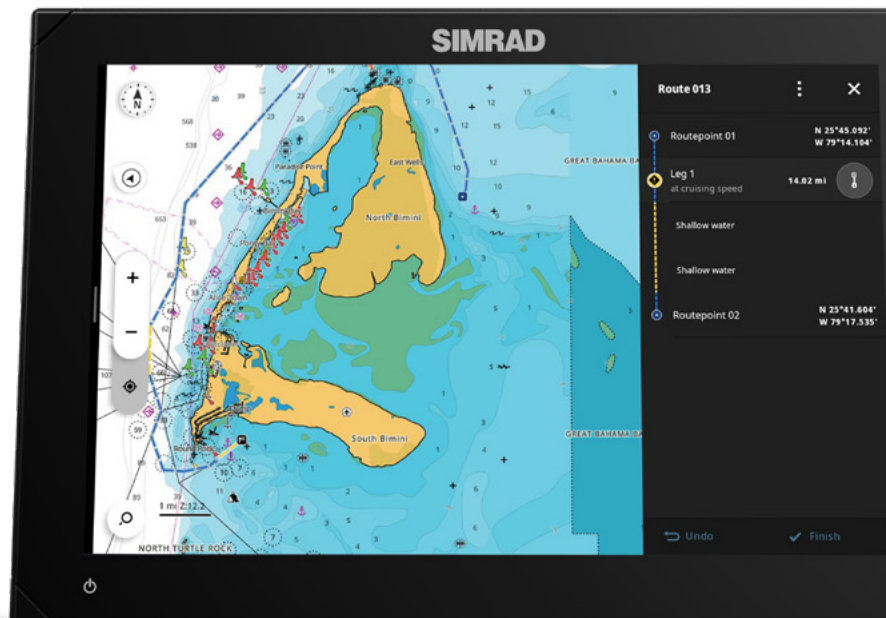
## BRING NAVIGATION TO LIFE WITH NSX

See map details in a new way. This includes support for next-generation C-MAP® DISCOVER™ X and REVEAL™ X marine-optimized charts developed for NSX, featuring a fresh, intuitive chart presentation and the latest updates.

C-MAP® charts include full-featured Vector Charts with Custom Depth Shading and High Resolution Bathymetry showing accurate contour lines down to a 1-foot level of detail.

Total navigation on or off the water. You can improve planning and route plotting with Tides and Currents projections and our fastest ever Autorouting. Plus, there's a new Map Inspection feature with one-touch access to information on locations, POIs, tides, channels and more.

The Simrad® Companion App acts like an extension of your NSX with the same chart experiences and all your chart data at your fingertips, on or off the water. The app lets you plan trips, review Tracks and plot Waypoints on your App and sync directly to your NSX.





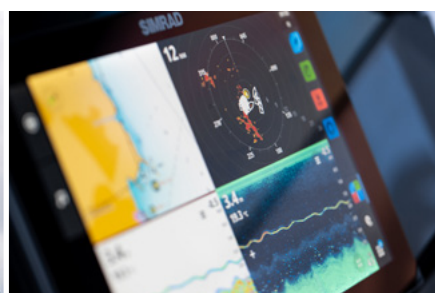
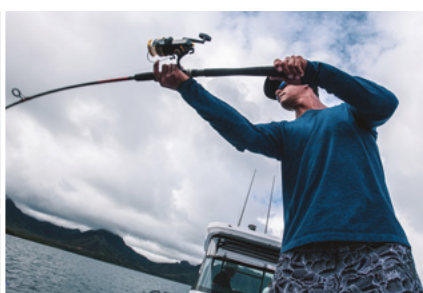


## FULL SUITE OF SIMRAD® TECHNOLOGY AT YOUR FINGERTIPS

Expand your system with advanced Simrad® technology. Get high resolution images below and to the sides of your vessel with Active Imaging™ and CHIRP sonar, SideScan/DownScan Imaging™ and FishReveal™ or search even greater depths with a wide range of compatible 1 kW transducers

Identify hazards immediately and see near and far simultaneously with our instant-on, award-winning pulse compression HALO® radars.

Available for outboard and inboard engines, our legendary autopilots act as an extra pair of hands helping run patterns and routes, navigate to a waypoint, and stay on course by automatically making adjustments to compensate for the wind and tide.







## SIMPLE TO SET UP, EASY TO MANAGE

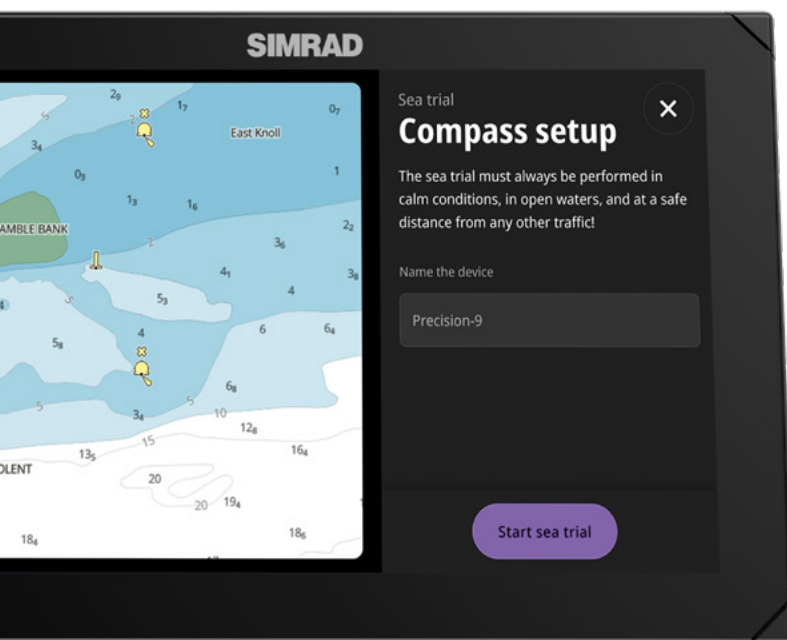
With everything from a Setup Wizard to Simrad® App integration, NSX makes life on the water easier than ever before.

The Setup Wizard helps with step-by-step instructions to get you up and running quickly, while the Simrad® App offers a whole host of added extras. You'll be up and running in no time.

These include hassle-free software updates, on and off the water trip planning, a streamlined chart display that looks the same across all platforms, plus easy transfer of all data, including routes and waypoints.

Sonar hints offer guidance on what's happening during settings adjustments and sonar device setup gives you easy-to-understand prompts for each step of the process.

All you need to do now is choose your next adventure.







### **Innovative Display sizes.**

Smart industrial design has enabled better screen size solutions. Get more screen for the overall size of your product and more flexibility to arrange your dash layout - multiple screen configurations in a smaller space or larger screens in an existing space.



### **Networking and Connectivity solutions.**

NMEA 2000® compliant and featuring a USB port enabling modem plug-in for additional connectivity to devices. Also features an ethernet port future-proofing NSX™ for full networking in the future.



### **Extensive 3rd party App integration (HTML5).**

Diversity of integration (supporting multiple vendors) and leading response performance across 3rd party applications delivers real benefits to customers - supply chain flexibility and vendor choice.



### **Simplified Onboarding experience.**

Start-up screen layout and graphics have a modern familiarity about them, while the boat network setup monitor provides full visibility of onboard device status.

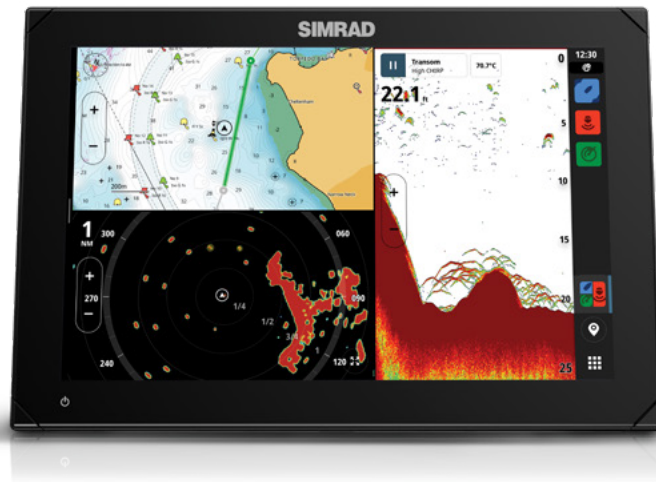
The Setup Wizard will prompt the user with details of what they still need to do with rich graphic guides on how to do it. This self-help empowerment delivers a major benefit to our end-users and partners alike by reducing the need to call service centres.



# NEW OPERATING SYSTEM MADE WITH BOATING IN MIND

**Take your experience to a whole new level.**

Our brand new operating system has been redesigned from the ground up, for boaters by boaters. Offering a redefined interface that's faster, simpler and easier to navigate, it boasts new security features and an easy-to-use user interface, ensuring the complexity that has been known in the marine industry is demystified.



It also has full support and connectivity across a range of existing sonar, radar, autopilots, digital switching and more. Developed on Android™<sup>1</sup>, it will allow Simrad® to develop features and functionality in an agile way, which will not only improve consumer experience but also speed up the development process - enabling faster feature development and more frequent releases. It will also offer opportunities for partners and third parties to easily create new applications and experiences for Simrad® products in the future.

[LEARN MORE](#)





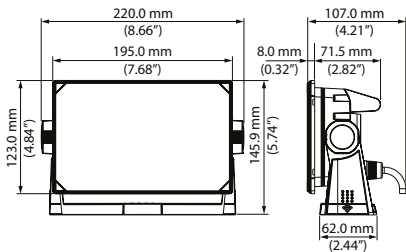


# SPECIFICATIONS

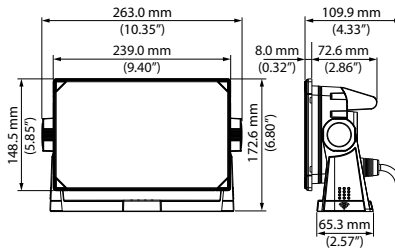
	NSX3007	NSX3009	NSX3012
Design	All Touch Model	All Touch Model	All Touch Model
Screen Size	7inch	9inch	12inch
Screen Resolution	1024x600	1280x720	1280 x 800
Screen Brightness	1200 nits	1200 nits	1200 nits
Sonar Power	1kW	1kW	1kW
CHIRP Sonar Frequencies	High/Medium/Low	High/Medium/Low	High/Medium/Low
Imaging Sonar	Side/Down/Active Imaging	Side/Down/Active Imaging	Side/Down/Active Imaging
Power Supply Voltage	12V	12V	12V
Networking	NMEA 2000®, Wireless & Ethernet	NMEA 2000®, Wireless & Ethernet	NMEA 2000®, Wireless & Ethernet
Charting	Basemap included C-MAP® DISCOVER™ X Compatible* C-MAP® REVEAL™ X Compatible*	Basemap included C-MAP® DISCOVER™ X Compatible* C-MAP® REVEAL™ Compatible*	Basemap included C-MAP® DISCOVER™ X Compatible* C-MAP® REVEAL™ Compatible*
Video	IP Video Support	IP Video Support	IP Video Support
Companion App	Simrad® Companion App for Planning/ Backup of Waypoints & Routes, Software Updates, Chart Updates	Simrad® Companion App for Planning/ Backup of Waypoints & Routes, Software Updates, Chart Updates	Simrad® Companion App for Planning/ Backup of Waypoints & Routes, Software Updates, Chart Updates
Mounting	Flexible options include Front, Flush and Flat as well as Bracket Mounts	Flexible options include Front, Flush and Flat as well as Bracket Mounts	Flexible options include Front, Flush and Flat as well as Bracket Mounts

\*For US + Canada and certain Aus + NZ models a DISCOVER X chart card is included.

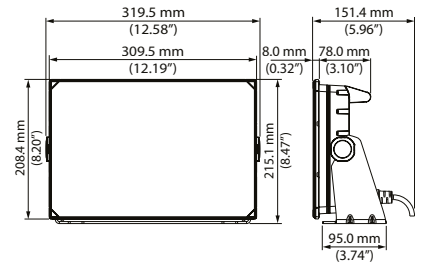
**NSX3007**



**NSX3009**



**NSX3012**



## SKU'S AND PART NUMBERS

SKU	NSX3007
000-15214-001	SIMRAD NSX 3007 NO TXDR AMER
000-15362-001	SIMRAD NSX 3007 BB SKU NO TXDR AMER
000-15365-001	SIMRAD NSX 3007 AI TXDR AMER
000-15371-001	SIMRAD NSX 3007 M/H HDI TXDR AMER
000-15215-001	SIMRAD NSX 3007 NO TXDR ROW
000-15374-001	SIMRAD NSX 3007 M/H HDI TXDR ROW
000-15379-001	SIMRAD NSX 3007 AI TXDR + AUS/NZ CHART
000-15368-001	SIMRAD NSX 3007 AI TXDR ROW
SKU	NSX3009
000-15218-001	SIMRAD NSX 3009 NO TXDR AMER
000-15363-001	SIMRAD NSX 3009 BB SKU NO TXDR AMER
000-15366-001	SIMRAD NSX 3009 AI TXDR AMER
000-15372-001	SIMRAD NSX 3009 M/H HDI TXDR AMER
000-15219-001	SIMRAD NSX 3009 NO TXDR ROW
000-15375-001	SIMRAD NSX 3009 M/H HDI TXDR ROW
000-15380-001	SIMRAD NSX 3009 AI TXDR + AUS/NZ CHART
000-15369-001	SIMRAD NSX 3009 AI TXDR ROW
SKU	NSX3012
000-15222-001	SIMRAD NSX 3012 NO TXDR AMER
000-15364-001	SIMRAD NSX 3012 BB SKU NO TXDR AMER
000-15367-001	SIMRAD NSX 3012 AI TXDR AMER
000-15223-001	SIMRAD NSX 3012 NO TXDR ROW
000-15381-001	SIMRAD NSX 3012 AI TXDR + AUS/NZ CHART
000-15370-001	SIMRAD NSX 3012 AI TXDR ROW
SKU	Accessories
000-15816-001	Simrad NSX 3007 Suncover Accessory
000-15817-001	Simrad NSX 3009 Suncover Accessory
000-15818-001	Simrad NSX 3012 Suncover Accessory
000-15822-001	NSX, Corner Clip Accessory
000-15823-001	NSX, 7" Dash Mount Kit
000-15824-001	NSX, 9" Dash Mount Kit
000-15825-001	NSX, 12" Dash Mount Kit



**SIMRAD<sup>®</sup>**



[simrad-yachting.com/nsx](https://simrad-yachting.com/nsx)