

The SIMRAD logo consists of the word "SIMRAD" in white, bold, uppercase letters, set against a red rectangular background. The registered trademark symbol (®) is located at the top right of the red box.

SIMRAD®

A solid blue vertical bar is positioned to the left of the main title text.

NAC™ -D

Commissioning Manual

ENGLISH

Preface

Disclaimer

As Navico is continuously improving this product, we retain the right to make changes to the product at any time which may not be reflected in this version of the manual. Please contact your nearest distributor if you require any further assistance.

It is the owner's sole responsibility to install and use the equipment in a manner that will not cause accidents, personal injury or property damage. The user of this product is solely responsible for observing maritime safety practices.

NAVICO HOLDING AS AND ITS SUBSIDIARIES, BRANCHES AND AFFILIATES DISCLAIM ALL LIABILITY FOR ANY USE OF THIS PRODUCT IN A WAY THAT MAY CAUSE ACCIDENTS, DAMAGE OR THAT MAY VIOLATE THE LAW.

This manual represents the product as at the time of printing. Navico Holding AS and its subsidiaries, branches and affiliates reserve the right to make changes to specifications without notice.

Governing language

This statement, any instruction manuals, user guides and other information relating to the product (Documentation) may be translated to, or has been translated from, another language (Translation). In the event of any conflict between any Translation of the Documentation, the English language version of the Documentation will be the official version of the Documentation.

Trademarks

®Reg. U.S. Pat. & Tm. Off, and ™ common law marks. Visit www.navico.com/intellectual-property to review the global trademark rights and accreditations for Navico Holding AS and other entities.

- Navico® is a registered trademark of Navico Holding AS.
- SIMRAD® is a trademark of Kongsberg Maritime AS, Licensed to Navico Holding AS.
- NMEA® and NMEA 2000® are registered trademarks of the National Marine Electronics Association.
- NAC™
- AP™

Copyright

Copyright © 2020 Navico Holding AS.

Warranty

The warranty card is supplied as a separate document. In case of any queries, refer to the brand website of your unit or system:

www.simrad-yachting.com

Compliance statements

Declarations

The relevant declarations of conformity are available at:
www.simrad-yachting.com

Europe

Navico declare under our sole responsibility that the product conforms with the requirements of:

- CE under EMC Directive 2014/30/EU

United States of America

⚠ Warning: The user is cautioned that any changes or modifications not expressly approved by the party responsible for compliance could void the user's authority to operate the equipment.

Australia and New Zealand

Navico declare under our sole responsibility that the product conforms with the requirements of:

- level 2 devices of the Radiocommunications (Electromagnetic Compatibility) standard 2017

Trademarks

®Reg. U.S. Pat. & Tm. Off, and ™ common law marks. Visit www.navico.com/intellectual-property to review the global trademark rights and accreditations for Navico Holding AS and other entities.

- Navico® is a registered trademark of Navico Holding AS.
- SIMRAD® is a trademark of Kongsberg Maritime AS, Licensed to Navico Holding AS.
- NMEA® and NMEA 2000® are registered trademarks of the National Marine Electronics Association.

- NAC™
- AP™

About this manual

Images used in this manual might not exactly match the screen on your unit.

Important text conventions

Important text that requires special attention from the reader is emphasized as follows:

→ **Note:** Used to draw the reader's attention to a comment or some important information.

⚠ **Warning:** Used when it is necessary to warn personnel that they should proceed carefully to prevent risk of injury and/or damage to equipment/personnel.

Translated manuals

Available translated versions of this manual can be found on the following website:

- www.simrad-yachting.com

Contents

- 9 Introduction**
 - 9 NAC-D autopilot computer
 - 9 Autopilot controllers
 - 9 Autopilot computer setup

- 12 Dockside setup**
 - 12 Data source selection
 - 12 Override function
 - 13 Boat characteristics
 - 14 Drive configuration
 - 15 Rudder setup

- 16 Sea trial**
 - 16 Compass setup
 - 17 Transition speed
 - 18 Set turn rate
 - 18 Tuning the autopilot

- 23 User settings**
 - 23 Steering profile settings
 - 24 Turn pattern settings

- 28 Installation verification**
 - 28 Checklist
 - 28 Boat specific settings

- 31 Maintenance**
 - 31 Preventive maintenance
 - 31 Checking the connectors
 - 31 Software update
 - 31 Resetting the autopilot computer

1

Introduction

NAC-D autopilot computer

NAC-D is the Autopilot computer to supported EVC steering systems.

Autopilot controllers

The NAC can be controlled by various Simrad control units. This can be dedicated autopilot controllers, Multifunction displays (MFDs) and autopilot remote controllers used in combination with instrument systems, or any combination of the above.

Autopilot functions

The autopilot computer supports a large range of automatic steering modes. Not all autopilot controllers have access to all options. E.g. autopilot systems including only an autopilot remote controller (without display) do not have access to turn patterns.

The user interface

The autopilot functions are presented slightly different on the different displays.

This manual shows screen examples from both MFDs and AP48.

Autopilot computer setup

When the autopilot installation is completed, the setup of the autopilot computer must be performed. Failure in setting up the autopilot correctly may prohibit the autopilot from functioning properly.

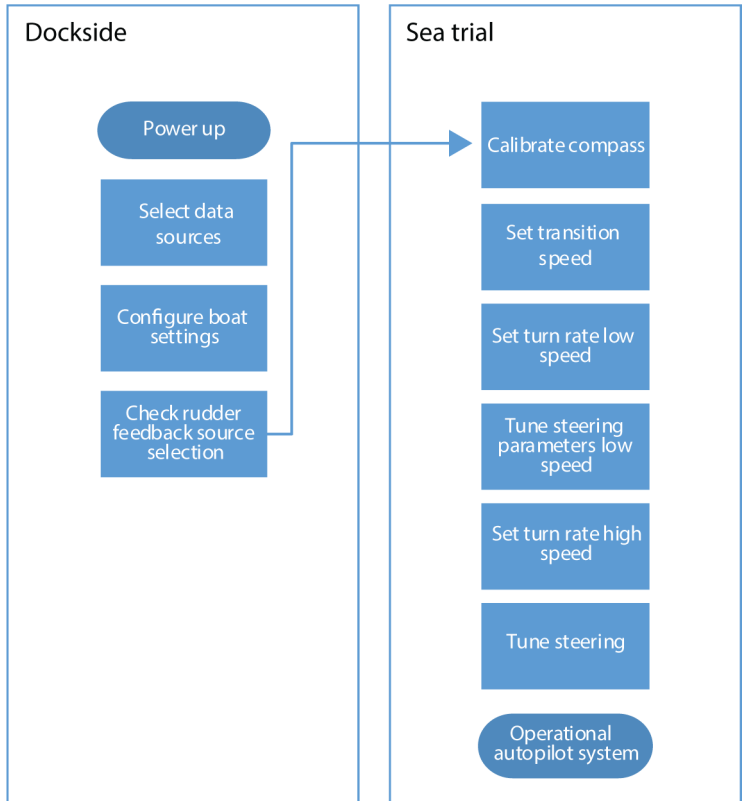
The setup of the autopilot computer is divided in two main steps:

- Installation settings
 - Including dockside and seatrial commissioning. See "*Dockside setup*" on page 12 and "*Sea trial*" on page 16
- User adjustment of autopilot settings
 - Manual fine-tuning for various operational conditions and user preferences. See "*User settings*" on page 23

- **Note:** Dockside settings can only be accessed when the autopilot is in Standby mode.
- **Note:** Some systems require a dedicated physical standby key to perform installation procedures. This key can be a key on the autopilot controller, on an autopilot remote controller, or it can be a separate standby key.

⚠ Warning: When the autopilot is delivered from factory and any time after an autopilot reset has been performed, the installation settings are all reset to factory preset (default) values. A notification will be displayed, and a complete setup has to be made. Failure to do so correctly may prohibit the autopilot from functioning properly!

Installation setup workflow



2

Dockside setup

Data source selection

Before commencing with autopilot computer setup the data sources must be available and configured.

Data sources selection is required on initial start-up of the system, if any part of the network has been changed or replaced, or if an alternative source is made available for a given data type and this source has not been selected automatically.

You can let the system automatically select your sources, or set up each source manually. Refer to documentation for the autopilot controller or for the display unit for details about how to perform the data source selection.

Override function

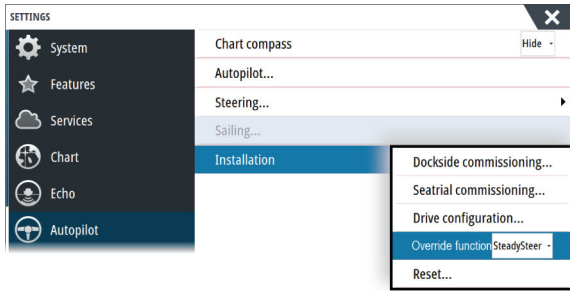
The SteadySteer feature allows you to control how the autopilot system reacts to manual steering.

When enabled:

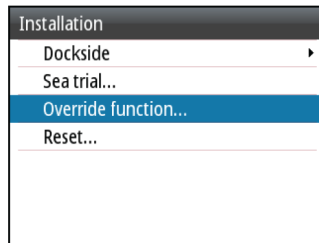
- Manual steering overrides the active mode.
- If Auto mode or NoDrift mode was active before going into manual steering, they will automatically re-engage when the vessel has stabilized on a new course.
- If NAV mode was active before going into manual steering a dialog will be shown.
 - Confirm course change to reactivate NAV mode.
 - Cancel the course change to activate Auto mode on the new heading.
 - If no action is taken the autopilot will go into Standby mode.
- For any other modes, the autopilot goes into Standby mode.

When disabled:

- Manual steering overrides the active mode.
- Independent of modes, the autopilot goes into Standby mode.



Autopilot installation dialog, MFDs



Autopilot installation dialog, AP48

Boat characteristics

Boat type

Affects steering parameters as well as available autopilot features.

The following options are available:

- Displacement
- Planing

Boat length

Used by the autopilot system to calculate steering parameters.

Cruising speed

Used if no speed info is available. It is used by the autopilot system to calculate steering parameters.

Drive configuration

The drive configuration controls how the autopilot computer operates the steering system.

Refer to your drive unit documentation for relevant specifications.

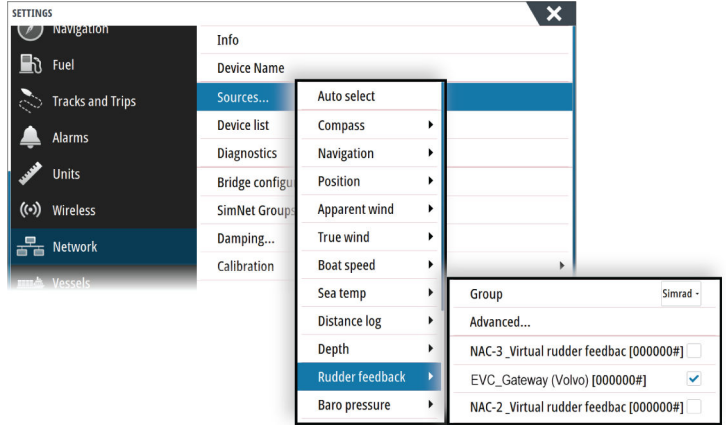
Minimum rudder

Some boats may have a tendency to not respond to small rudder commands around the “course keeping” position because of a small rudder, whirls/disturbance of the water-stream passing the rudder, or it is a single nozzle water jet boat. By increasing the Minimum rudder parameter you may improve the course keeping performance on some boats. However, this will increase the rudder activity.

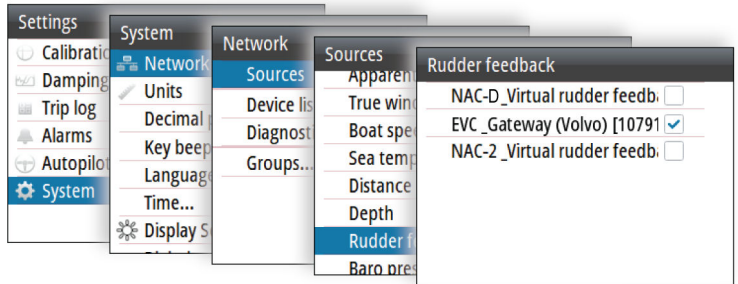
→ **Note:** Only set a value for minimum rudder if it proves to give a better course keeping performance in calm sea. It should be set after the autopilot steering parameters have been optimised/tuned.

Rudder setup

Selecting rudder source



Rudder source selection, MFDs



Rudder source selection, AP48

3

Sea trial

A sea trial can only be performed after the dockside settings are completed.

→ **Note:** The sea trial must always be performed in calm conditions, in open waters and at a safe distance from other traffic.

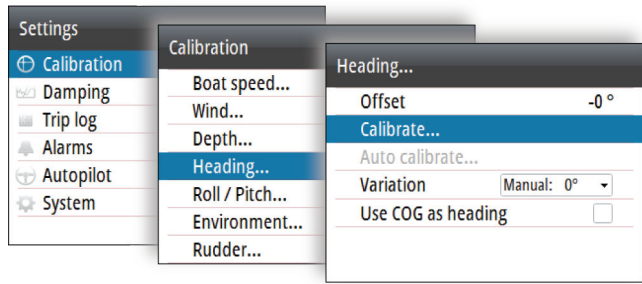
Compass setup

To achieve the best possible performance, the compass should be calibrated, and any offsets should be compensated for.

The setup needs to be done from an appropriate display unit. Depending on the unit, access to the compass setup is available from the compass's device dialog, or from a dedicated Calibration option in the unit's Settings menu.



Device dialog, MFDs



Calibration option, AP48

→ **Note:** The setup of the compass should be done in calm sea conditions and with minimal wind and current to obtain good results. Ensure that there is enough open water around the vessel to make a full turn.

Refer to your heading sensor's documentation for further details for your unit.

Transition speed

→ **Note:** Only available if the boat type is set to Planing.

The transition speed is the speed at which the system automatically changes between **Low** speed and **High** speed profiles.

The profiles are used to accommodate the boats' tendency to exhibit different steering characteristics at different speeds. You may also have different preferences about the steering performance of your boat required at low and high speeds.

It is recommended that you set a value that represents the speed where the boat's steering characteristics change. For instance the planing threshold (recommended), or at the speed you want the autopilot to change behavior.

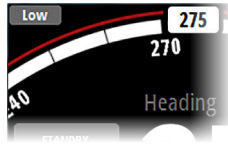
There is a 2 knots hysteresis to prevent oscillation of high/low settings when the vessel is travelling at or near the transition speed.

Example

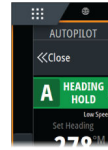
The transition speed is set to 9 knots.

- The system changes from Low profile to High profile when the speed increases to 10 knots (= Transition speed plus 1 knot)

- The system changes from High profile to Low profile when the speed decreases to 8 knots (= Transition speed minus 1 knot)



AP48 page



MFD Autopilot control bar

Set turn rate

Used for setting the preferred turn rate of the boat.

Bring the boat into a turn with the preferred safe and comfortable turn rate, then activate the **Set turn rate** option to save the turn rate parameters.

- **Note:** The captured turn rate will be stored in the active steering profile. This setting must therefore be repeated for each steering profile.

Tuning the autopilot

- **Note:** Tuning of the autopilot must be done separately for low and high speed profiles.

Both Autotune and manual tuning should be performed in calm or moderate sea conditions.

Providing you have entered correct vessel type, length and cruising speed, you may not have to perform further manual or automatic tuning.

Proceed as follows to verify satisfactorily steering:

1. Stabilize the vessel on a heading, and then select **AUTO** mode
2. Observe course keeping and rudder commands
 - The autopilot should keep the vessel on the set heading within an average of +/-1 degree, providing calm sea and wind
3. Make some small and bigger heading changes to port and starboard and observe how the vessel settles on the new heading
 - The vessel should have a minimum of overshoot. See "*Rudder gain*" on page 20 and "*Counter rudder*" on page 21.

If the autopilot is not keeping the heading satisfactorily or not making the turns satisfactorily, you may now either try the Autotune function or go directly to manual tuning.

- **Note:** If the vessel is more than approximately 30 m/100 ft or has a very high cruising speed it may be unpractical to perform Autotune. It is then suggested to proceed with manual tuning.

Autotuning

When performing an autotune, the vessel will automatically be taken through a number of S-turns. Based on the vessel behavior, the autopilot will automatically set the most important steering parameters (Rudder gain and Counter rudder).

- Stabilize the vessel on a heading and set the speed between 5-10 kn, then select **Autotune**.
 - The autopilot will now switch to AUTO mode and take control of the vessel.
- **Note:** Autotuning can be stopped at any time by pressing the **STBY** key on the autopilot controller.

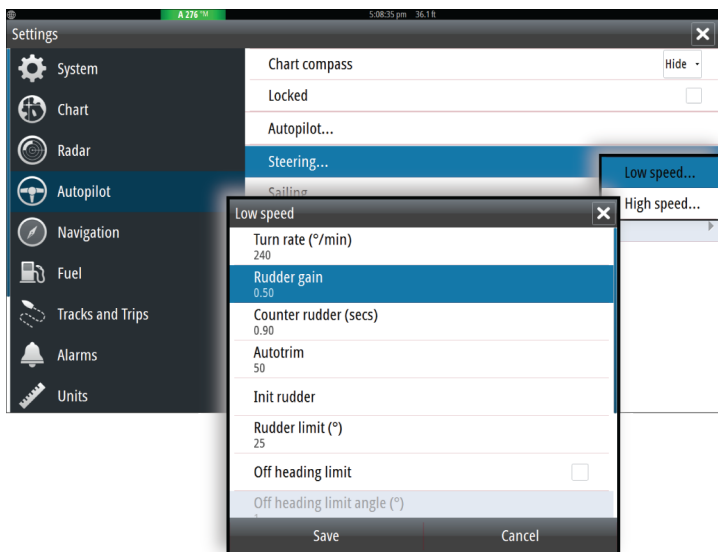
The autotuning takes approximately 3 minutes to complete. When completed the autopilot automatically switches to Standby mode, and the rudder must be controlled manually.

- **Note:** All parameters that are set during autotuning can be manually adjusted. For optimal steering performance it is recommended to manually adjust the steering parameters after running the autotune.

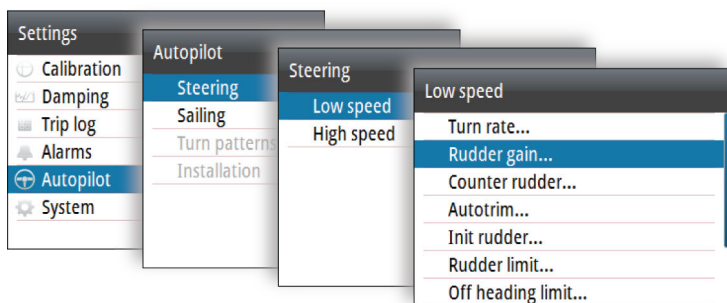
Manual tuning

Rudder gain and Counter rudder can be manually adjusted.

- Stabilize the vessel on a heading and set the speed in the middle of the profile range (well clear of the transition speed) to avoid profile switching during tuning. Then activate the **Rudder gain** option. Adjust the value according to the descriptions below.
- If required, adjust slightly the **Counter rudder** option.



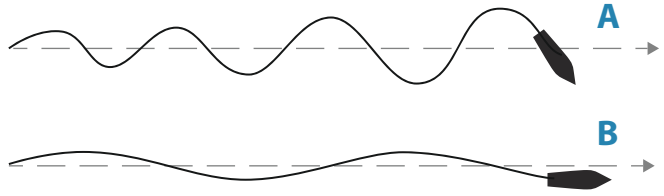
Tuning parameters, MFDs



Tuning parameters, AP48

Rudder gain

This parameter determines the ratio between commanded rudder and the heading error. The higher rudder gain value the more rudder is applied. If the value is too small it will take a long time to compensate for a heading error, and the autopilot will fail to keep a steady course. If the value is set too high the overshoot will increase and the steering will be unstable.



- A** The value is set too high. Steering becomes unstable and often the overshoot will increase
- B** The value is set too low. It will take a long time to compensate for a heading error, and the autopilot will fail to keep a steady course

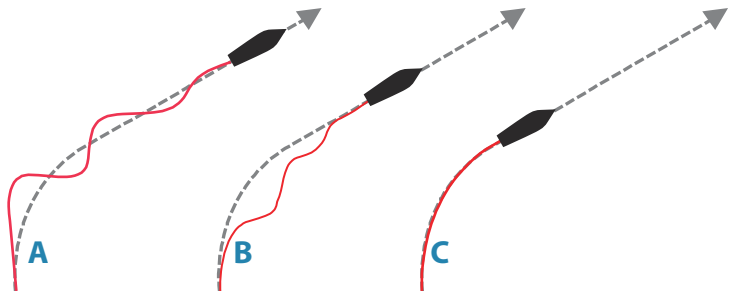
Counter rudder

Counter rudder is the amount of counteracting (opposite) rudder applied to stop the turn at the end of a major course change. The settings depend on vessel's characteristics, inertia, hull shape and rudder efficiency.

- If the vessel has good dynamic stability, a relatively small value will be sufficient
- An unstable vessel will require high value
- The greater the vessel's inertia, the greater value will be required

Increasing counter rudder value may result in some higher rudder activity also when steering a straight course, particularly in high waves.

The best way of checking the value of the Counter rudder setting is when making turns. The figures illustrate the effects of various Counter Rudder settings.



- A** Counter rudder value too low; overshoot response
- B** Counter rudder value is too high; sluggish and creeping response
- C** Correct setting of Counter rudder; ideal response

Perform various course changes and observe how the boat settles on the new heading. Start with small changes, 10-20 degrees, and proceed with bigger changes, 60-90 degrees. Adjust Counter rudder value to obtain best possible response as in illustration **C**.

→ **Note:** As many boats turn differently to port versus starboard (due to propeller rotation direction), do the course changes in both directions. You may end up with a compromise setting of Counter rudder that gives a little overshoot to one side and a bit creeping response to the other.

4

User settings

The user settings can be configured differently between the different profiles, depending on boat steering characteristics and user preferences.

Steering profile settings

The NAC include two steering profiles (High and Low), used for high and low boat speed.

The initial parameters are automatically assigned when you select your vessel type. During the seatrial the parameters will be tuned for optimized steering performance. See "*Tuning the autopilot*" on page 18.

The options listed in the next pages are available for both High and Low speed profiles.

For Rudder gain and Counter rudder, see "*Rudder gain*" on page 20 and "*Counter rudder*" on page 21.

Turn rate

Used for manually setting the turn rate used when the heading change is larger than 5°.

Autotrim

Controls how fast the autopilot will apply rudder to compensate for a constant heading offset, e.g. when external forces such as wind or current affects the heading. Lower autotrim will give faster elimination of a constant heading offset

Init rudder

Defines how the system moves the rudder when switching from hand steering (Standby, FU and NFU) to an automatic mode.

The following options are available:

- Center
Moves the rudder to zero position
- Actual
Maintains the rudder angle, and assumes that the current rudder angle is the trim required to maintain a steady heading.

Rudder limit

Determines the dynamic range of the rudder before its movement is restricted and alarm is triggered. Typical usage is to limit the amount of rudder action caused by yawing in following sea.

→ **Note:** Rudder limit is not a hard limitation of the rudder range, only around the current setpoint.

This Rudder limit does not affect Non-Follow-up or Follow Up steering.

Off heading limit angle

Sets the limit for the off heading alarm.

When the alarm option is activated an alarm occurs when the actual heading deviates from the set heading more than the selected limit.

Track response

Defines how aggressively the autopilot should steer towards the active route's leg.

Track approach angle

This setting is a limit to prevent approaching the track too steeply. Approaching the track at shallower angles is permitted depending on the cross track distance (XTD) and track response setting.

This setting is used both when you start navigating and whenever the autopilot is working the boat towards the route.

Course change confirm angle

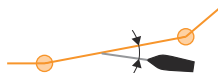
Defines the limit for automatic course change to next waypoint in a route when the autopilot is following a route (NAV mode).

If the course change is greater than this set limit, you are prompted to verify that the upcoming course change is acceptable.

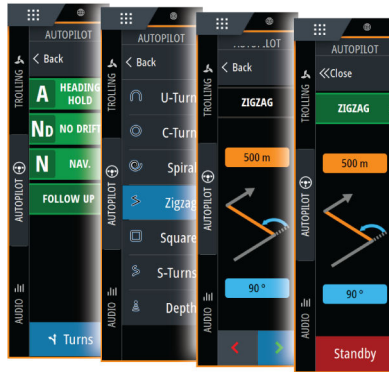
Turn pattern settings

The autopilot computer supports a number of automatic turn steering features when the autopilot is in AUTO mode.

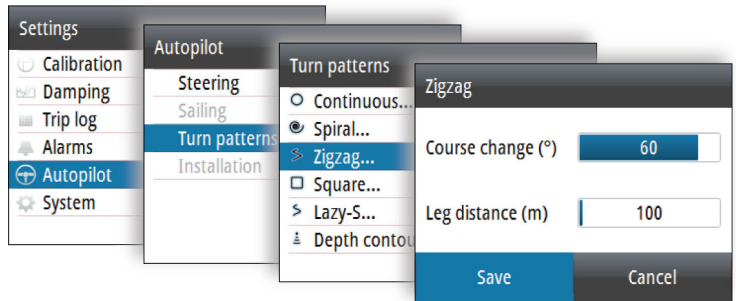
→ **Note:** Turn pattern steering is not available if the boat type is set to Sail.



All turn patterns, except the U-turn, have associated turn pattern settings. Depending on the autopilot controller these turn pattern settings can be adjusted before you start the turn or during the turn.



Turn pattern settings, MFD



Turn pattern settings, AP48

→ **Note:** Not all autopilot controllers include turn pattern steering. Refer to your autopilot controller for more information.

C-turn (Continuous turn)

Steers the vessel in a circle.

- Turn variable:
 - Rate of turn. Increasing the value makes the vessel turn a smaller circle.

U-turn

Changes the current set heading to be 180° in the opposite direction.

Spiral turn

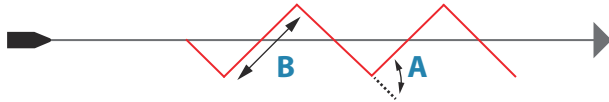
Makes the vessel turn in a spiral with a decreasing or increasing radius.

- Turn variables:
 - Initial radius
 - Change/turn. If this value is set to zero, the boat will turn in a circle. Negative values indicate decreasing radius while positive values indicate increasing radius.

Zigzag turn

Steers the vessel in a zigzag pattern.

- Turn variables:
 - Course change (**A**)
 - Leg distance (**B**)



Square turn

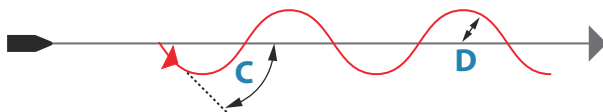
Makes the vessel automatically turn 90° after having travelled a defined leg distance.

- Turn variable:
 - Leg distance

S-turn

Makes the vessel yaw around the main heading.

- Turn variables:
 - Course change (**C**)
 - Turn radius (**D**)



Depth contour tracking (DCT)

Makes the autopilot follow a depth contour.

→ **Note:** DCT turn pattern is only available if the system has a valid depth input.

⚠ Warning: Do not use the DCT turn pattern unless the seabed is suitable. Do not use it in rocky waters where the depth is varying significantly over a small area.

- Turn variables:
 - Depth gain. This parameter determines the ratio between commanded rudder and the deviation from the selected depth contour. The higher depth gain value the more rudder is applied. If the value is too small it will take a long time to compensate for drifting off the set depth contour, and the autopilot will fail to keep the boat on the selected depth. If the value is set too high the overshoot will increase and the steering will be unstable.
 - CCA. The CCA is an angle that is added to or subtracted from the set course. With this parameter you can make the boat yaw around the reference depth with S movements. The larger the CCA the bigger yawing will be allowed. If the CCA is set to zero there is no S-ing.
 - Ref. depth. This is the reference depth for the DCT function. When DCT is initiated the autopilot reads the current depth and set this as the reference depth. The reference depth can be changed when the function is running.
- **Note:** If depth data is lost during DCT the autopilot will automatically switch to AUTO mode.
It is recommended to turn ON the AP Depth Data Missing alarm when using DCT. When this alarm is activated an alarm will be raised if the depth data is lost during DCT.

5

Installation verification

When all units in the autopilot system are installed, external equipment connected and the software configured according to the previous chapters, the installation should be verified according to the checklist. The boat specific settings should be noted down in the relevant tables included this chapter.

Checklist

Description	Reference
Units mounted and secured according to instructions	Installation instructions for the units
Network powered and terminated according to instructions	Wiring instructions for the units
Sources selected	Autopilot control unit documentation
Vessel configured	" <i>Boat characteristics</i> " on page 13
Drive units configured and calibrated	" <i>Drive configuration</i> " on page 14
Compass calibrated	" <i>Compass setup</i> " on page 16
Seatrial completed (manual or autotune)	" <i>Sea trial</i> " on page 16

Boat specific settings

Boat

Settings	
Boat type	
Boat length	
Cruising speed	
Transition speed	

Steering system

Settings	
Minimum rudder	

Steering profiles

Settings	Low Speed	High Speed
Turn Rate		
Rudder gain		
Counter rudder		
Autotrim		
Init rudder		
Rudder limit		
Off heading limit		
Track response		
Track approach angle		
Course change confirm angle		

Turn Pattern settings

Settings	
Continuous	
Rate of turn	
Spiral	
Initial radius	
Change/turn	
Zigzag	
Course change	

Settings	
	Leg distance
Square	
	Leg distance
Lazy-S	
	Course change
	Turn radius
Depth contour	
	Depth gain
	CCA

6

Maintenance

Preventive maintenance

The unit does not contain any field serviceable components. Therefore, the operator is required to perform only a very limited amount of preventative maintenance.

Checking the connectors

The connectors should be checked by visual inspection only. Push the connector plugs into the connector. If the connector plugs are equipped with a lock, ensure that it is in the correct position.

Software update

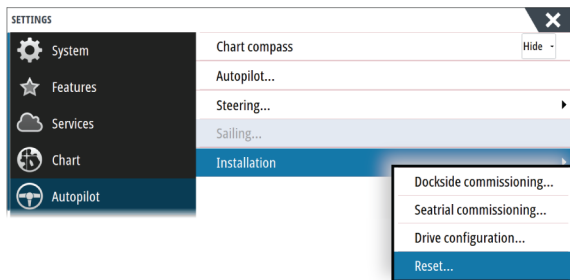
You can update the software for the autopilot computer from a display unit connected to the network.

You can check the autopilot computer's software version from the display unit's Device list.

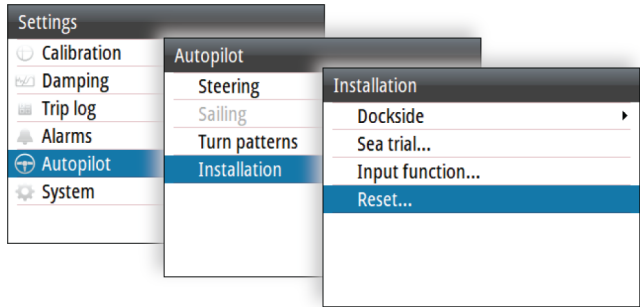
The latest software is available for download from the product website on www.simrad-yachting.com.

Resetting the autopilot computer

You can reset the autopilot to factory default settings.



Reset autopilot computer, MFDs



Reset autopilot computer, AP48

The first time the autopilot computer is started after reset, it will run through the automatic setup-procedure.

- **Note:** Unless you need to clear all values set during the installation set-up procedure, you should not perform a reset of the autopilot computer.

SIMRAD®

