



**NEW FOR 2022**



# NEW SHIFT SOUND & VIBRATION DAMPENING HYBRID HUB SYSTEM

## MORE QUIET MORE ENJOYABLE

**For 40CT-300+hp Applications Running Stainless Steel Propellers**  
 A solution for stainless steel props but works great with aluminum props as well  
 Great replacement for Yamaha® SDS™ and other brands



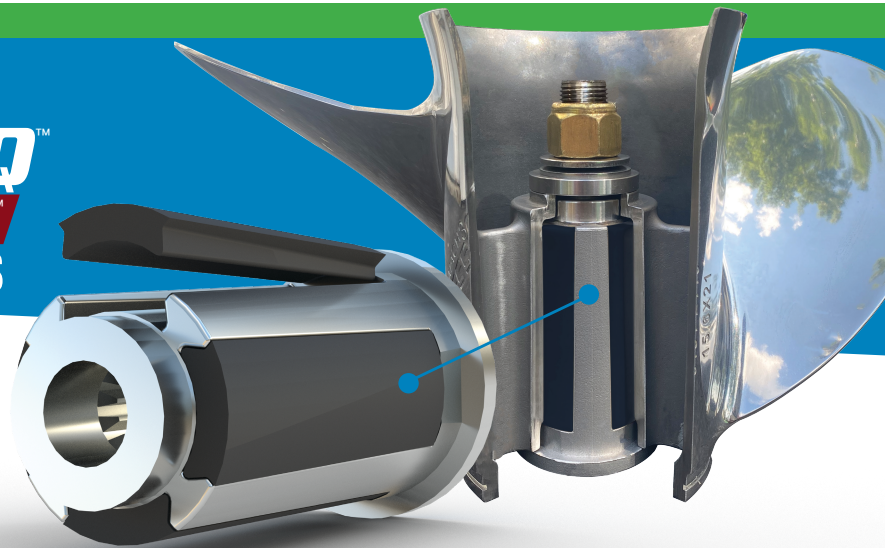
- Resolves an issue inherent in some outboard applications where noise at engine idle is transmitted throughout the lower unit caused by slack in the shift dog clutch assembly.
- More quiet more enjoyable - hybrid hub system.
- Shift sound & vibration dampening rubber material with Hub Isolation Technology.
- Reliable over time, not likely to let loose & spin under normal use.
- Offers more lower unit protection. Doesn't lock into a solid hub position.
- A solution for stainless steel propellers but works great with aluminum props too.
- Available Winter 2021/2022 Season



# NEW Hub System NEW Technology for Big Engines with Big Prop Shafts

**For Mercury® Applications with 1.25" Prop Shafts**

**150-400+hp with 4.75-5.44" Gearcases Running Stainless Steel Props**  
 A solution for stainless steel props but works great with aluminum props too  
 Great replacement for Flo-Torq® 1.25" HD Hubs and with other brands



- Dealers rigging Mercury® Verado® or ProXS® engines with larger prop shafts now have access to Turning Point Propellers' sought-after high performance Express stainless steel line of propellers (Hustler aluminum props are also compatible).
- New extreme duty design and fit.
- Can last a lifetime with low-cost replaceable cushioned material inserts.
- A more cost-effective solution vs OEM options currently in the market.
- Easy to install by hand, no hub press machine needed.
- 1 year material and workmanship warranty
- Available For The 2022 Season