


4 Checking/test running and configuring the control panels

4.1 General

The control panel (DBPPJA) is intended to be used in combination with a BOWPRO bow and stern thruster. You can expand the number of control panels to a maximum of four.

 **IMPORTANT**

Before using the system, perform the following:

- Check the thrust direction (see 4.4)
- Only with multiple steering positions: configure a control panel for each steering position (see 4.7)

4.2 Switching on a panel

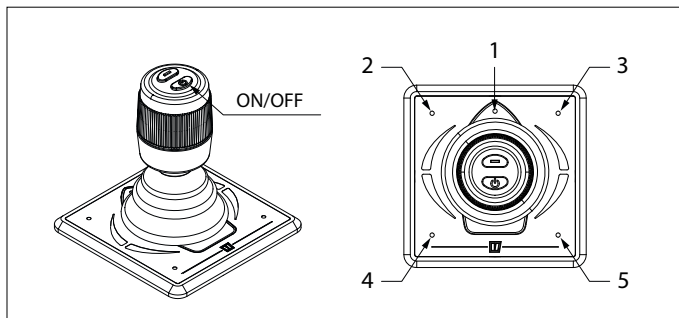
Switch on the main switch. The system is now in 'stand-by'.

- Press the "ON / OFF" button.

LED (1) (blue) will flash and you hear a repeating signal, di-di-di (...). The "ON / OFF" button must be pressed a second time within 6 seconds. The LED (1) will stay on and the buzzer will confirm that the panel is ready for use by giving the signal dahdidah (-.-).

If multiple panels are connected, LED (1) on the panels which have not been switched ON will flash (every second two short blue flashes, heartbeat)

To take over the control to another control panel, perform the above operations on the panel you want to activate.



4.3 Switching OFF a panel

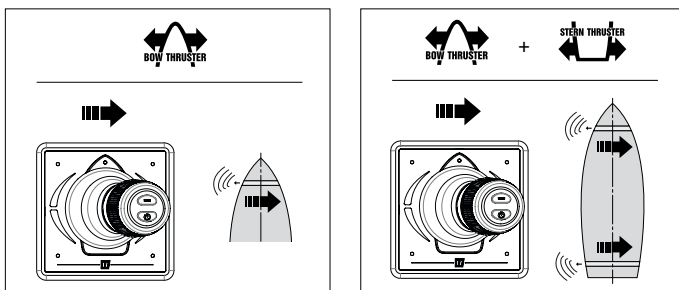
Keep pressing the "ON / OFF" button until all LEDs are off and you hear the signal, di-di-di-dah-dah (...-.-). The control panel is switched off.

- Turn off the battery main switch when leaving the boat.

4.4 Check thrust direction

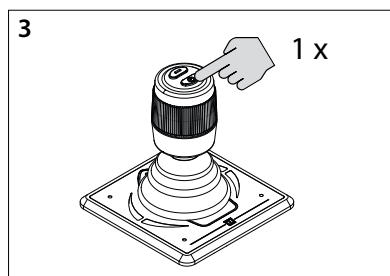
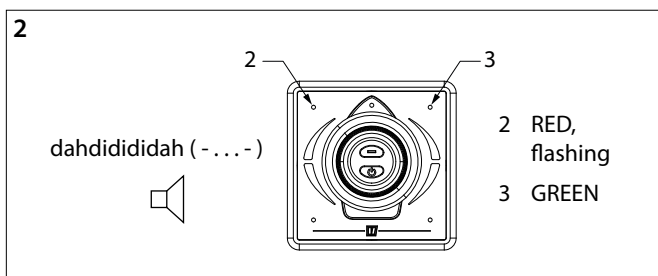
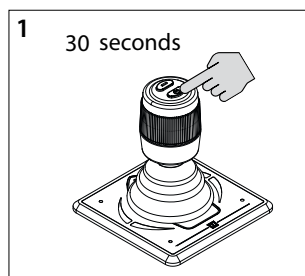
The direction of movement of the boat must match the direction of movement of the joystick. You must check this! Do this carefully and in a safe location.

- If the movement of the boat is opposite to the direction the joystick is moved in, this must be modified as indicated in 4.6.



4.5 Restore factory settings

Switch off all control panels (see 4.3) and perform the following actions on the control panel to restore the factory settings of the relevant panel:

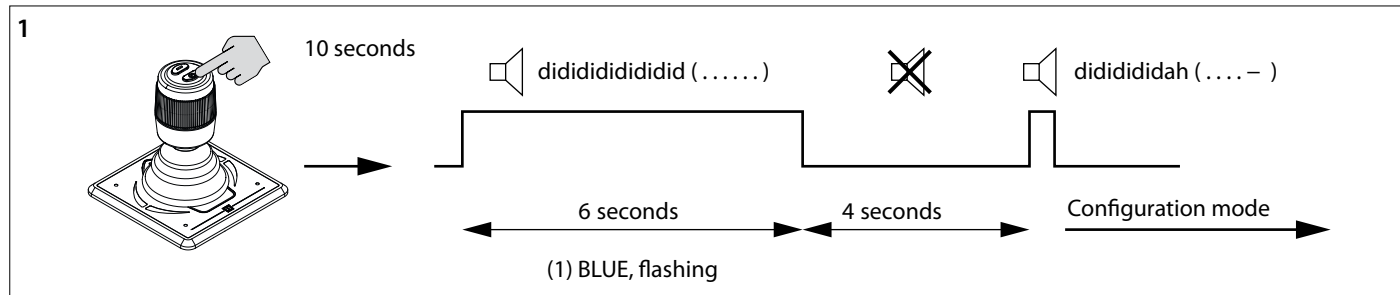
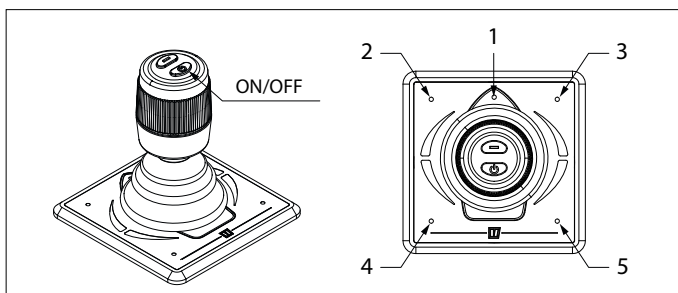
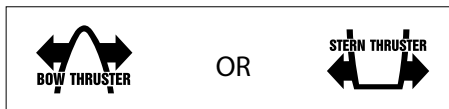


1. Press and hold the "ON / OFF" button for 30 seconds.
2. After 30 seconds LED (2) flashes red and LED (3) is green. You hear the signal, dah-di-di-di-dah (-...-). Now release the "ON / OFF" button.
3. Press the "ON / OFF" button once. All LEDs are off and you hear the signal, dah (-). The factory settings of this control panel have been restored.

4.6 Configuring thrust direction

Carry out the following actions on one panel in the order indicated:

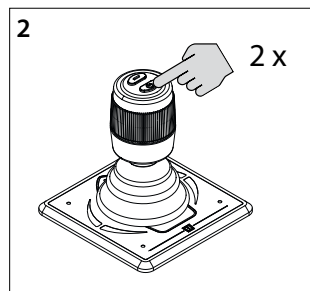
Switch off the panel, see 4.3, and wait 5 seconds before starting the configuration procedure below.



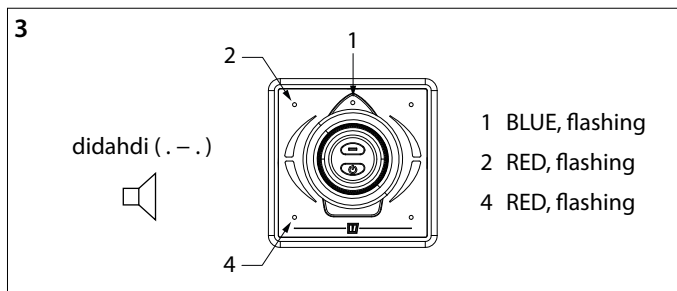
1 Place the panel in configuration mode

- Press and hold the "ON / OFF" button for 10 seconds.

During the first 6 seconds, LED (1) flashes blue and the buzzer will continuously signal a didididididid (. . .). Keep pressing the "ON / OFF" button. After 10 seconds the buzzer sounds the signal didididah (...-).



2. Press the On/Off button twice.



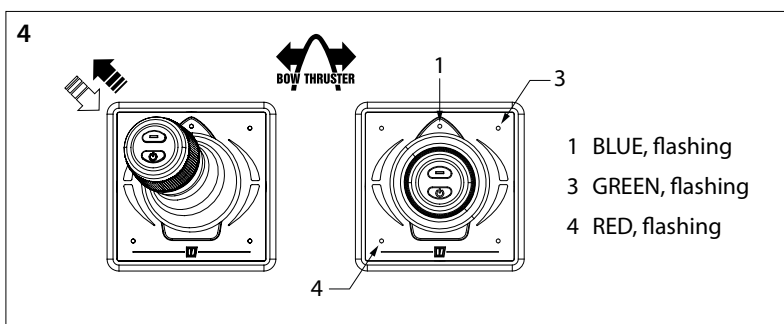
3. LEDs (1) (blue) (2) (red) and (4) (red) flash and you hear the signal, di-dah-di (. - .) Now the panel is in configuration mode.

IMPORTANT

If another combination of LEDs is lit, first restore the factory settings (see 4.5) and start checking the thrust direction again (see 4.4).

4. Configuring thrust direction for a bow thruster:

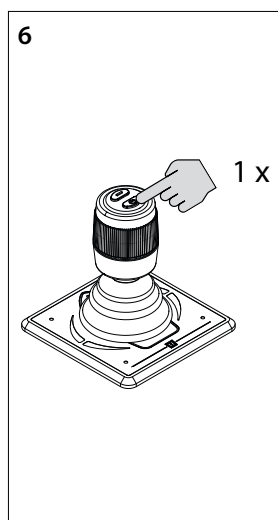
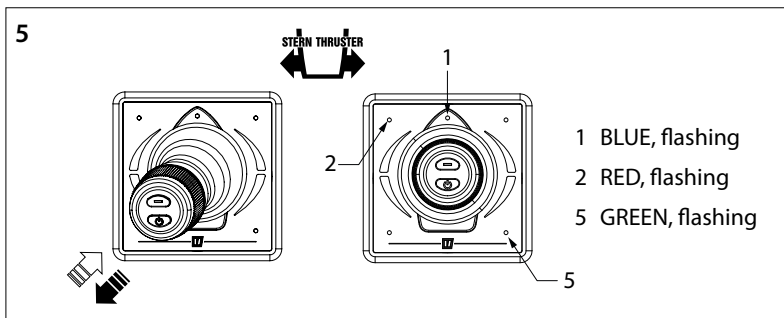
Move the joystick to the upper left corner and back until LEDs (1) (blue), (3) (green) and (4) (red) flash. Repeat if necessary.



OR

5. Configuring thrust direction for a stern thruster:

Move the joystick to the bottom left corner and back until LEDs (1) (blue), (2) (red) and (5) (green) flash. Repeat if necessary.



6. Press the "ON / OFF" button once to confirm the setting.

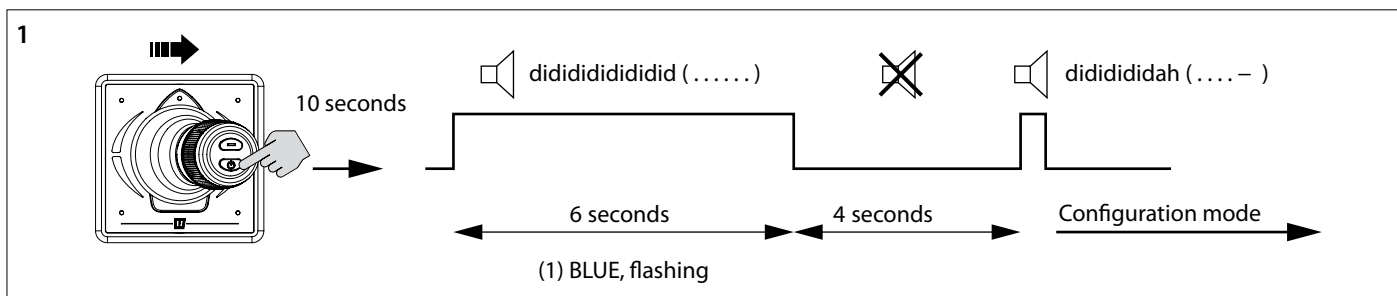
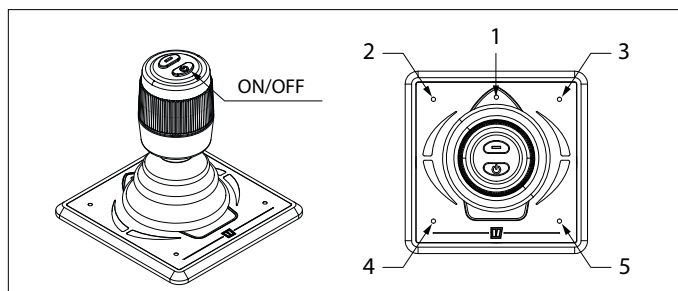
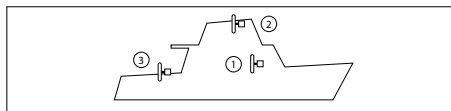
4.7 Configuration of multiple control panels

Carry out the following actions on EACH panel in the order indicated:

Switch off the panel, see 4.3, and wait 5 seconds before starting the configuration procedure below.

Set up multiple control panels

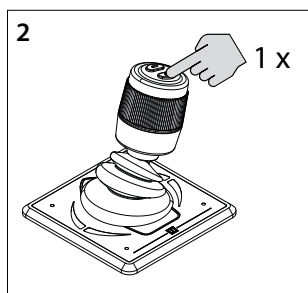
You can configure four control panels (Group code A, B, C or D). Use one group code per control panel.



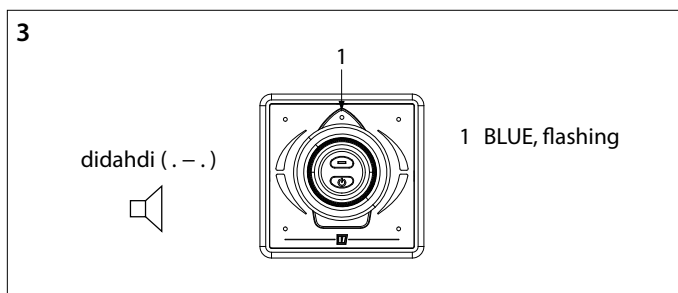
1. Place the panel in configuration mode

- Push the joystick to the right, press and hold the "ON / OFF" button for 10 seconds.

During the first 6 seconds, LED (1) flashes blue and the buzzer will continuously signal a dididididididid (. . .). Keep pressing the "ON / OFF" button. After 10 seconds the buzzer sounds the signal didididididah (. . . -).



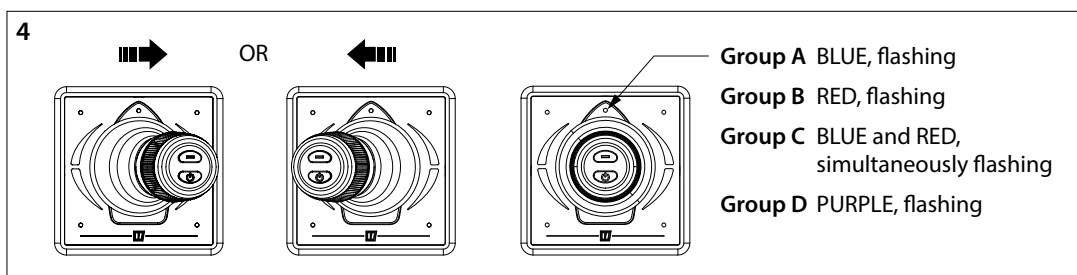
2. Press the On/Off button once.



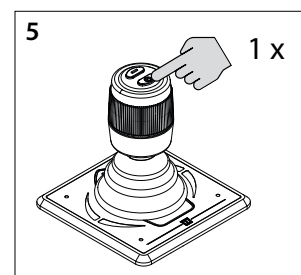
3. LED (1) flashes blue and you hear the signal, di-dah-di (. - .). Now the panel is in configuration mode.

IMPORTANT

If another combination of LEDs is lit, first restore the factory settings (see 4.5) and start checking the thrust direction again (see 4.4).



4. Move the joystick to the left or right to set the control panel group code. The color of the LED indicates the control panel group code.



5. Press the On/Off button once to confirm the setting.

4.8 Meaning LED indicator lights

BLUE LED	RED LED	BUZZER	LEFT LED Top	RIGHT LED Top	LEFT LED Bottom	RIGHT LED Bottom	
Blinks (for 6s)		(.) (for 6s)					Childlock after the first push
ON		1x (-.-)					Device is enabled, Bow and Stern thrusters are ready
Blinks double							Device is inactive, thruster is active
			ON		ON		Device enabled and joystick moved to left
				ON		ON	Device enabled and joystick moved to right
			ON				Device enabled and joystick moved to left (full forward)
				ON			Device enabled and joystick moved to right (full forward)
					ON		Device enabled and joystick moved to left (full reverse)
						ON	Device enabled and joystick moved to right (full reverse)
	Blinks fast	1x (-.-)	Blinks faster	Blinks faster			Bow Thruster is overheated
	OFF	1x (..)	OFF	OFF			Bow Thruster was overheated
	Blinks fast	1x (-.-)			Blinks faster	Blinks faster	Stern Thruster is overheated
	OFF	1x (..)			OFF	OFF	Stern Thruster was overheated
	Blinks	1x (-.-)	Blinks faster	Blinks faster			Bow Thruster is overloaded
	OFF	1x (..)	OFF	OFF			Bow Thruster was overloaded
	Blinks	1x (-.-)			Blinks faster	Blinks faster	Stern Thruster is overloaded
	OFF	1x (..)			OFF	OFF	Stern Thruster was overloaded
	Blinks double	1x (-.-)	Blinks faster	Blinks faster			Bow Thruster is limiting
	OFF	1x (..)	OFF	OFF			Bow Thruster was limiting
	Blinks double	1x (-.-)			Blinks faster	Blinks faster	Stern Thruster is limiting
	OFF	1x (..)			OFF	OFF	Stern Thruster was limiting
Blinks fast	Blinks	1x (-.-)	Blinks faster	Blinks faster			Bow Thruster supply is low
Blinks fast	Blinks	1x (-.-)			Blinks faster	Blinks faster	Stern Thruster supply is low
			Blinks fast			Blinks fast	Panel supply is low
			Blinks double	Blinks double	Blinks double	Blinks double	Joystick is broken
		1x (.)					Joystick button is pushed
	ON						Disconnected from the network