

# SONAR Phone™



**Sonar has gone mobile.**



*As an introductory bonus,  
every SonarPhone model  
includes an armband to hold  
your phone while fishing.*



# SONAR Phone™



## WiFi sonar for your smartphone or tablet.



Demo the FREE SONARPHONE app on your smartphone or tablet. Get it now from Google Play or the Apple Store, keyword **sonarphone**

### Key Features

- ▶ Water temperature
- ▶ Automatic range
- ▶ Zoom bottom track
- ▶ Shallow water alarm
- ▶ Fish alarm
- ▶ Low battery alarm
- ▶ Water activated
- ▶ Surface clarity
- ▶ Noise rejection
- ▶ Keel offset
- ▶ Wifi signal range 300 feet
- ▶ Supports multiple receivers
- ▶ Freshwater/saltwater
- ▶ No cellular service needed
- ▶ App-integrated digital owner's manual
- ▶ One year warranty



The SonarPhone app connects via WiFi to any of the three SonarPhone hardware models.

**T•POD**

CAST IT - TROLL IT



SP100

**T•BOX**

PERMANENT BOAT  
INSTALLATION



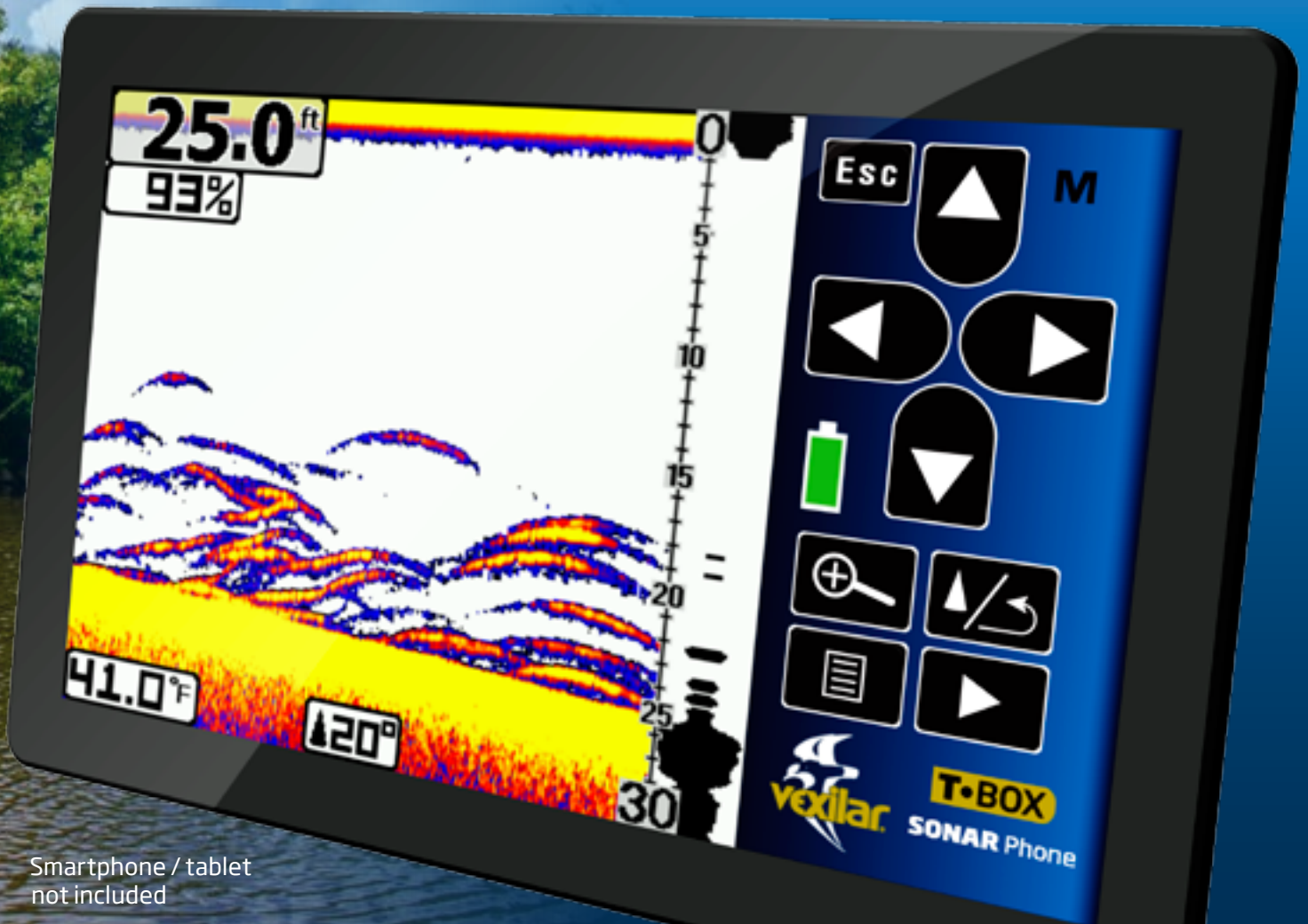
SP200

**T•BOX**

PORTABLE BOAT  
INSTALLATION



SP300



Smartphone / tablet  
not included



Model	SP100	SP200	SP300
	<b>T•POD</b> Wi-Fi Transducer Pod	<b>T•BOX</b> Wi-Fi Boat Sonar	
Usage	Impact resistant chassis. Cast it or troll it. Weighs 4 oz.	Permanent boat installation	Portable boat installation w/ suction cup transducer bracket
Transducer	Water activated transmitter	High-speed skimmer-style transducer w/20 ft of cable	
Max depth range	120 feet	240 feet	
Sonar frequency	125 kHz Single Beam 30°	200/83 kHz Dual Beam 20°/40°	
Power source	3.7V rechargeable lithium ion battery. USB port charging system @ 5V/600mA.	12V DC power	Rigid carry case holds 12V, 4.5 amp-hour battery. Charger included.
Battery runtime	4 hours per charge	n/a	15 hours per charge
Power output	400 watts peak-to-peak	800 watts peak-to-peak	
Transmit speed	100 Mbps	100 Mbps	
Screen controls	Touch screen, split screen display with touch screen zoom control		



vexilar.com

Easy to use and install.  
Test drive the FREE  
SonarPhone App today.

Start-up as easy as 1, 2, 3, fish!

1. Turn WiFi SonarPhone transmitter on
2. In your phone's WiFi settings, select the Sonarphone WiFi channel and enter WiFi Password 12345678
3. Enter app, select Master and enter master password 12345678

Go fishing!



4.3



2.0

To install the free SonarPhone app on your phone or tablet, launch the App Store (iOS) or Play Store (Android) and search for "sonarphone."

*If you are using an iPad, look for SonarPhone under iPhone Apps.*



Also from Vexilar, the **FISHPHONE** WiFi Underwater camera system. Learn more at Vexilar.com

Vexilar, Inc. • 6667 West Old Shakopee Road, Suite 101, Minneapolis, MN 55438  
952-884-5291 • www.vexilar.com